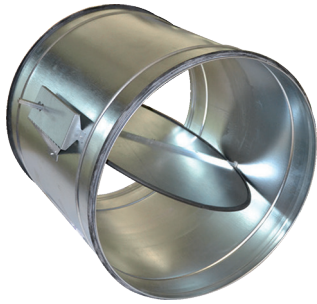


SRCT

Circular shut-off damper airtight



Product

SRCT

Construction

Galvanized steel casing
Galvanized steel blade with airtight gasket

Actuation

Prepared for manual control or actuator

SPECIFICATION

Certified circular airtight shut-off damper class 4 according to EN 1751.

Self-generated noise tests according to UNI EN 25135

and ISO 23741.

Leakage test according to EN 1751 DIN 1946/4

MOUNTING

Push-in with sealing gaskets

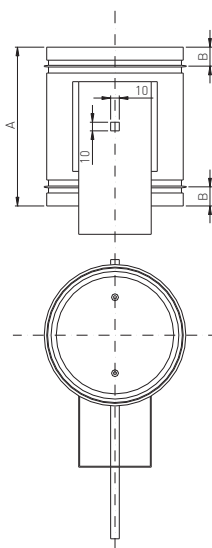
ACCESSORIES

Manual control.

Actuator 24V or 230V

DIMENSIONAL

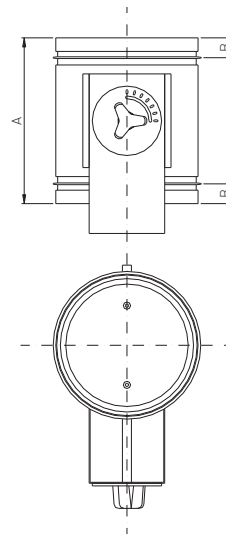
Ø d mm	A mm	B mm	H mm	Casing mm	Blade mm
100	200	21	70	8/10	8/10
125	200	21	70	8/10	8/10
160	200	21	75	8/10	8/10
200	200	21	75	8/10	8/10
250	200	21	75	8/10	8/10
315	200	21	75	8/10	10/10
400	255	25	80	10/10	15/10
500	255	25	80	10/10	15/10
630	255	25	80	10/10	15/10



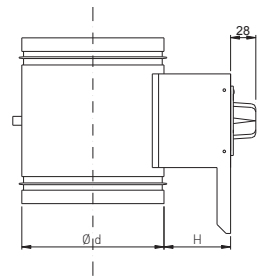
MOTORIZED



ACTUATOR



WITH MANUAL CONTROL



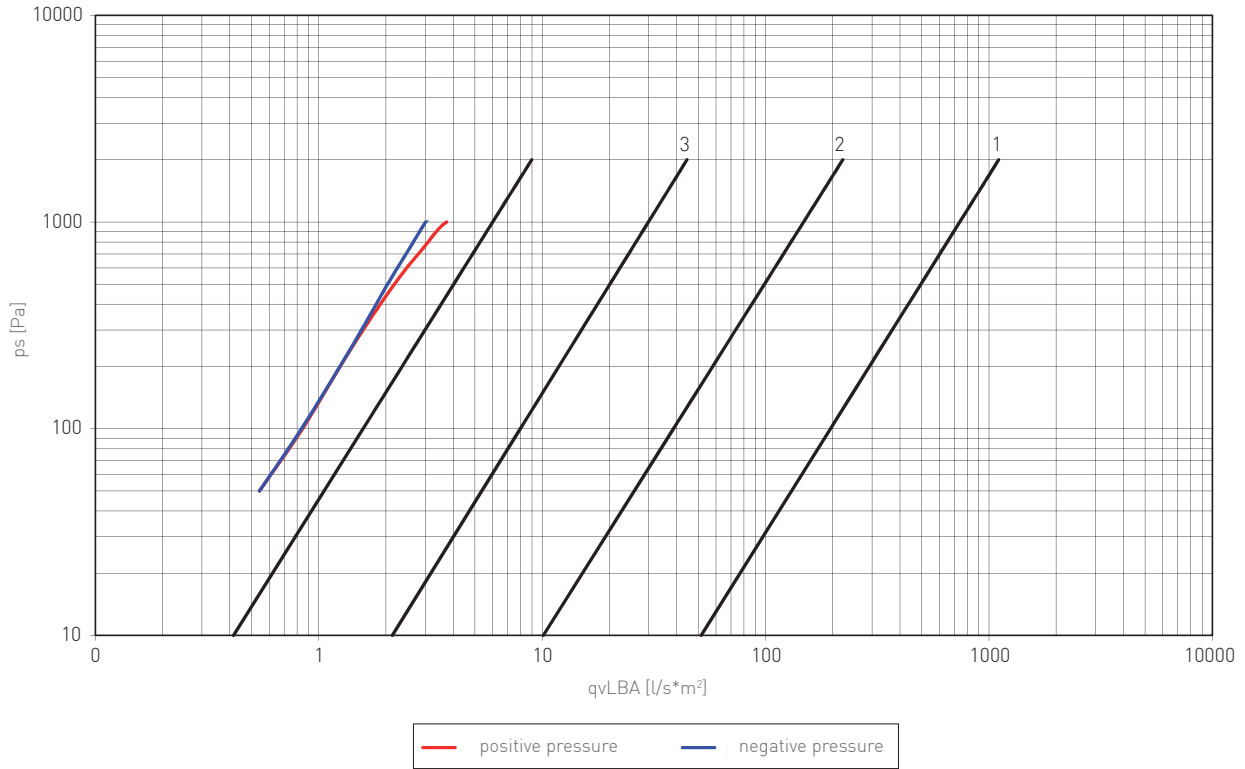
CM-10T
MANUAL CONTROL



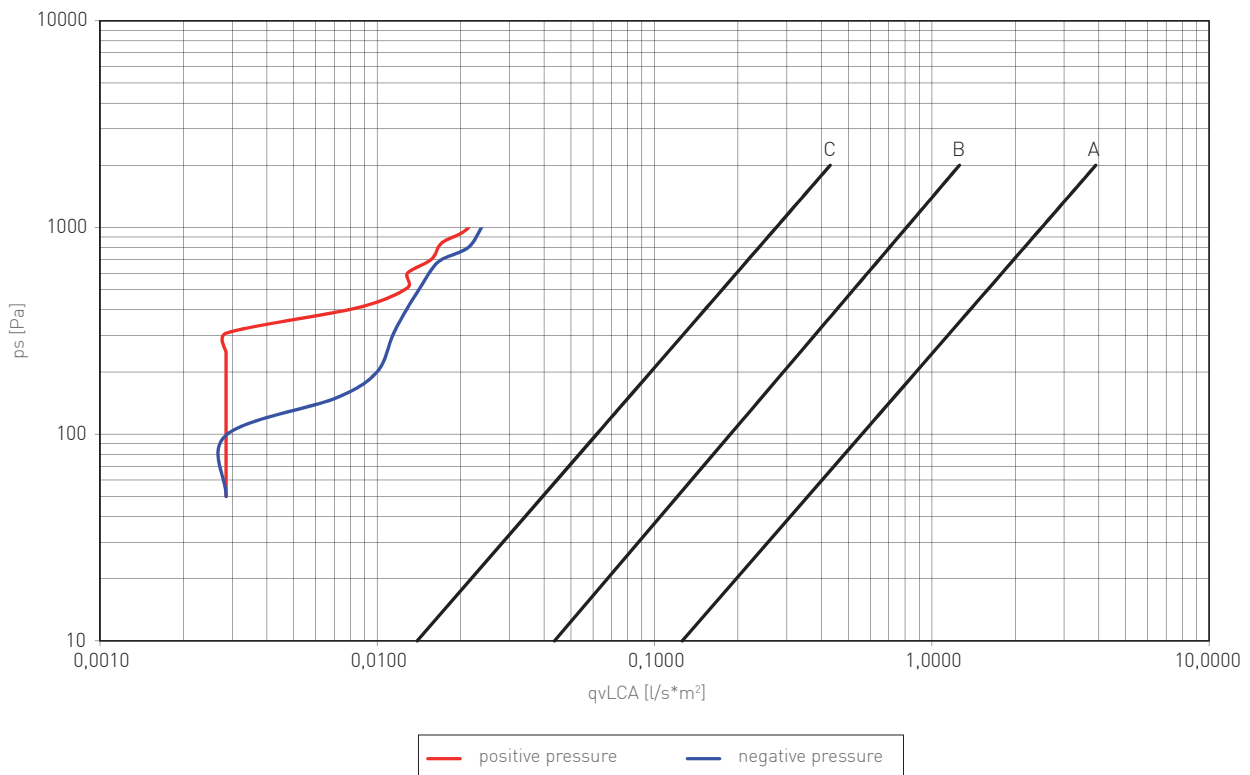
Diffusion

Components
for perfect air
distribution in HVAC
systems

BLADE AIR TIGHTNESS



FRAME AIR TIGHTNESS



SRCT

Circular airtight shut-off damper

SELECTION TABLE

SRCT Model	A _k m ²	v [m/s]		Q [m ³ /h]		Dp [α=40°] [Pa]		L _{WA} [α=40°] [dB(A)]	
		min	max	min	max	min	max	min	max
100	0,0079	3	6	80	170	51	205	42	58
125	0,0123	3	6	130	270	51	205	43	58
160	0,0201	3	6	220	430	51	205	44	58
200	0,0314	3	6	340	680	51	205	45	61
250	0,0491	3	6	530	1060	51	205	46	61
315	0,0779	3	6	840	1680	51	205	47	61
355	0,0990	3	6	1070	2140	51	205	47	61
400	0,1257	3	6	1360	2710	51	205	48	62
450	0,1590	3	6	1720	3440	51	205	48	62
500	0,1963	3	6	2120	4240	51	205	49	62
630	0,3117	3	6	3370	6730	51	205	50	63

QUICK SELECTION CHART

