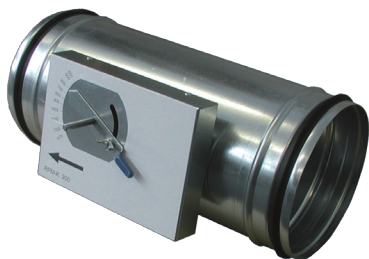


RPMKR

Circular constant flow rate regulator



Product

RPMKR

Construction

Body and finish in galvanized steel
Thickness acc. EN 1751 Tightness Class C

Actuation

Manual mechanical operation

SPECIFICATION

Constant flow rate regulator.
Nominal size DN 80 ÷ DN 400.
Length L = 450 mm.
Flow rate 50 ÷ 4500 m³/h.
Precision ±15-20% for velocities below
4m/s, ±10% for higher velocities

APPLICATIONS

Maintains constant flow rate within a
differential pressure range

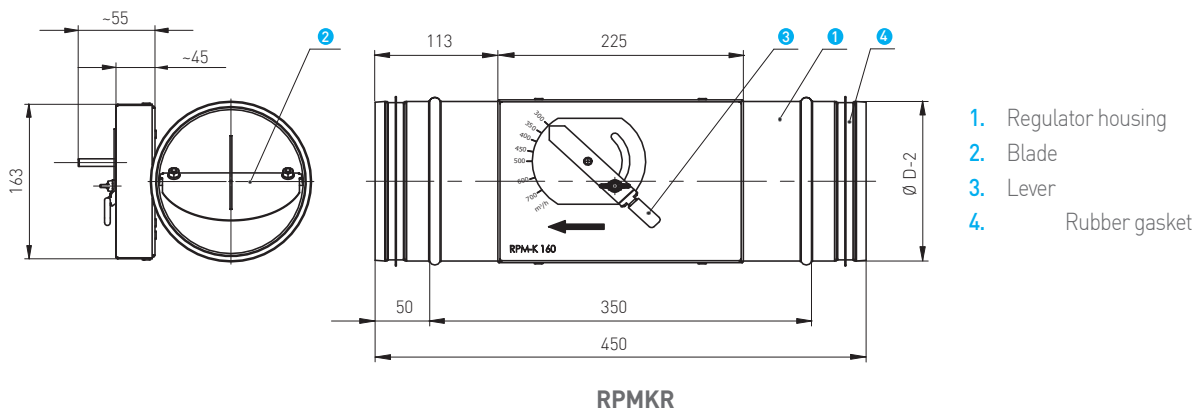
WORKING CONDITIONS

Correct regulator operation is ensured
under the following conditions:

- Maximum airflow velocity 10 m/s
- Maximum duct pressure 1000 Pa.

Operating limits -20° / 70°C

DRAWINGS



AIR FLOW RATE VALUES

Dimension	Min. air flow rate m ³ /h ⁻¹	Max. air flow rate m ³ /h ⁻¹
80	50	200
100	80	300
125	125	500
160	200	900
200	300	1300
250	500	2000
315	850	2800
400	1200	4500



Diffusion

Components
for perfect air
distribution in HVAC
systems

PARAMETERS

Dimensions	Air flow rate m ³ /h	Maximum precision %	Min. pressure difference Pa	Dimensions	Air flow rate m ³ /h	Maximum precision %	Min. pressure difference Pa
80	50	20	100	200	300	18	50
	100	15	100		500	15	60
	150	10	100		900	10	70
	200	10	120		1300	10	80
100	80	18	50	250	500	15	50
	150	15	60		800	12	70
	250	10	80		1200	10	80
	300	10	90		2000	10	90
125	125	18	50	315	800	15	50
	200	15	60		1200	10	70
	350	10	70		2000	10	80
	500	10	90		2800	10	90
160	200	18	50	400	1200	15	50
	400	15	70		2000	10	70
	700	10	80		3000	10	80
	900	10	90		4500	10	90