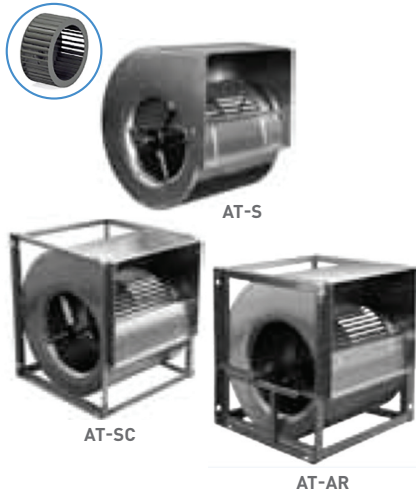


AT-S/AT-SC/AT-AR

Double inlet centrifugal fans
belt-driven



Product

AT

Construction

Housing in galvanized steel sheet.

Fan wheel with forward curved blades in galvanized steel sheet.

Bearings supported with rubber dampers

Application

Civil and industrial applications

FAN

Centrifugal fan with forward curved blades, double inlet for belt-driven version, made of galvanized steel.

VERSIONS

AT-S: Light-duty version. Maintenance-free bearings

AT-SC: Reinforced version with rectangular steel frames welded at the ends.

Maintenance-free bearings AT-AR:

Reinforced heavy-duty version with rectangular steel frames welded at the ends.

Pillow block bearings, lubricated, for medium-heavy duty use.

FINISH

Galvanized steel.

APPLICATIONS



TECHNICAL
ROOMS



LARGE SPACES



HOSPITALS



CANTEENS



RESTAURANTS



FAST FOOD

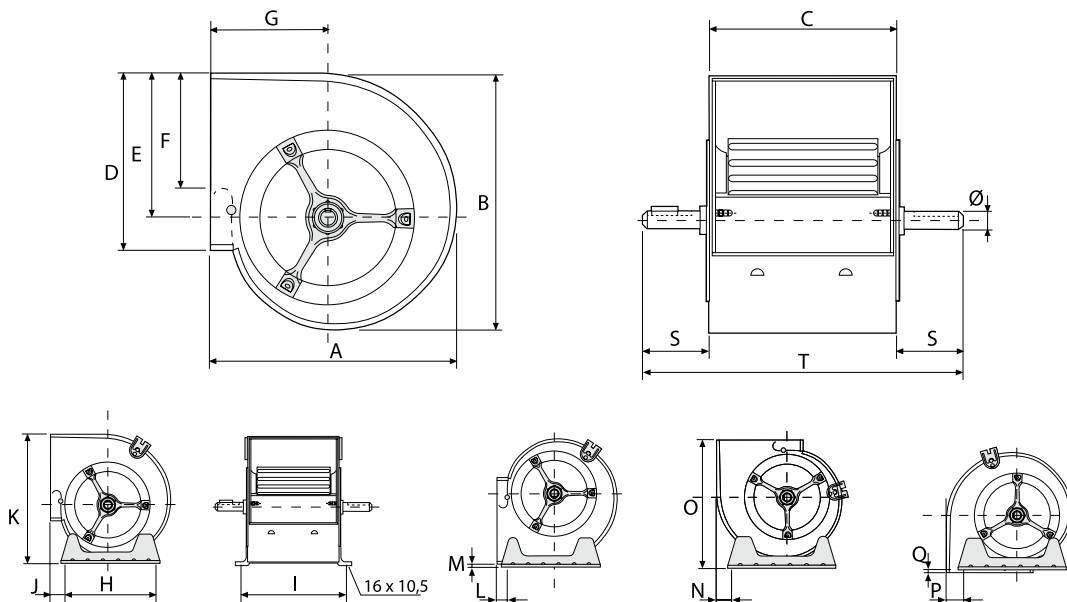


OFFICES



TECHNICAL CHARACTERISTICS AND DIMENSIONS

Model	Equivalence (mm)	Maximum recommended speed (r.p.m.)	Maximum flow rate (m3/h)	Wt. (kg)
ATS-7/7	180/180	2400	2800	5
ATS-9/9	240/240	2100	7000	9
ATS-10/10	270/270	1900	7900	11
ATS-12/12	320/320	1500	10000	16
ATS-15/15	380/380	1200	16000	23
ATS-18/18	460/460	950	22000	33



Model	A	B	C	D	E	F	G	H	I	J	K	L	M	N	O	P	Q	S	T	Ø
ATS-7/7	307	327	232	207	187	148	146	227	259	20,6	329,3	17,5	4,5	32	309,5	14,5	4,7	49	330	20
ATS-9/9	380	392	300	260	218	180	184	296	327	68,5	395,5	68,5	39	34,5	382	34,5	6	60	420	20
ATS-10/10	422	441	333	289	247	213	201	339	360	67	450,5	67	40	39	427	39	8	63,5	460	20
ATS-12/12	493	524	396	341	293	240	229	407	423	69,5	528	69,5	38,4	40,5	496,4	41,4	4,5	70	536	25
ATS-15/15	573	613	473	403	343	270	267	494	499,5	62,5	625	68,5	37	44,5	575	48,5	8	71	615	25
ATS-18/18	685	743	556	479	418	290	314	608	585	44,2	751	52,5	44	91,4	689,4	91,4	4,6	68	692	25

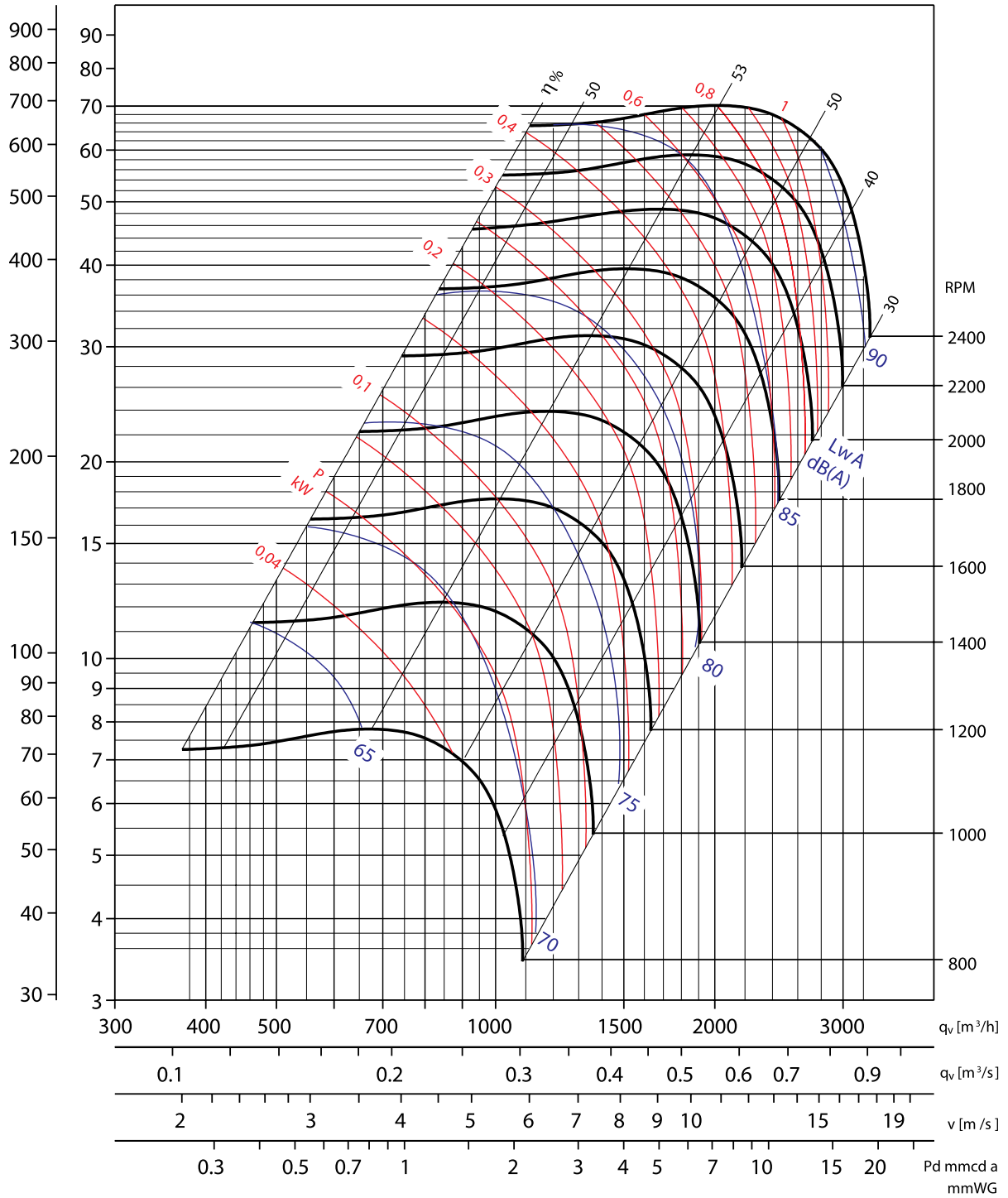
AT-S/AT-SC/AT-AR

Double inlet centrifugal fans belt-driven

CHARACTERISTIC CURVES

CHARACTERISTIC CURVES 7/7

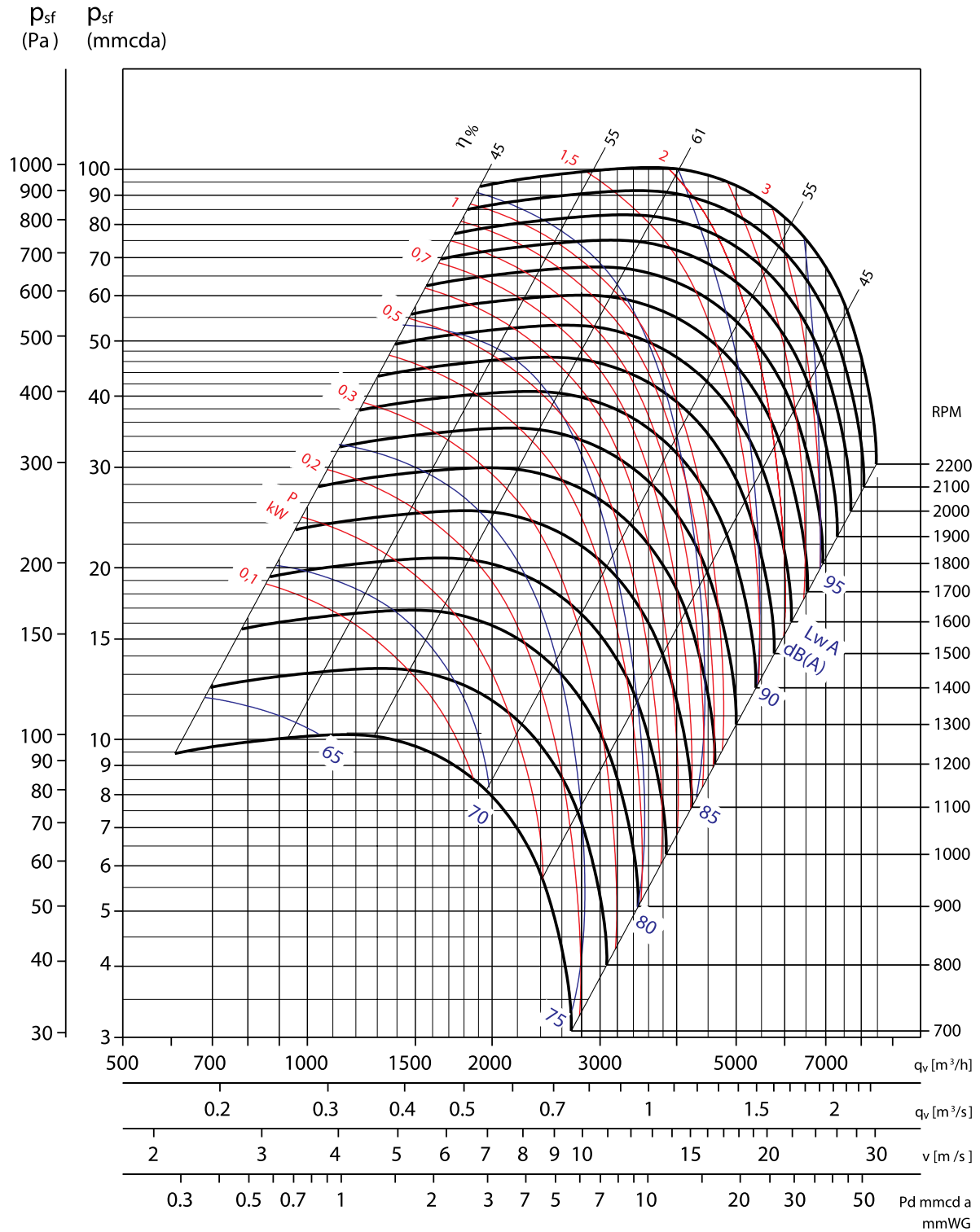
p_{sf} (Pa) p_{sf} (mmcda)



Hz	63	125	250	500	1000	2000	4000	8000
Δ dB	22	20	12	9	4.5	6.5	10	19



CHARACTERISTIC CURVES 9/9



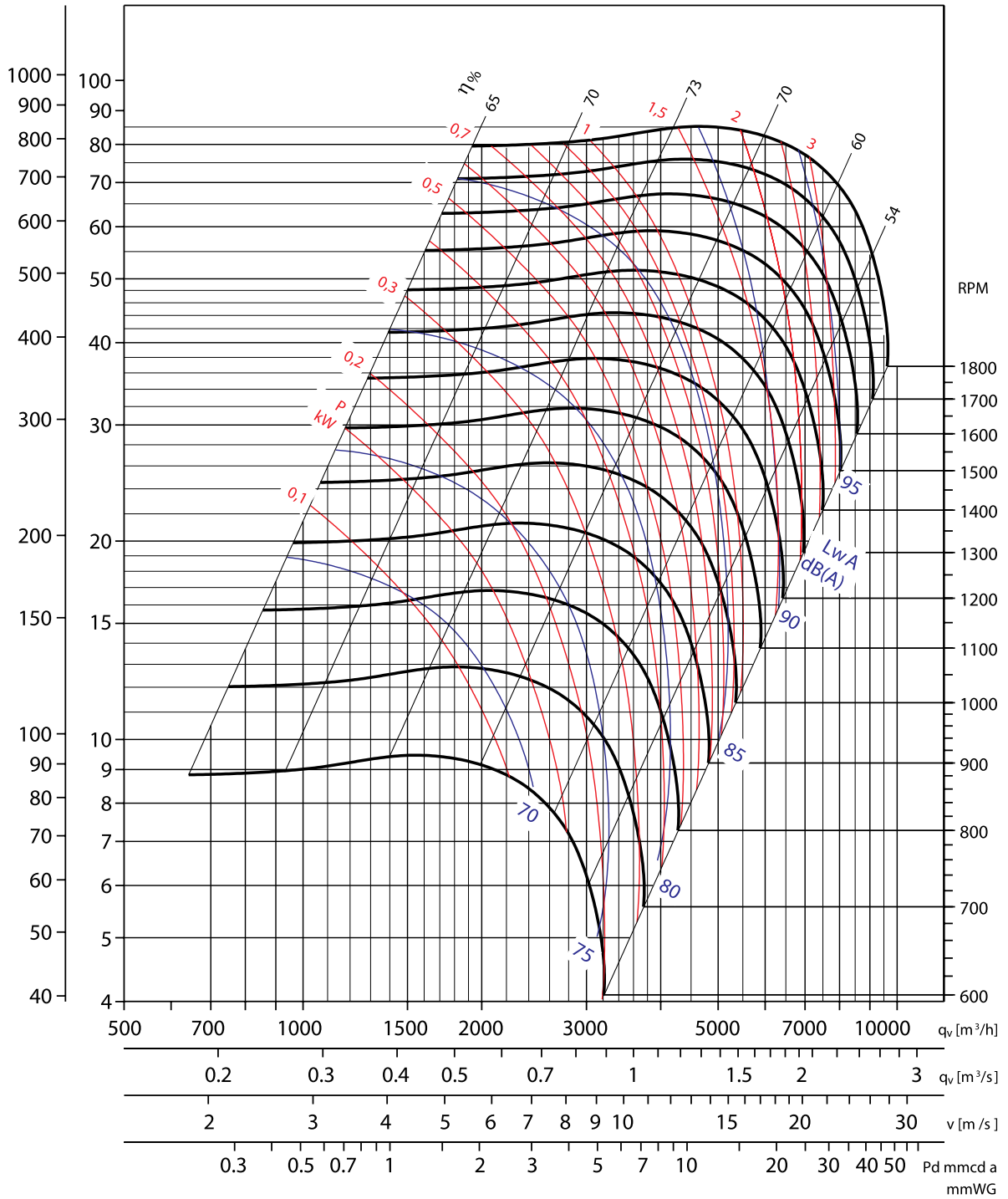
Hz	63	125	250	500	1000	2000	4000	8000
Δ dB	25	21	12	10	4.1	5.5	9	16

AT-S/AT-SC/AT-AR

Double inlet centrifugal fans belt-driven

CHARACTERISTIC CURVES 10/10

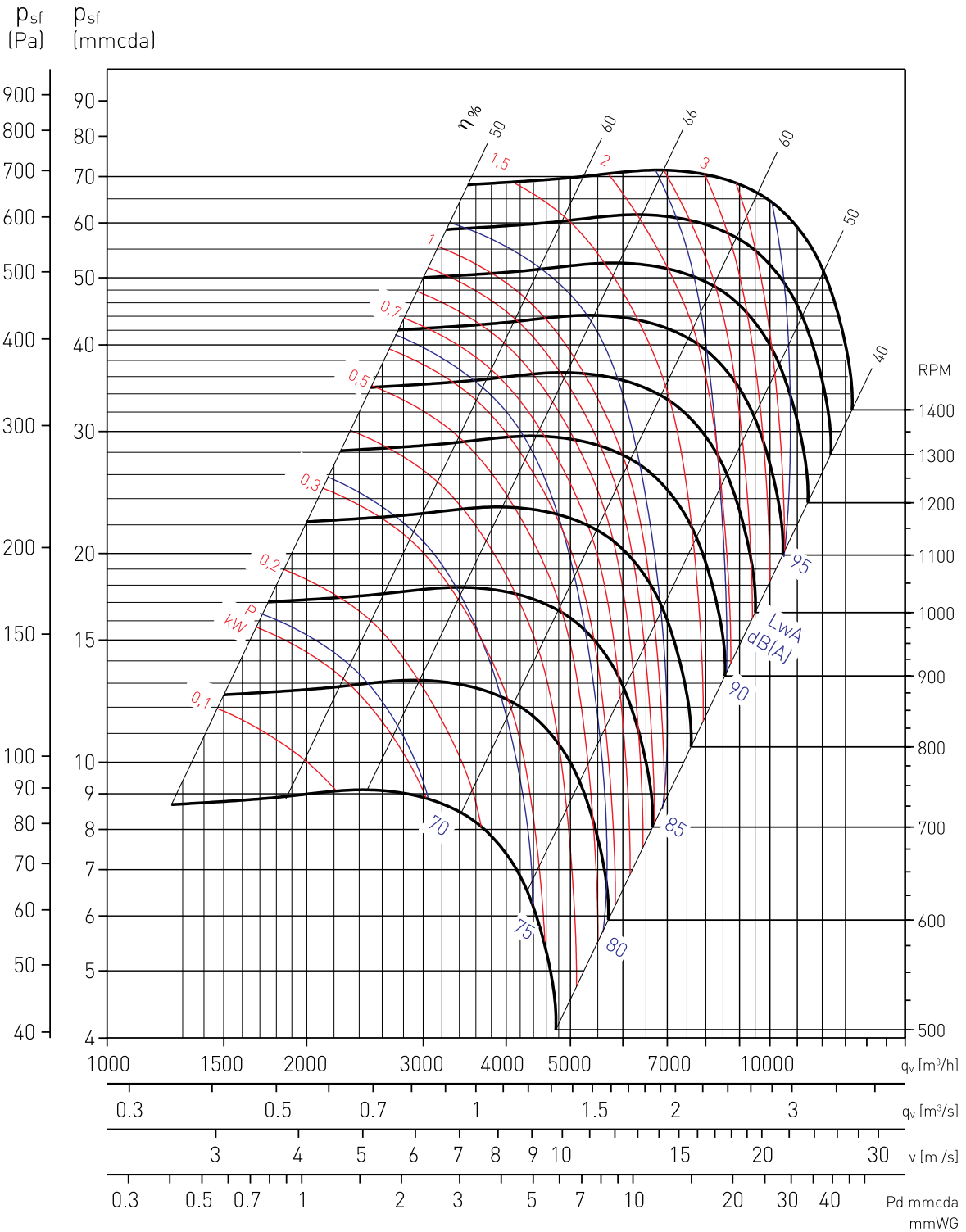
p_{sf} (Pa) p_{sf} (mmcda)



Hz	63	125	250	500	1000	2000	4000	8000
Δ dB	31	21	14	9	3.6	6.2	9	17



CHARACTERISTIC CURVES 12/12

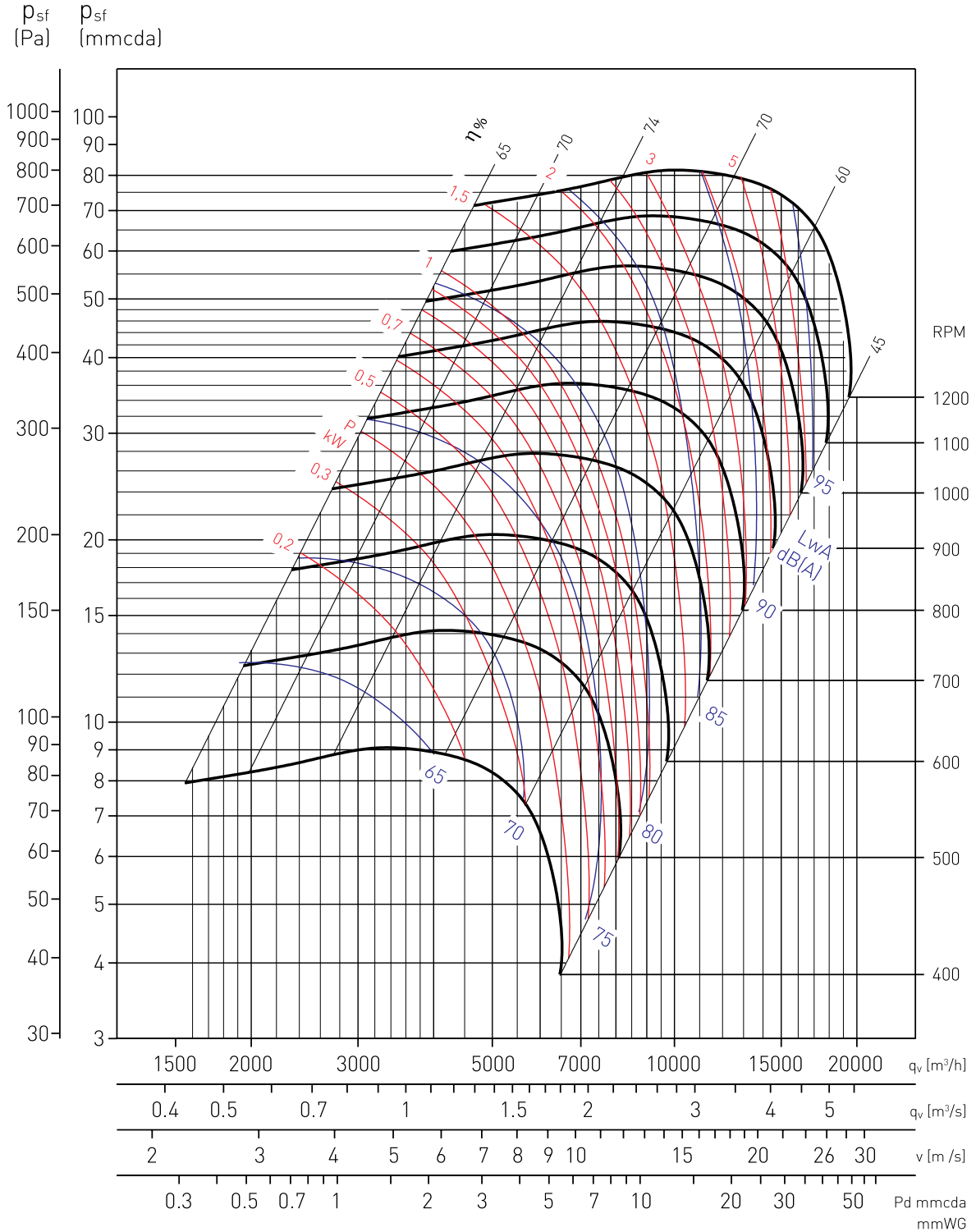


Hz	63	125	250	500	1000	2000	4000	8000
Δ dB	30	21	15	8	3.8	5.7	10	19

AT-S/AT-SC/AT-AR

Double inlet centrifugal fans belt-driven

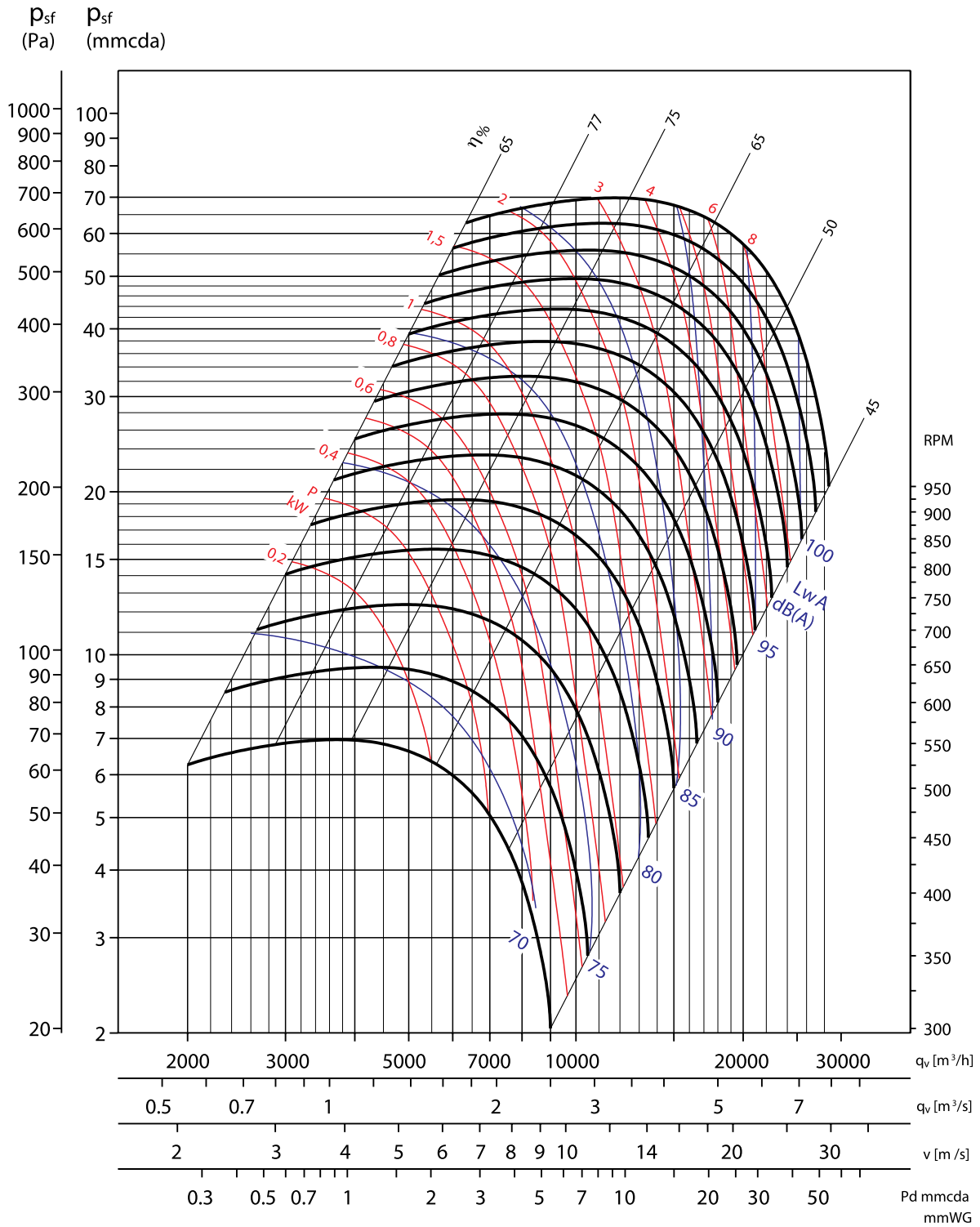
CHARACTERISTIC CURVES 15/15



Hz	63	125	250	500	1000	2000	4000	8000
Δ dB	24.6	15.1	14.2	8.2	4.8	5.8	9.6	15.5



CHARACTERISTIC CURVES 18/18



Hz	63	125	250	500	1000	2000	4000	8000
Δ dB	24	17	13	5	4.9	7	10	20