

# CBD

## Forward curved blade double inlet centrifugal fan directly coupled



### Product

CBD

### Application

Civil and industrial applications

### Construction

Forward curved blade impeller in steel sheet, galvanized steel casing complete with feet and anti-vibration mounts

### FAN

Centrifugal fan with forward curved blades, double inlet with direct drive motor, made of galvanized steel. Flow rate up to 7750 m<sup>3</sup>/h and pressure up to 500 Pa. Fan blade dynamically balanced according to ISO-1940.

### MOTOR

Enclosed motor with class F ball bearings, in single-phase 230V 50 Hz or three-phase 400 V version 50 Hz, available with 4 or 6 poles. Working temperature range [-20 ÷ +40] °C.

### ACCESSORIES

ON/OFF Switch.  
Electronic phase-cut speed controller for single-phase versions, inverter for three-phase versions.

## APPLICATIONS



CIVIL VENTILATION



TECHNICAL ROOMS



OFFICES



PUBLIC SERVICES

## TECHNICAL FEATURES - OPERATING RANGE

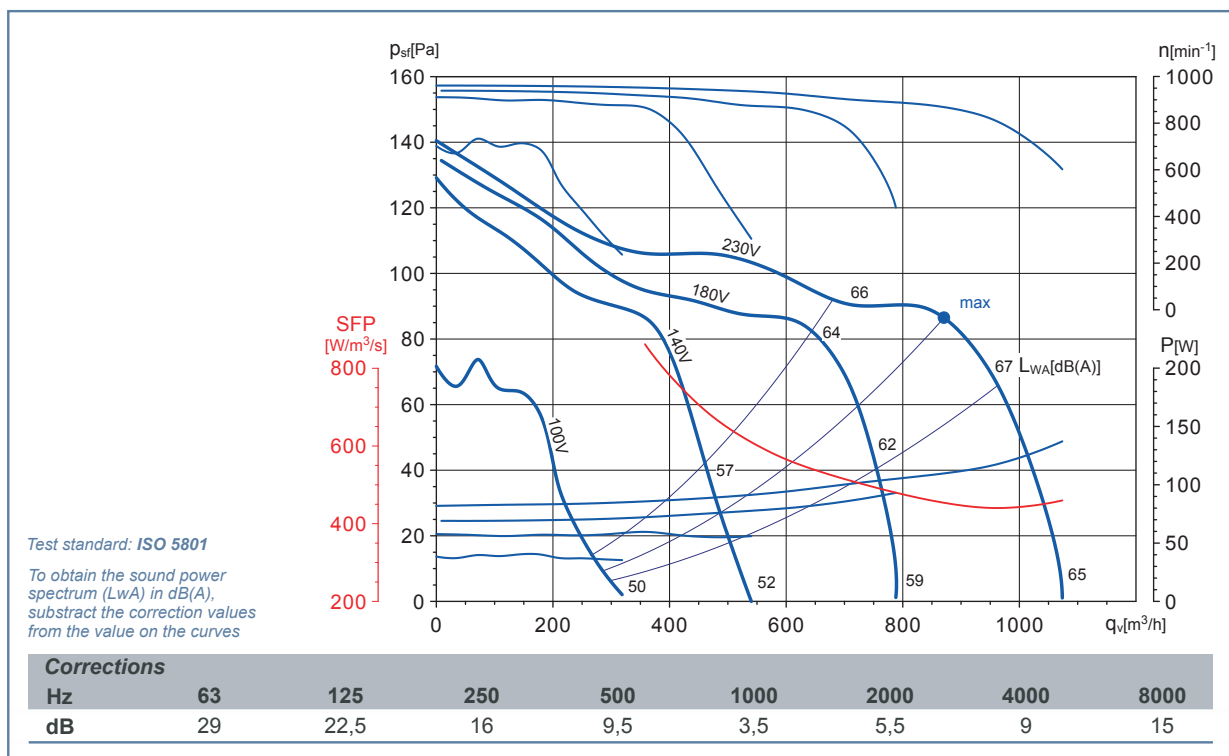
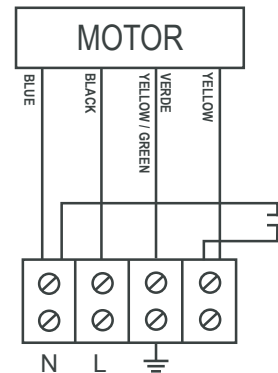
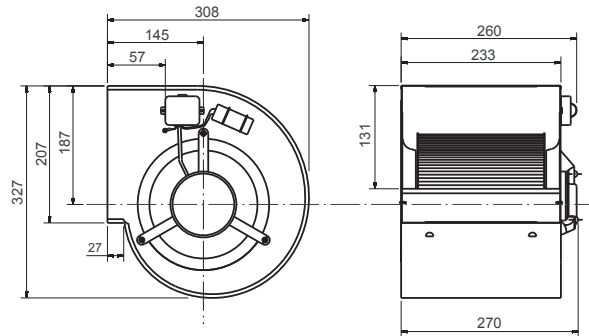
Operating range	Max flow rate (m <sup>3</sup> /h)	From 250 to 7,700
	Pressure (Pa)	From 30 to 450
Min. outlet	mm	230x208
Max. outlet	mm	473x404
Motor	Volt (±10%/ph/Hz)	230V/1ph/50 Hz - 400V/3ph/50Hz
	Poles	4-6
Fluid temp min. limit	°C	-20
Fluid max. temp limit	°C	+40



## CHARACTERISTIC CURVES AND DIMENSIONS

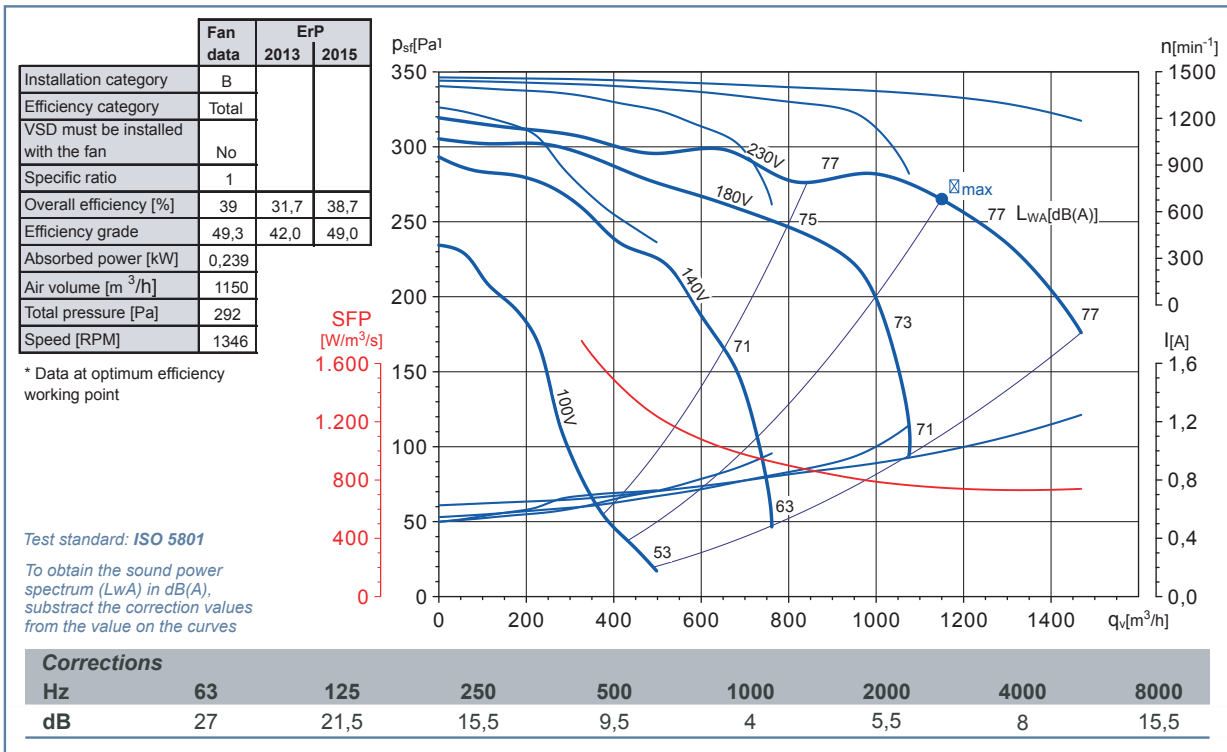
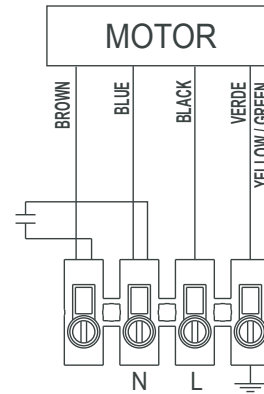
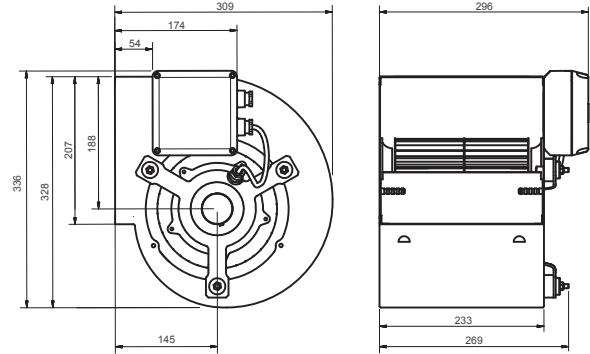
### 7/7 0.07 KW 6 POLI M

Voltage	Single-phase 230V 50Hz
Motor type	1V IP44 cl.F
Speed	6 poles
Motor power	72W
Maximum absorption	0,6 A
Capacitor	3 mF/450V
Air temperature	-20°C < T < +50°C
Wt.	6.7 kg



## 7/7 0.15 KW 4 POLI M

Voltage	Single-phase 230V 50Hz
Motor type	1V IP44 cLF
Speed	4 poles
Motor power	147W
Maximum absorption	1.2 A
Capacitor	7 mF/450V
Air temperature	-20°C < T < +40°C
Wt.	6.9 kg



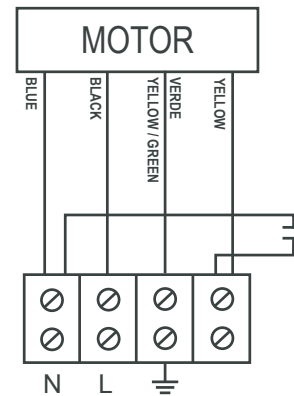
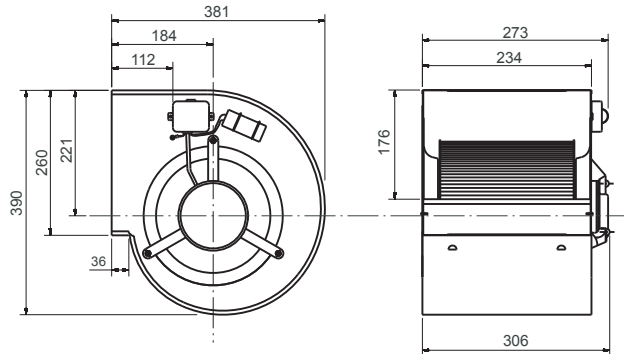


# Ventilation

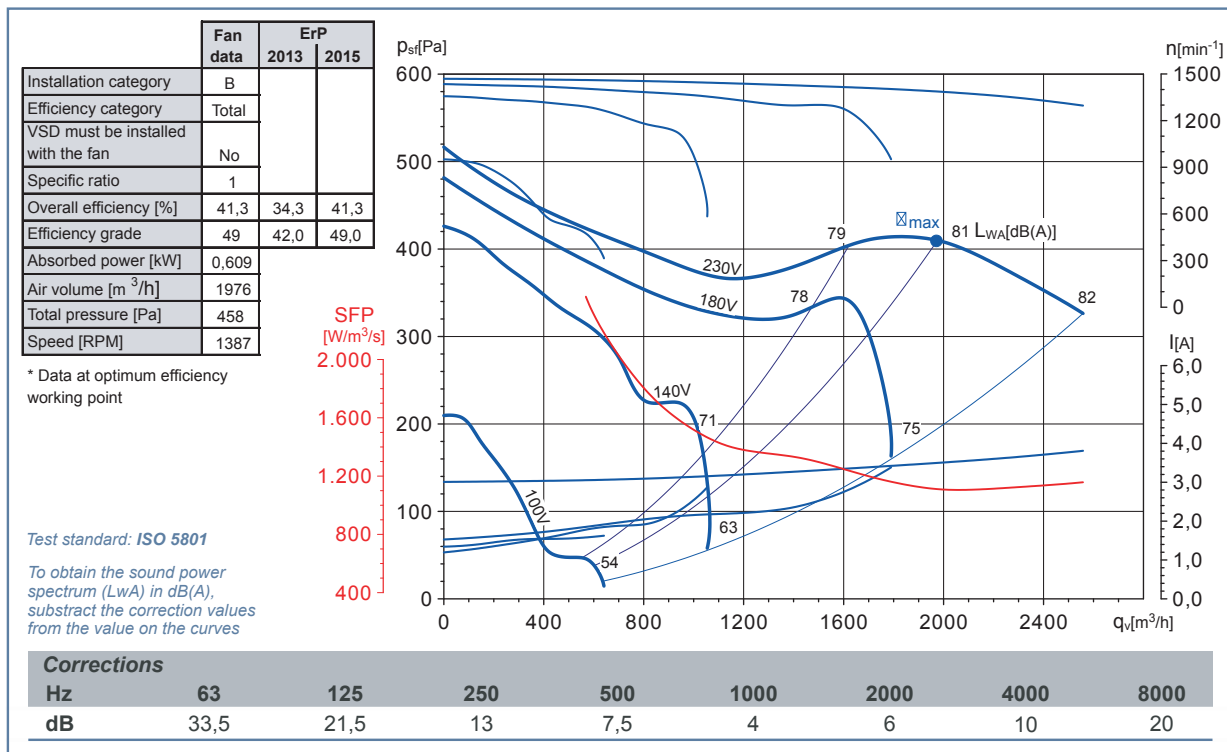
Comfort and performance  
at maximum efficiency  
energy

## 9/7 0.37 KW 4 POLI M

Voltage	Single-phase 230V 50Hz
Motor type	1V IP44 cl.F
Speed	4 poles
Motor power	373W
Maximum absorption	3,8 A
Capacitor	10 mF/450V
Air temperature	-20°C < T < +40°C
Wt.	11,3 kg



CENTRIFUGAL FANS

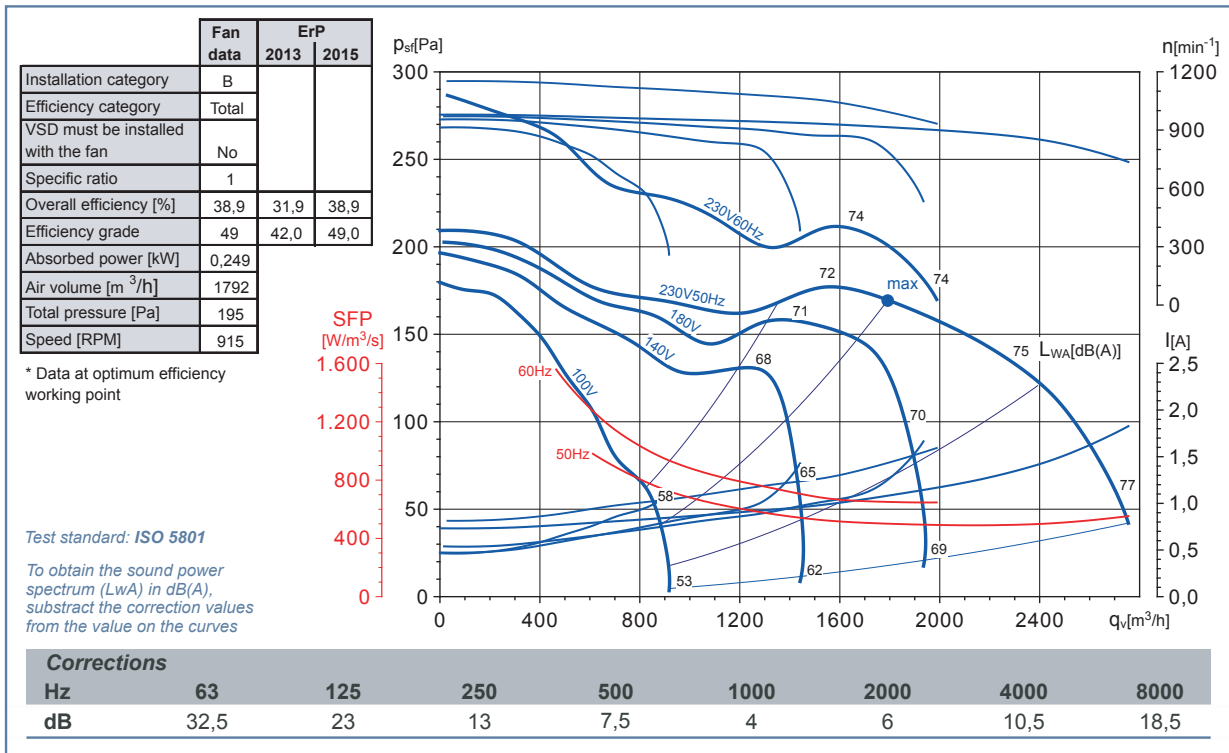
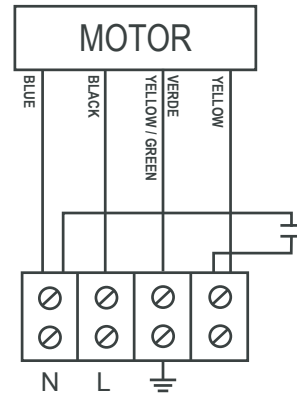
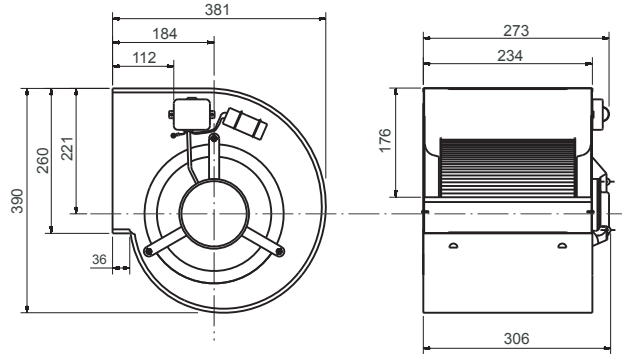


# CBD

Forward curved blade double inlet centrifugal fan directly coupled

## 9/9 0.20 KW 6 POLI M

Voltage	1 ~ 230V 50/60Hz
Motor type	1V IP55 cLF
Speed	6 poles
Motor power	200W
Maximum absorption	1,8 A
Capacitor	5 mF/450V
Air temperature	-20°C < T < +40°C
Wt.	14,0 kg



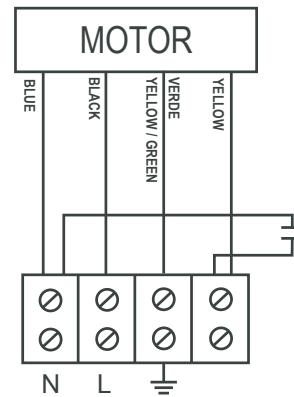
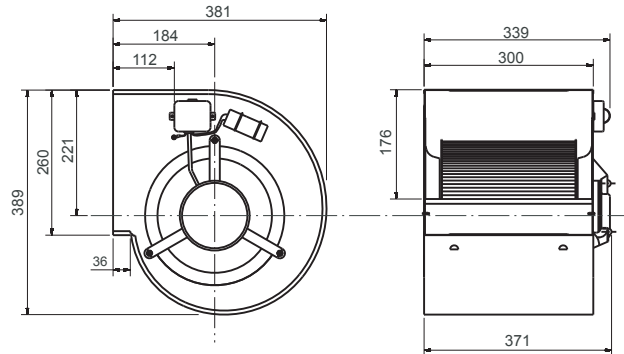


# Ventilation

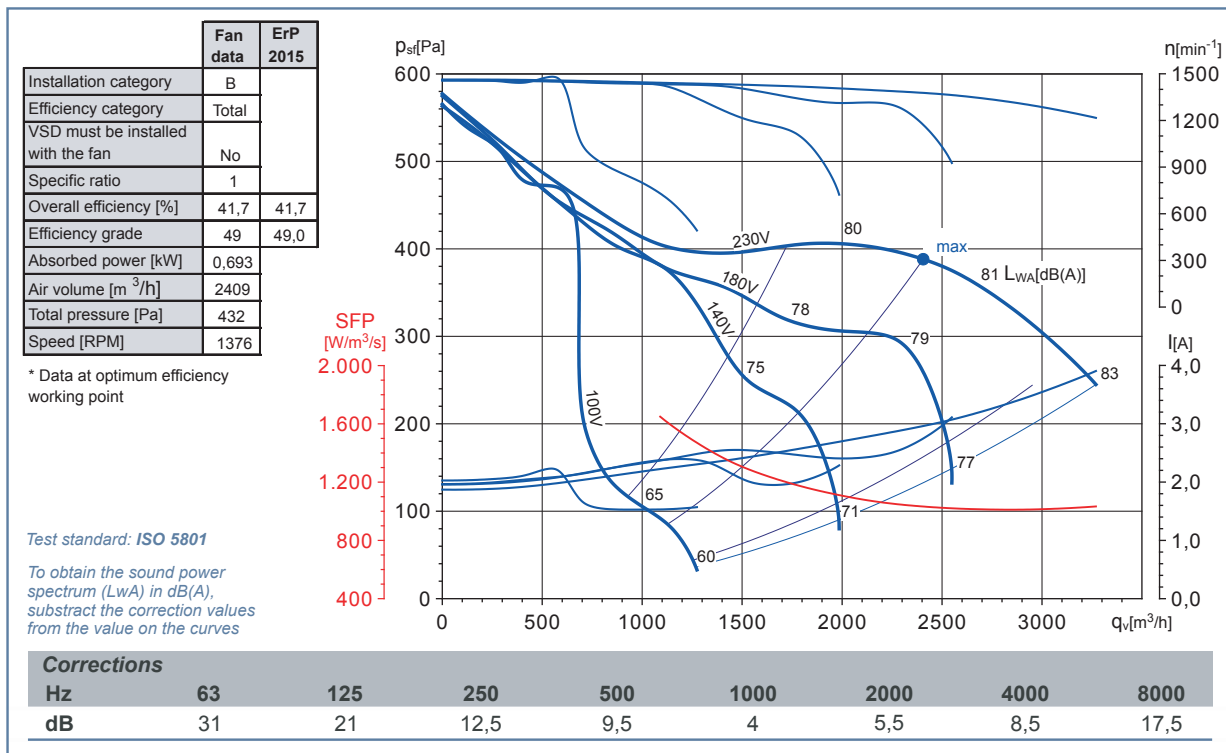
Comfort and performance  
at maximum efficiency  
energy

## 9/9 0.55 KW 4 POLI M

Voltage	Single-phase 230V 50Hz
Motor type	1V IP44 cl.F
Speed	4 poles
Motor power	550W
Maximum absorption	3,9 A
Capacitor	25 mF/450V
Air temperature	-20°C < T < +40°C
Wt.	14,0 kg

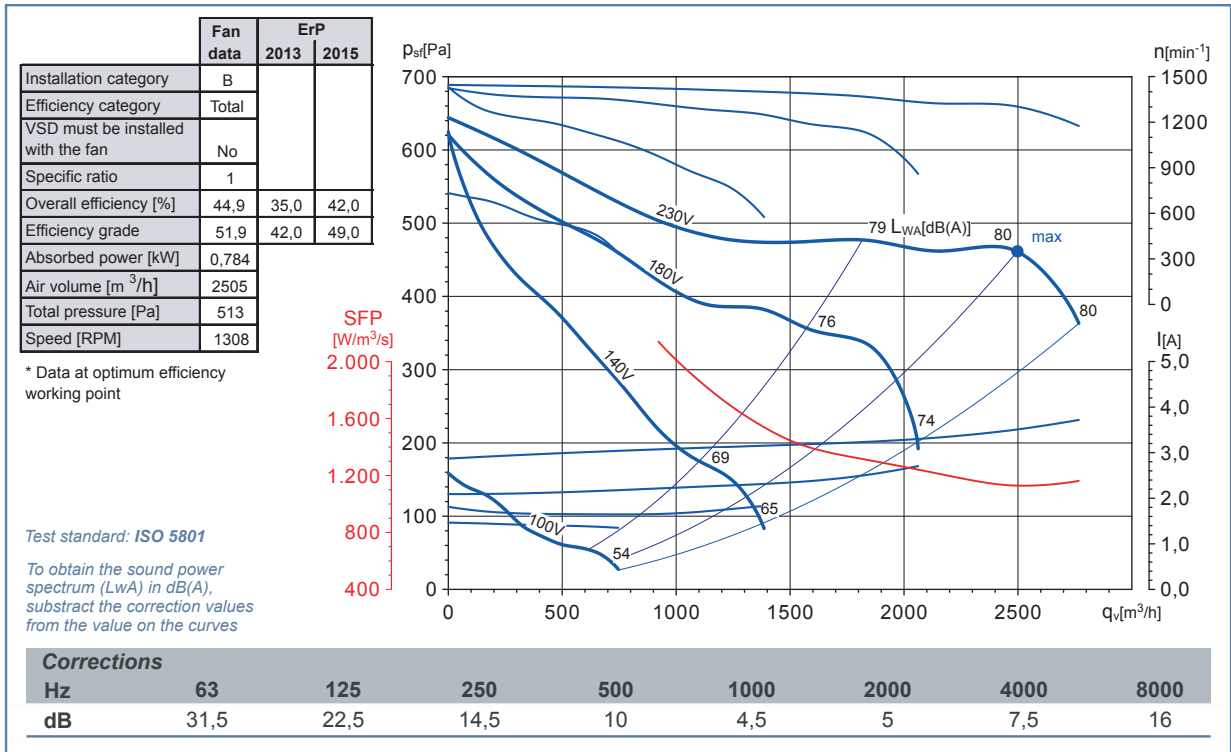
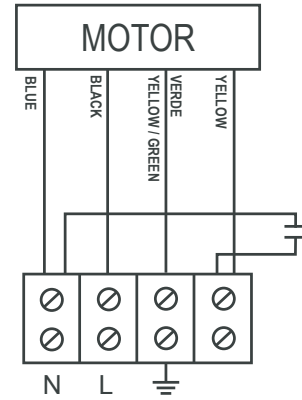
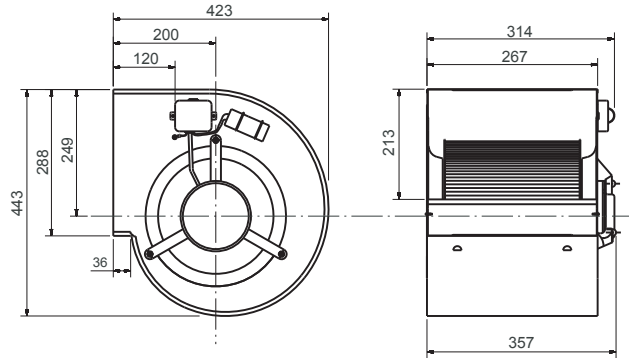


CENTRIFUGAL FANS



## 10/8 0.55 KW 4 POLI M

Voltage	Single-phase 230V 50Hz
Motor type	1V IP44 cLF
Speed	4 poles
Motor power	550W
Maximum absorption	4,5 A
Capacitor	25 mF/450V
Air temperature	-20°C < T < +40°C
Wt.	15,0 kg



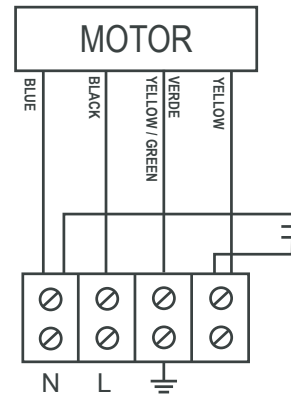
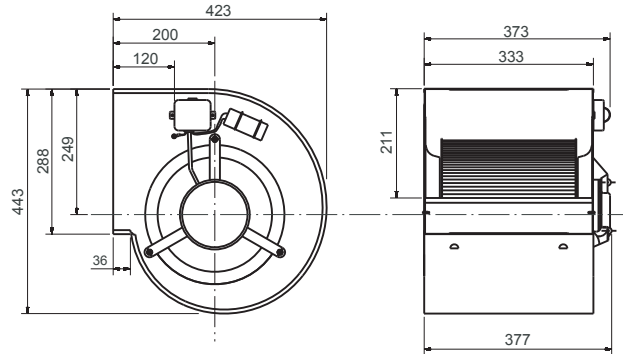


# Ventilation

Comfort and performance  
at maximum efficiency  
energy

## 10/10 0.25 KW 6 POLI M

Voltage	Single-phase 230V 50Hz
Motor type	1V IP44 cl.F
Speed	6 poles
Motor power	245W
Maximum absorption	3,1 A
Capacitor	8 mF/450V
Air temperature	-20°C < T < +40°C
Wt.	15,4 kg



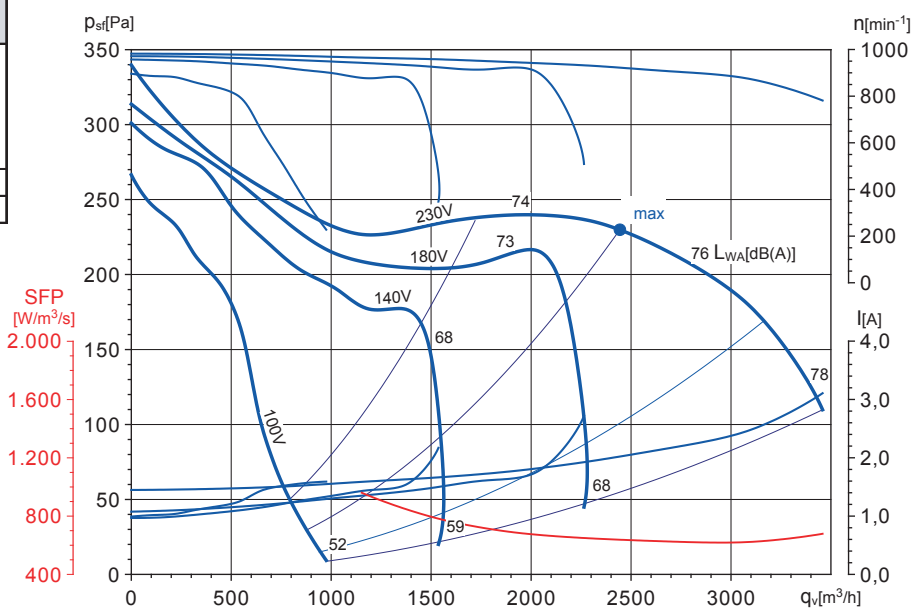
	Fan data	ErP 2015
Installation category	B	
Efficiency category	Total	
VSD must be installed with the fan	No	
Specific ratio	1	
Overall efficiency [%]	40,6	40,4
Efficiency grade	49,2	49,0
Absorbed power [kW]	0,43	
Air volume [m <sup>3</sup> /h]	2439	
Total pressure [Pa]	257	
Speed [RPM]	924	

\* Data at optimum efficiency working point

Test standard: ISO 5801

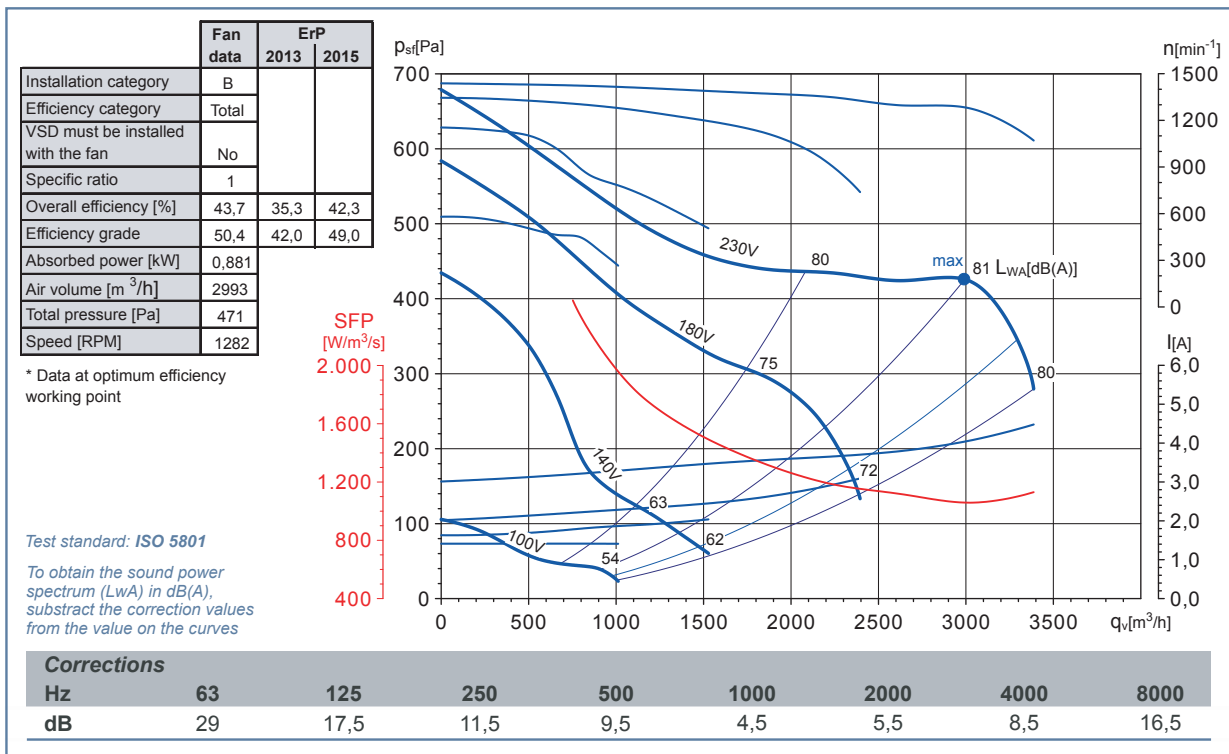
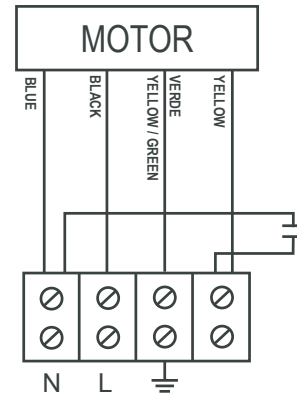
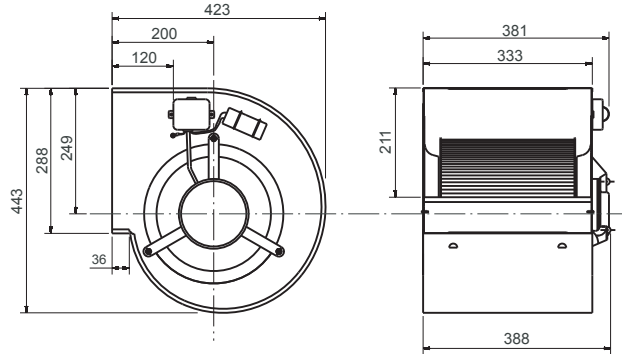
To obtain the sound power spectrum (L<sub>WA</sub>) in dB(A), subtract the correction values from the value on the curves

Corrections								
Hz	63	125	250	500	1000	2000	4000	8000
dB	32,5	22	14,5	8,5	4	5,5	9	16



## 10/10 0.55 KW 4 POLI M

Voltage	Single-phase 230V 50Hz
Motor type	1V IP44 cLF
Speed	4 poles
Motor power	550W
Maximum absorption	4,5 A
Capacitor	25 mF/450V
Air temperature	-20°C < T < +40°C
Wt.	15,3 kg



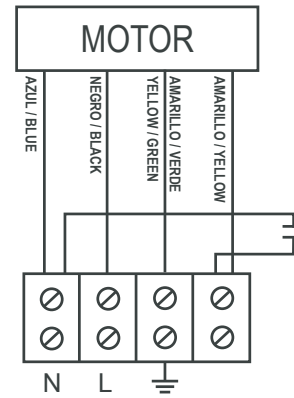
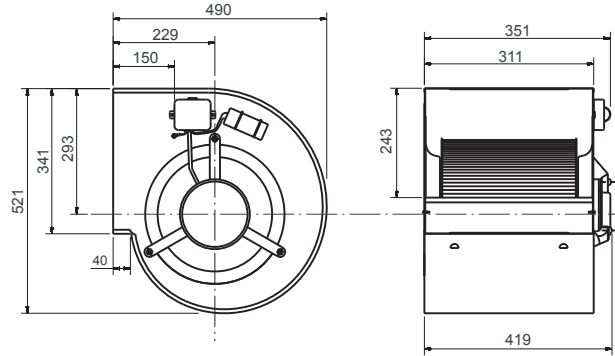


# Ventilation

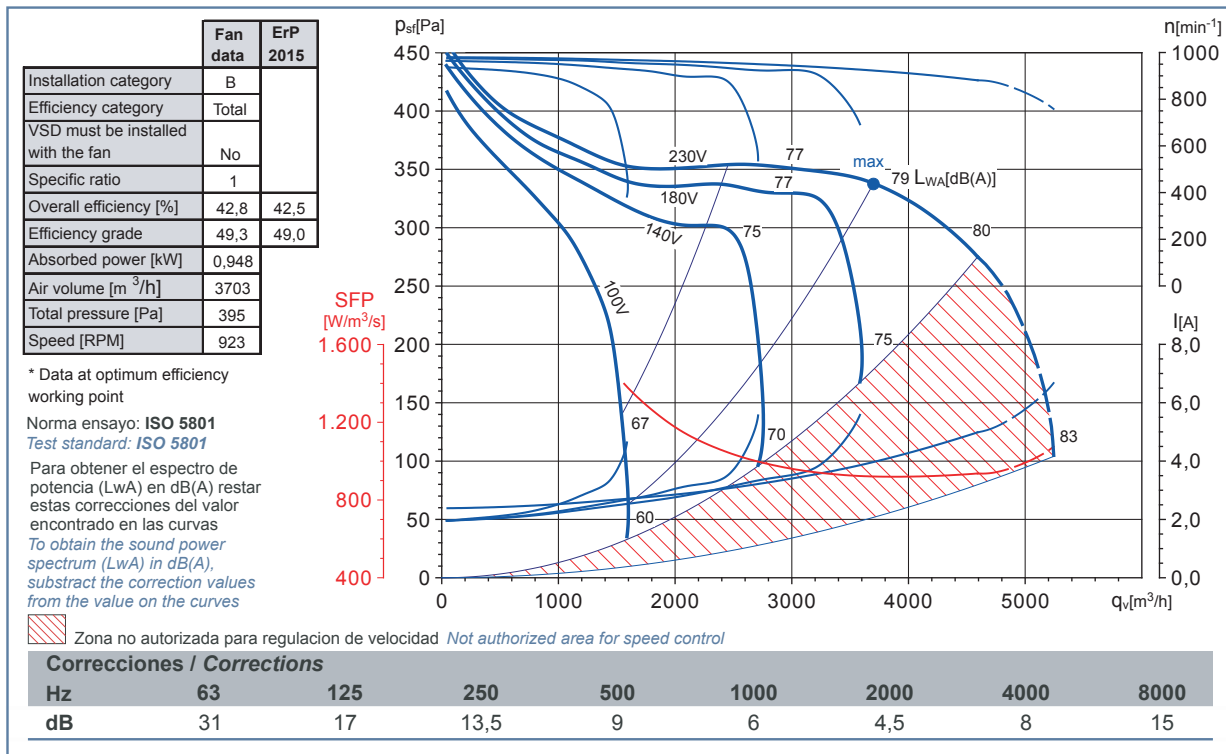
Comfort and performance  
at maximum efficiency  
energy

## 12/9 0.75 KW 6 POLI M

Voltage	Single-phase 230V 50Hz
Motor type	1V IP44 cl.F
Speed	6 poles
Motor power	736W
Maximum absorption	5.0 (6.7) A
Capacitor	25 mF/450V
Air temperature	-20°C < T < +40°C
Wt.	24.2 kg

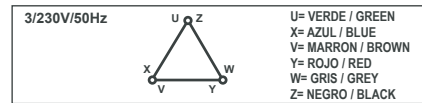
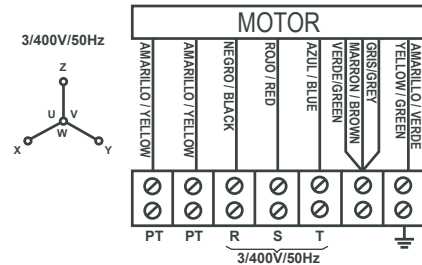
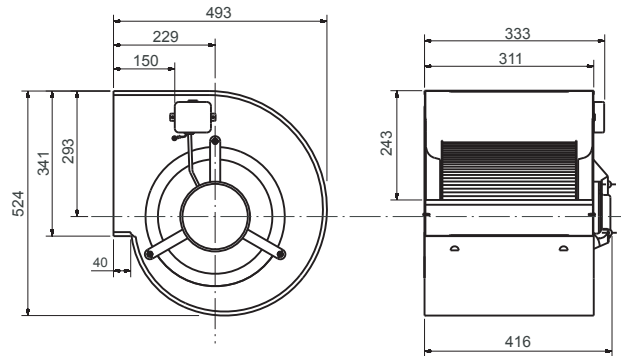


CENTRIFUGAL FANS



## 12/9 1.1 KW 6 POLI M

Voltage	Single-phase 230V 50Hz
Motor type	1V IP44 cLF
Speed	6 poles
Motor power	1100W
Maximum absorption	7,3/4,2 A
Capacitor	
Air temperature	-20°C < T < +40°C
Wt.	26,5 kg



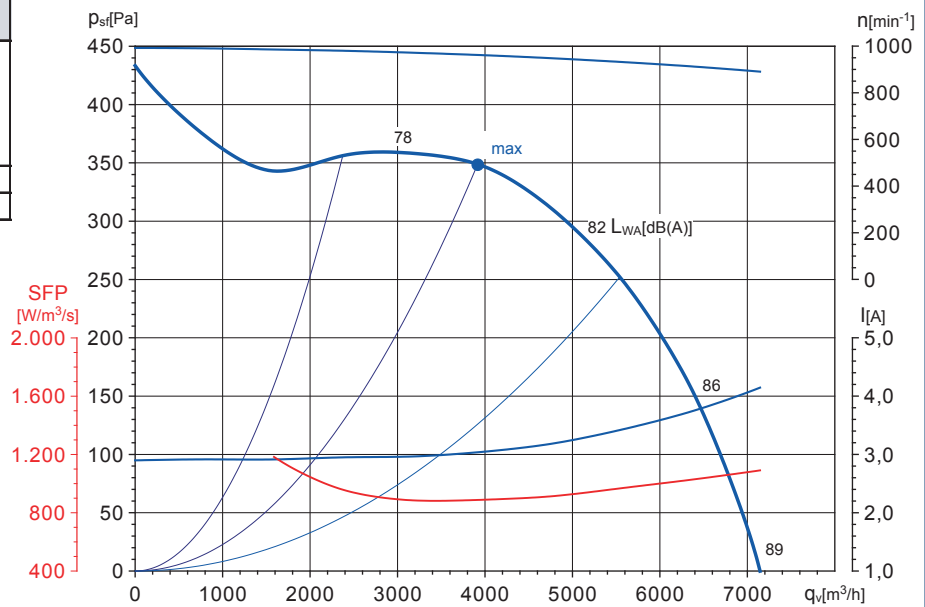
	Fan data	ErP 2015
Installation category	B	
Efficiency category	Total	
VSD must be installed with the fan	No	
Specific ratio	1	
Overall efficiency [%]	43,1	42,9
Efficiency grade	49,2	49,0
Absorbed power [kW]	1,097	
Air volume [m <sup>3</sup> /h]	3959	
Total pressure [Pa]	430	
Speed [RPM]	945	

\* Data at optimum efficiency working point

Norma ensayo: ISO 5801  
Test standard: ISO 5801

Para obtener el espectro de potencia (LwA) en dB(A) restar estas correcciones del valor encontrado en las curvas

To obtain the sound power spectrum (LwA) in dB(A), subtract the correction values from the value on the curves



### Correcciones / Corrections

Hz	63	125	250	500	1000	2000	4000	8000
dB	31	17	13,5	9	6	4,5	8	15

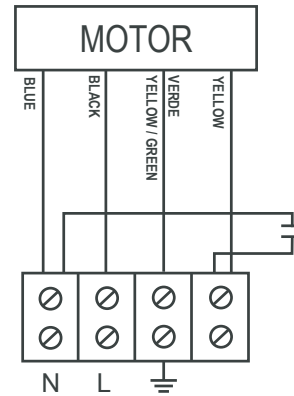
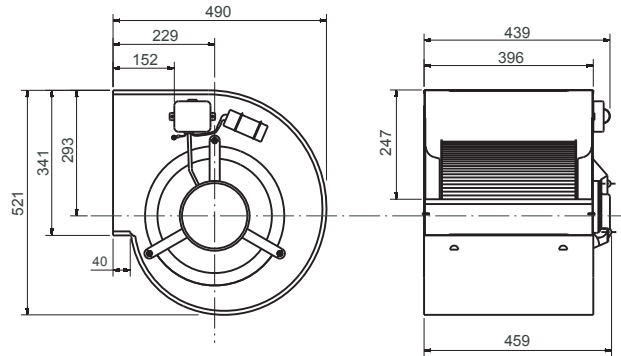


# Ventilation

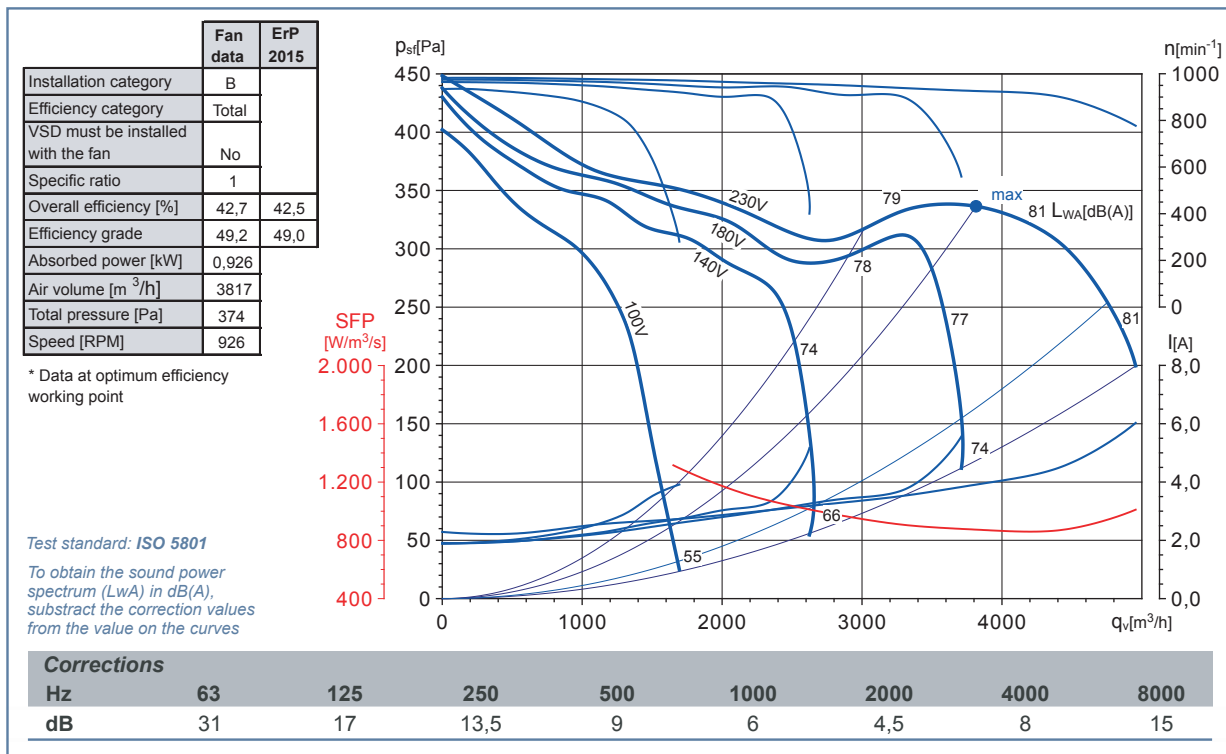
Comfort and performance  
at maximum efficiency  
energy

## 12/12 0.75 KW 6 POLI M

Voltage	Single-phase 230V 50Hz
Motor type	1V IP44 cl.F
Speed	6 poles
Motor power	736W
Maximum absorption	6,0 A
Capacitor	20 mF/450V
Air temperature	-20°C < T < +40°C
Wt.	26,5 kg



CENTRIFUGAL FANS







## ACCESSORIES



ON/OFF safety switch



3-speed selector



REM  
Speed controller  
single-phase



RVIT  
Inverter IP20 AND IP66

All images are only indicative of the product type and may differ from the actual article.