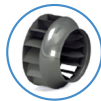
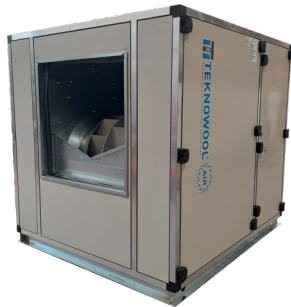


CPR

Belt-driven box fan with backward curved blades



Product

CPR

Application

Civil and industrial applications

Construction

Load-bearing structure: aluminium frame and profiles.

Panels: double sound-absorbing paneling th. 25 mm

CABINET

Structure made with extruded aluminium profiles connected by ABS corner joints. Sandwich panels in external pre-painted sheet metal RAL 7032 and internal galvanized sheet metal, with EPDM sealing profile, with interposed 25 mm rigid expanded polyurethane with density 47 kg/m³ and thermal conductivity of 0.0247 Wm²/K at 10 °C UNI 7891 according to ISO1923, sound insulation power Rw = 40 dB (ISO 140/10). Inspection door with CE-compliant closure.

FAN

Double-inlet centrifugal fan with backward curved blades, mounted on rubber anti-vibration mounts and complete with anti-vibration coupling on the discharge outlet, to isolate the structure and the system from all types of vibration. Reinforced execution with rectangular welded steel frames at the extremities. Sealed, self-aligning, maintenance-free bearings.

MOTOR

Three-phase asynchronous 4-pole motor with squirrel cage rotor, class IE3, in 400 V - 50/60 Hz execution, IP55 protection. Available in dual polarity 4/6-pole 2-speed version. Belt drive with SPA pulleys coupled with TAPER BUSH to the shafts. Belt tensioner slide on aluminium base. Working temperature range [-20 ÷ +60] °C.

APPLICATIONS



TECHNICAL
ROOMS



LARGE SPACES



HOSPITALS



CANTEENS



RESTAURANTS



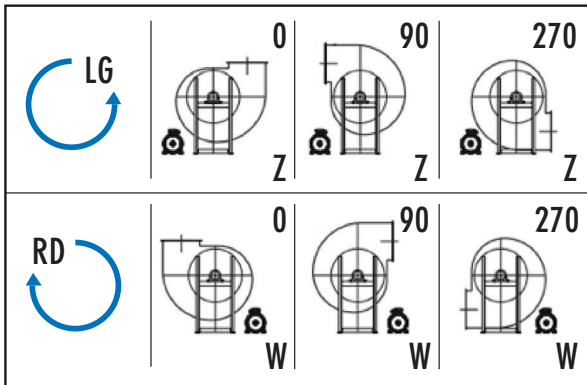
FAST FOOD



OFFICES



ORIENTATIONS



STANDARD orientation LG 90.

TECHNICAL FEATURES - OPERATING RANGE

| | | |
|-----------------------|-------------------------------|-----------------------|
| Operating range | Flow rate (m ³ /h) | From 1,500 to 43,200 |
| | Pressure (Pa) | From 200 to 1,400 |
| Min. outlet | mm | 322x322 |
| Max. outlet | mm | 898x898 |
| Motor | Volt (±10%) | 230-400 T / 400-690 T |
| | Poles | 4-6 |
| | IP | 55 |
| Fluid temp min. limit | °C | -20 |
| Fluid max. temp limit | °C | +80 |

TECHNICAL CHARACTERISTICS OF THE CABINET

The thermal and acoustic containment walls in CPR units are composed of sandwich panels, 25 mm thick, consisting of an insulating component in expanded polyurethane lined on one side with galvanized sheet metal and on the other with pre-painted sheet metal, grey RAL 7032. It has a density of 47 kg/m³.

The insulating component is expanded using water, therefore the foam contains neither CFC nor HCFC.

Thanks to the high number of closed cells, exceeding 95%, the panel foam has a thermal conductivity, measured according to UNI 7891 standard, of 0.0247 W/(m K) at a temperature of 10 °C.

Regarding the sound insulation power, according to ISO 140/10 standard, it is equal to Rw=40 dB.

The panel can be used in a temperature range between -40 °C and +80 °C in continuous operation and without substantial changes in thermal insulation characteristics.

CPR 1/2/3 structure made with 30 mm extruded aluminium profiles connected by ABS corner pieces.

CPR 4/5/6 structure made with 40 mm extruded aluminum profiles connected together by die-cast aluminum corner brackets and galvanized steel base.

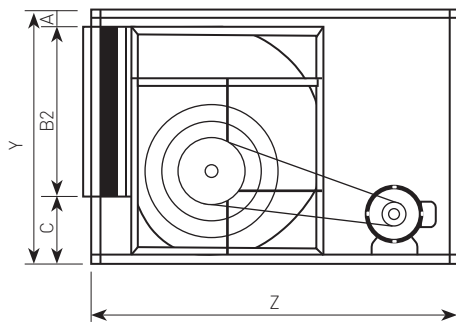
Inspection door panel equipped with sealed closures, panel opposite the inspection and opposite the discharge removable by means of screws.

CPR

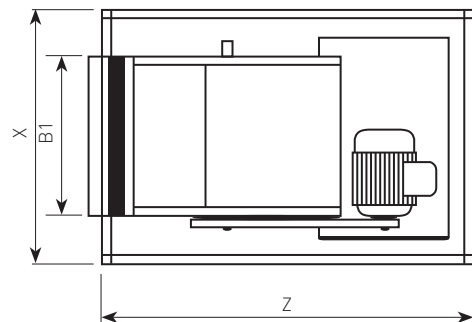
Centrifugal box fan
belt-driven with backward curved blades

DIMENSIONS

| Model | Fan blade Inches | Supply outlet B1xB2 mm | X mm | Y mm | Z mm | C mm | A mm | Wt kg |
|-------|---------------------|---------------------------|---------|---------|---------|---------|---------|----------|
| CPR1 | 250 | 322x322 | 750 | 750 | 900 | 269 | 159 | 100 |
| CPR2 | 315 | 404x404 | 900 | 900 | 1000 | 304 | 192 | 140 |
| CPR3 | 400 | 507x507 | 1000 | 1000 | 1200 | 359 | 134 | 190 |
| CPR4 | 500 | 638x638 | 1290 | 1290 | 1540 | 410 | 242 | 280 |
| CPR5 | 630 | 801x801 | 1540 | 1540 | 1790 | 526 | 213 | 460 |
| CPR6 | 710 | 898x898 | 1790 | 1790 | 2040 | 575 | 317 | 750 |



LEFT SIDE VIEW



TOP VIEW



QUICK SELECTION TABLE

| CPR Model | Fan | Flow rate m ³ /h | Pa 200 RPM-kW | Pa 400 RPM-kW | Pa 550 RPM-kW | Pa 700 RPM-kW | Pa 850 RPM-kW | Pa 1000 RPM-kW | Pa 1150 RPM-kW | Pa 1300 RPM-kW | dB(A) min./max. |
|-----------|-----|--------------------------------|------------------|------------------|------------------|------------------|------------------|-------------------|-------------------|-------------------|--------------------|
| CPR 1 | 250 | 1500 | 1648-0,37 | 1944-0,37 | 2333-0,55 | 2488-1,1 | 2800-1,1 | 2955-1,5 | 3111-1,5 | 3484-2,2 | 50/65 |
| | | 2000 | 1835-0,37 | 2082-0,55 | 2333-1,1 | 2644-1,1 | 2800-1,1 | 3111-1,5 | 3322-1,5 | 3484-2,2 | 50/65 |
| | | 3000 | 2177-0,55 | 2488-1,1 | 2644-1,1 | 2955-1,1 | 3111-1,5 | 3322-1,5 | 3484-2,2 | 3527-2,2 | 56/67 |
| | | 4000 | 2644-0,55 | 2800-1,5 | 3111-1,5 | 3322-2,2 | 3484-2,2 | 3500-2,2 | 3737-3 | 3888-3 | 62/70 |
| CPR 2 | 315 | 3000 | 1400-0,37 | 1648-1,1 | 1835-1,1 | 2053-1,5 | 2333-1,5 | 2488-2,2 | 2644-2,2 | 2800-3 | 50/67 |
| | | 4000 | 1555-1,1 | 1835-1,1 | 1944-1,5 | 2177-1,5 | 2333-2,2 | 2488-2,2 | 2644-3 | 2800-3 | 56/67 |
| | | 6000 | 1944-1,1 | 2177-1,5 | 2333-2,2 | 2488-3 | 2644-3 | 2800-3 | 2955-4 | 3111-4 | 64/70 |
| | | 8000 | - | 2644-3 | 2800-4 | 2800-4 | 2955-4 | 3111-5,5 | 3322-5,5 | 3322-5,5 | 70/75 |
| CPR 3 | 400 | 4000 | 1008-0,55 | 1260-1,1 | 1400-1,1 | 1555-1,5 | 1750-2,2 | 1944-3 | 2053-3 | 2177-3 | 53/67 |
| | | 5000 | 1125-1,1 | 1326-1,1 | 1400-1,5 | 1651-2,2 | 1750-2,2 | 1944-3 | 2053-3 | 2177-4 | 54/65 |
| | | 6000 | 1189-1,1 | 1400-1,5 | 1555-1,5 | 1651-2,2 | 1835-3 | 1944-3 | 2053-4 | 2177-4 | 56/67 |
| | | 7000 | 1260-1,1 | 1400-1,5 | 1568-2,2 | 1742-3 | 1835-3 | 2053-4 | 2177-5,5 | 2177-5,5 | 61/69 |
| | | 9000 | 1400-2,2 | 1648-3 | 1742-3 | 1944-4 | 2053-4 | 2177-5,5 | 2177-5,5 | 2333-7,5 | 66/72 |
| | | 11000 | - | 1835-4 | 1944-4 | 2053-5,5 | 2177-5,5 | 2333-7,5 | 2333-7,5 | 2488-7,5 | 69/74 |
| CPR 4 | 500 | 7000 | 840-1,1 | 1008-1,5 | 1186-2,2 | 1326-3 | 1400-4 | 1568-4 | 1648-5,5 | 1742-5,5 | 56/70 |
| | | 8000 | 900-1,1 | 1008-1,5 | 1186-2,2 | 1326-3 | 1400-4 | 1568-4 | 1648-5,5 | 1750-7,5 | 57/70 |
| | | 9000 | 900-1,5 | 1061-2,2 | 1189-3 | 1321-4 | 1400-4 | 1555-5,5 | 1648-5,5 | 1750-7,5 | 58/70 |
| | | 10000 | 955-1,5 | 1120-2,2 | 1260-3 | 1321-4 | 1400-4 | 1555-5,5 | 1651-7,5 | 1750-7,5 | 60/70 |
| | | 12000 | 1061-2,2 | 1189-3 | 1321-4 | 1400-4 | 1555-5,5 | 1651-7,5 | 1750-7,5 | 1750-11 | 64/71 |
| | | 14000 | 1189-3 | 1321-4 | 1400-4 | 1400-5,5 | 1568-7,5 | 1651-7,5 | 1750-7,5 | 1875-11 | 66/72 |
| | | 16000 | - | 1400-5,5 | 1400-5,5 | 1568-7,5 | 1651-7,5 | 1750-11 | 1875-11 | 1875-11 | 69/74 |
| CPR 5 | 630 | 10000 | - | 778-2,2 | 900-3 | 1061-4 | 1120-5,5 | 1277-5,5 | 1350-7,5 | - | 56/75 |
| | | 12000 | 663-1,5 | 824-2,2 | 933-4 | 1061-4 | 1120-5,5 | 1254-7,5 | 1329-7,5 | 1400-11 | 58/75 |
| | | 14000 | 700-2,2 | 840-3 | 933-4 | 1068-5,5 | 1120-7,5 | 1254-7,5 | 1326-11 | 1400-11 | 60/75 |
| | | 16000 | 741-3 | 840-4 | 955-5,5 | 1068-5,5 | 1188-7,5 | 1250-11 | 1326-11 | 1400-11 | 62/75 |
| | | 18000 | 787-3 | 933-4 | 1008-5,5 | 1068-5,5 | 1188-7,5 | 1250-11 | 1326-11 | 1400-11 | 64/75 |
| | | 20000 | 840-4 | 955-5,5 | 1061-7,5 | 1120-7,5 | 1250-11 | 1326-11 | 1363-11 | 1460-11 | 66/75 |
| | | 22000 | 875-4 | 1008-5,5 | 1061-7,5 | 1188-7,5 | 1250-11 | 1326-11 | 1363-11 | 1455-15 | 67/75 |
| | | 16000 | - | 700-4 | 840-5,5 | 900-5,5 | 1000-7,5 | 1101-11 | 1167-11 | 1202-11 | 60/73 |
| CPR 6 | 710 | 18000 | - | 741-4 | 840-5,5 | 900-5,5 | 1000-7,5 | 1101-11 | 1167-11 | 1202-11 | 60/73 |
| | | 20000 | 663-3 | 741-4 | 840-5,5 | 933-7,5 | 1032-11 | 1101-11 | 1202-11 | 1225-15 | 63/73 |
| | | 22000 | 700-3 | 787-5,5 | 875-7,5 | 933-7,5 | 1032-11 | 1101-11 | 1202-11 | 1225-15 | 64/73 |
| | | 25000 | 741-4 | 840-5,5 | 933-7,5 | 972-11 | 1032-11 | 1134-11 | 1225-15 | 1293-15 | 66/75 |
| | | 28000 | 787-5,5 | 875-7,5 | 972-11 | 1032-11 | 1101-11 | 1164-15 | 1225-15 | 1293-15 | 68/75 |
| | | 30000 | 824-7,5 | 933-7,5 | 972-11 | 1032-11 | 1134-11 | 1164-15 | 1225-15 | - | 69/75 |

Performance data was measured with suitable instruments in our laboratories.

Air performance at 15 °C temperature with a pressure of 760 mmH2O.

The indicated flow rate and pressure performances refer to the installation of the fan unit with ducted discharge.

The reported noise is expressed as sound pressure, measured at a distance of 1.5 m in free field.

The power values indicated refer to the actual installed power of the fan unit.

Refer to the performance curves for the correct model selection.

CPR

Centrifugal box fan
belt-driven with backward curved blades

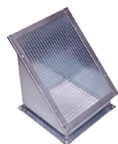
ACCESSORIES



Anti-vibration joint



Rain guard roof



Exhaust connector with mesh protection



Duct connector
Ductable filter holder



Support feet



Switch
safety ON/OFF



RVIT
Inverter IP20 AND IP66



Disconnecter
and switch 2 V 20 A

All images are only indicative of the product type and may differ from the actual article.