

MPS

Kitchen oily fume extraction fan



Product

MPS

Application

Civil and industrial applications

Construction

External housing: galvanized steel sheet lined with 40 mm non-combustible mineral wool

SPECIFICATIONS

Fan wheel for extraction of oily kitchen fumes, with an average and maximum air temperature of 120 °C. External casing in galvanized steel sheet lined with 40 mm non-combustible mineral wool according to DIN EN 13501-1 standard, building material class A1.

Assembled mounting guides fitted with rubber anti-vibration mounts; they can also be repositioned on the housing, allowing three discharge directions.

Air duct connectors with standard dimensions and double-lip seals for airtight connections.

Grease container / condensate drain integrated in the body, usable only if installed with upward discharge.

Condensate drain valve located under the base of the device.

FAN

High-performance impeller with backward curved blades consisting of a powder-coated steel plate, dynamically balanced according to quality class G 6.3 of DIN/ISO 1940, on 2 planes.

Maintenance-free, self-lubricating ball bearings, sealed on the cabinet sides.

In three-phase models, the impeller is mounted on the motor shaft with a special shaft seal that prevents the ingress of oil and water.

Openable fan section, lockable in the open position and therefore also usable as an access door for cleaning and maintenance work.

MOTOR

Motor in three-phase 400 V/50 Hz version, IEC standard. Speed control possible via frequency converter.

Motor outside the airflow for optimal protection from dirt.

In three-phase models, the motor thermal protection must be installed on site.

ON REQUEST: version with EC motor.

APPLICATIONS



CANTEENS



RESTAURANTS

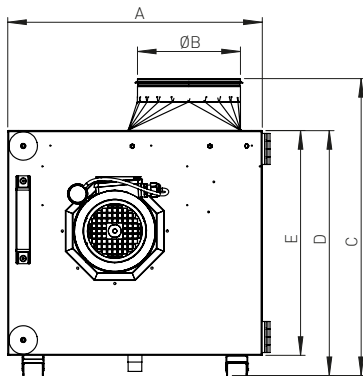


FAST FOOD

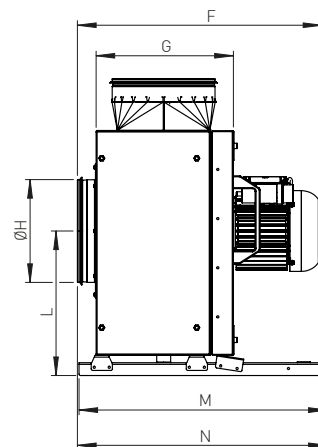


DIMENSIONS

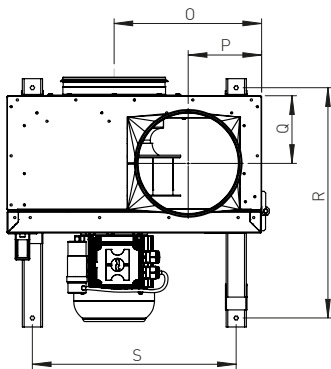
Size	A	ØB	C	D	E	F	G	ØH	L	M	N	O	P	Q	R	S
	mm	mm	mm	mm	mm	mm	mm	mm	mm	mm	mm	mm	mm	mm	mm	mm
225 D2 30	492	199	574	474	435	481	265	199	279	480	483	285	142	131	445	394
250 D2 30	592	249	693	561	522	550	315	249	329	540	562	344	166	156	505	494
280 D2 30	592	314	692	561	522	555	315	314	329	540	567	344	199	156	505	494
315 D2 30	700	354	790	663	624	624	365	354	382	590	620	404	218	181	555	602
315 D4 30	700	354	790	663	624	624	365	354	382	590	620	404	218	181	555	602
355 D4 30	700	354	790	663	624	624	365	354	382	590	620	404	218	181	555	602
400 D4 30	832	354	916	789	750	624	365	354	448	590	620	477	218	181	555	734
450 D4 30	832	354	916	789	751	667	365	354	448	590	620	477	218	181	555	734
500 D4 30	1016	399	1098	954	915	821	510	399	539	834	873	584	242	253	799	918
560 D4 30	1016	499	1112	954	915	859	510	499	539	834	876	584	290	253	799	918



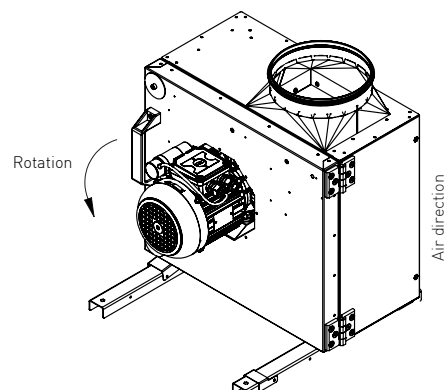
FRONT VIEW



LEFT SIDE VIEW



TOP VIEW



TECHNICAL CHARACTERISTICS

MPS Model	Max. flow rate m ³ /h	Max. speed RPM	Power supply Volt/Hz	I max. A	Max. absor- bed power W	Sound power dB(A)	Protection degree	Wt. kg
225 D2 30	1960	3530	400/50	0,9	486	83	IP55	29,3
250 D2 30	2730	3480	400/50	1,3	756	85	IP55	38
280 D2 30	3350	2920	400/50	1,3	759	85	IP55	38,5
315 D2 30	4520	2950	400/50	2,4	1221	87	IP55	52,9
315 D4 30	3580	2360	400/50	1,2	669	80	IP55	52,9
355 D4 30	4350	2060	400/50	1,4	775	82	IP55	54,7
400 D4 30	4450	1480	400/50	1,1	564	74	IP55	72,1
450 D4 30	6660	1630	400/50	2,5	1278	82	IP55	74,9
500 D4 30	7890	1490	400/50	3	1504	83	IP55	112,7
560 D4 30	11840	1480	400/50	5	2577	86	IP55	115



ACCESSORIES

THREE-PHASE



Safety switch
ON/OFF



RVIT
Inverter IP20 and IP66



Disconnecter
and switch 2V 20A



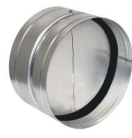
Wall bracket in galvanized
steel sheet
(1 set= 2 pcs)



Terminals for closing and
noise reduction
(1 set = 2 pcs)



Duct-mounted damper with
external frame in galvanized
steel sheet and aluminium
blades



Duct-mounted damper with
seal and external frame in
galvanized steel sheet and
aluminium blades

All images are only indicative of the product type and may differ from the actual article.