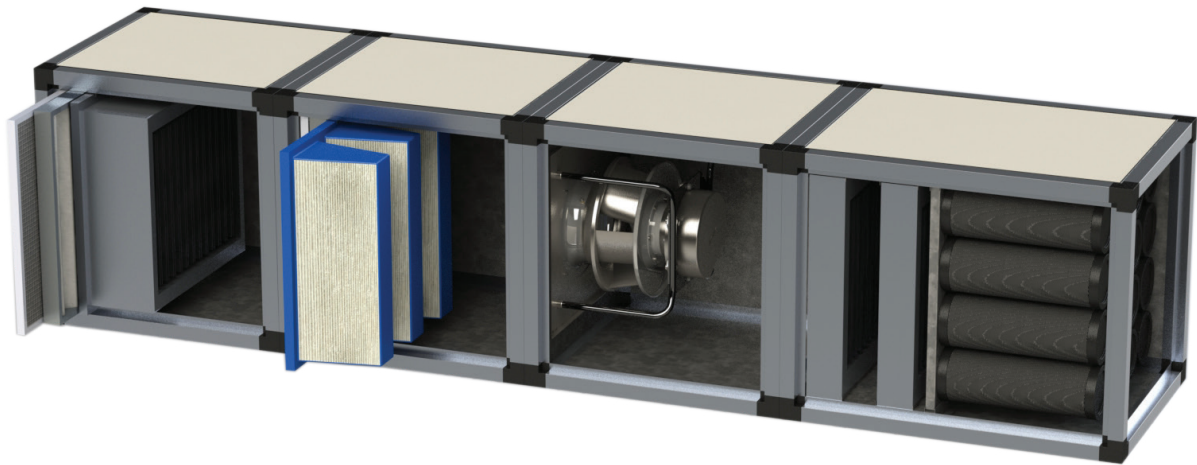


U SERIES

Modular air handling unit



FAN MODULES

UPB: High-efficiency PLUG-FAN ventilation unit with backward curved blades and directly coupled BRUSHLESS motor. Speed regulation via 0-10 V signal or optional manual potentiometer.

UTR: Fan Unit with forward curved blade centrifugal fan, double inlet, driven by asynchronous motor with belt drive.

FILTER MODULES

UFT: Bag Filter Unit – Multi-stage filtration up to F18 class (EN 779) F8 (ISO ePm1 60%).

UFTF: Bag Filter Unit - Multi-stage filtration up to F16S class (EN 779) F9 (ISO ePm1 85%).

UFTH: H13 Bag Filter Unit - Multi-stage filtration up to F18H HEPA class (EN 779) H13 (ISO ePm1 99%).

UFES: Electrostatic Filter Unit – Multi-stage filtration up to electrostatic action class (EN 779) E10 (ISO ePm1 95%).

UFC: Activated carbon filtering and deodorizing unit - F19C cartridges (CTC 45%) 160 mm (3.1 kg activated carbon each) or on request 140 mm (2.5 kg activated carbon each).

UFIOC: Combined Filter Unit for MAXIMUM ODOUR REDUCTION – Ionizing Stage (ion emission 5 million per cm³) Ozone stage (0 emissions₃ 294 µg/m³) and Activated Carbon Stage F19C (CTC 45%) 140 mm cartridges (2.5 kg activated carbon) or 160 mm (3 kg activated carbon).

APPLICATIONS



CIVIL
VENTILATION



TECHNICAL
ROOMS



OFFICES



PUBLIC
SERVICES



CANTEENS



RESTAURANTS



FAST FOOD



CHARACTERISTICS OF THE U SERIES STRUCTURE

The thermal and acoustic containment walls in the U series are composed of sandwich panels, having a thickness of 25 mm, consisting of an insulating component in expanded polyurethane lined on one side with galvanized sheet metal and on the other with pre-painted sheet metal, grey RAL 7032. It has a density of 47 kg/m³.

The insulating component is expanded using water, therefore the foam contains neither CFC nor HCFC.

Thanks to the high number of closed cells, exceeding 95%, the panel foam has a thermal conductivity, measured according to UNI 7891 standard, of 0.0247 W/(m K) at a temperature of 10 °C.

Regarding the sound insulation power, according to ISO 140/10 standard, it is equal to Rw=40 dB.

The panel can be used in a temperature range between -40 °C and +80 °C in continuous operation and without substantial changes in thermal insulation characteristics.

Structures made with 40 mm extruded aluminium profiles connected by die-cast aluminium corner pieces.

Inspection door panel equipped with sealed closures, panel opposite the inspection and opposite the discharge removable by means of screws.

ACCESSORIES

| Code | Description |
|---------------------------------------|--|
| RVEBM106FE0008 | Potentiometer for manual speed adjustment via 0-10 V signal. To be used with UPB module |
| ACCOMFE0000080 | Detergent for cleaning electrostatic cells. 10 kg container |
| DB1PAN05730633 | Front closure panel - Size 3000 - 573x633 |
| DB1PAN08630633 | Front closure panel - Size 4500 - 863x633 |
| DB1PAN11680633 | Front closure panel - Size 6000 - 1168x633 |
| DB1PAN14580633 | Front closure panel - Size 7500 - 1458x633 |
| DB1PAN11680923 | Front closure panel - Size 9000 - 1168x923 |
| DB1PAN11681228 | Front closure panel - Size 12000 - 1168x1228 |
| 2x DB1PAN02561228 + 1x DB1PAN11681228 | Front closure panel - Size 18000 - 2x 1228x256 + 1x 1168x1228 |

ON REQUEST

Heating/cooling and dehumidification coil

Water coil (hot/cold)

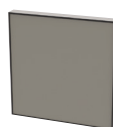
Electric heating coil



Potentiometer



Detergent for electrostatic cells



Closing panel front



Water coil

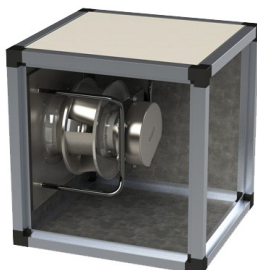


Electric heater

U SERIES

Modular air handling unit

FAN MODULE UPB

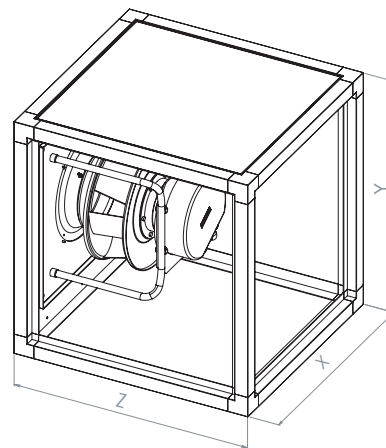


High-efficiency BRUSHLESS PLUG-FAN ventilation unit. Centrifugal fan with backward curved blades and BRUSHLESS permanent magnet motor, directly coupled. Speed regulation via 0-10V signal or optional manual potentiometer, operation and fault signaling, external enable input, fault relay, performance and motor current limitation, passive PFC, RS485 MODBUS-RTU, progressive start-up, overheating protection for electronics/motor, low voltage/phase loss detection. Power supply 400 V - 3ph - 50/60 Hz. Operating temperature range: $-25 \div +50$ °C.

High suction performance, compact dimensions, easily adjustable operating point, maximum reliability, virtually no maintenance.

DIMENSIONS

| Size | Type box | Wt. kg | X mm | Y mm | Z mm |
|-------|----------|--------|------|------|------|
| 3000 | 1 | 54 | 655 | 715 | 700 |
| 4500 | 1 | 67 | 945 | 715 | 700 |
| 6000 | 1 | 79 | 1250 | 715 | 700 |
| 7500 | 1 | 93 | 1540 | 715 | 700 |
| 9000 | 1 | 101 | 1250 | 1005 | 700 |
| 12000 | 1 | 130 | 1250 | 1310 | 700 |
| 18000 | 1 | 134 | 1845 | 1310 | 700 |



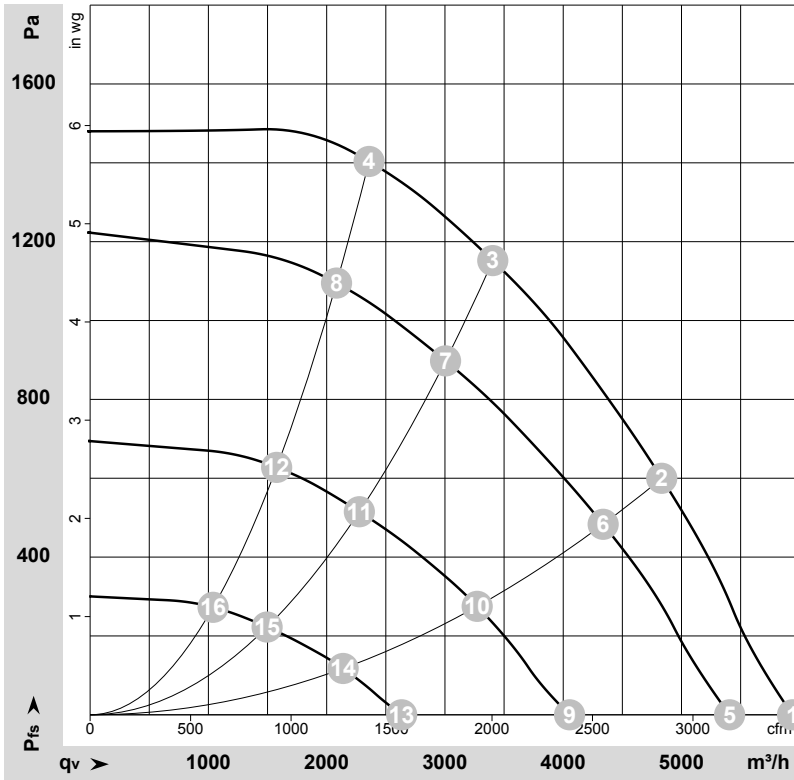
QUICK SELECTION TABLE

| Model | Fan | Flow rate m ³ /h | Pressure Pa | Power Duty point W | Max. motor power W | RPM RPM | Power sound dB |
|-------|-----------------|--------------------------------|----------------|--------------------------|-----------------------|------------|----------------------|
| 3000 | K3G310PH3805 | 3000 | 1100 | 1517 | 1800 | 3191 | 67 |
| 4500 | K3G355PI9305 | 4500 | 1100 | 2162 | 2680 | 2960 | 67 |
| 6000 | K3G400PA2762 | 6000 | 1100 | 2761 | 3650 | 2526 | 72 |
| 7500 | K3G450PA3161 | 7500 | 1100 | 3386 | 4450 | 2221 | 69 |
| 9000 | K3G500PB2461 | 9000 | 1100 | 3990 | 3900 | 2011 | 71 |
| 12000 | 2x K3G400PA2762 | 12000 | 1100 | 5551 | 2x 3650 | 2530 | 70 |
| 18000 | 2x K3G450PB2405 | 18000 | 1100 | 8386 | 2x 5250 | 2398 | 75 |



CHARACTERISTIC CURVES - AIR FLOW RATE 50 HZ

UPB 3000 - K3G310PH3805



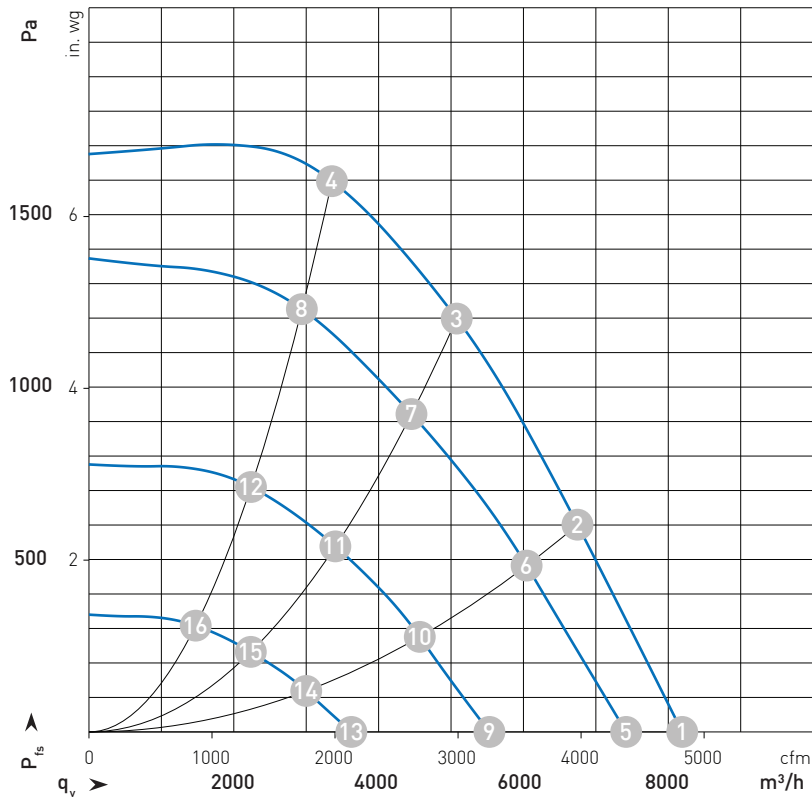
| | U | F | n | P _{ed} | I | LpA _{in} | LwA _{in} | LwA _{out} | q _v | p _{fs} | q _v | p _{fs} |
|----|-----|----|-------------------|-----------------|------|-------------------|-------------------|--------------------|-------------------|-----------------|----------------|-----------------|
| | V | Hz | min ⁻¹ | W | A | dB(A) | dB(A) | dB(A) | m ³ /h | Pa | cfm | in. wg |
| 1 | 400 | 50 | 3410 | 1045 | 1,68 | 87 | 93 | 95 | 5940 | 0 | 3495 | 0,00 |
| 2 | 400 | 50 | 3410 | 1543 | 2,40 | 79 | 86 | 90 | 4835 | 600 | 2845 | 2,41 |
| 3 | 400 | 50 | 3410 | 1800 | 2,80 | 75 | 83 | 88 | 3405 | 1150 | 2005 | 4,62 |
| 4 | 400 | 50 | 3410 | 1745 | 2,69 | 78 | 87 | 90 | 2360 | 1400 | 1390 | 5,62 |
| 5 | 400 | 50 | 3145 | 824 | 1,37 | 84 | 91 | 93 | 5405 | 0 | 3180 | 0,00 |
| 6 | 400 | 50 | 3070 | 1130 | 1,79 | 76 | 84 | 88 | 4340 | 485 | 2555 | 1,95 |
| 7 | 400 | 50 | 3035 | 1243 | 1,96 | 72 | 80 | 85 | 3005 | 898 | 1770 | 3,61 |
| 8 | 400 | 50 | 3035 | 1224 | 1,93 | 75 | 83 | 88 | 2085 | 1096 | 1225 | 4,40 |
| 9 | 400 | 50 | 2360 | 394 | 0,76 | 76 | 84 | 86 | 4055 | 0 | 2385 | 0,00 |
| 10 | 400 | 50 | 2315 | 528 | 0,97 | 69 | 77 | 81 | 3275 | 276 | 1925 | 1,11 |
| 11 | 400 | 50 | 2300 | 585 | 1,05 | 66 | 73 | 79 | 2275 | 515 | 1340 | 2,07 |
| 12 | 400 | 50 | 2300 | 572 | 1,03 | 69 | 76 | 81 | 1575 | 628 | 930 | 2,52 |
| 13 | 400 | 50 | 1550 | 148 | 0,36 | 66 | 75 | 76 | 2635 | 0 | 1550 | 0,00 |
| 14 | 400 | 50 | 1525 | 187 | 0,42 | 59 | 67 | 72 | 2140 | 118 | 1260 | 0,47 |
| 15 | 400 | 50 | 1510 | 204 | 0,45 | 57 | 64 | 70 | 1495 | 223 | 880 | 0,90 |
| 16 | 400 | 50 | 1510 | 203 | 0,44 | 58 | 66 | 71 | 1040 | 273 | 610 | 1,10 |

U = Supply voltage. f = Frequency. n = Speed (RPM). P_{ed} = Absorbed power. I = Absorbed current. LpA_{in} = Sound pressure level on suction side. LwA_{in} = Sound power level on suction side. LwA_{out} = Sound power level on pressure side. q_v = Volume flow rate. p_{fs} = Pressure increase.

U SERIES

Modular air handling unit

UPB 4500 - K3G355PI9305



| | U | F | n | P _{ed} | I | LpA _{in} | LwA _{in} | LwA _{out} | q _v | p _{fs} | q _v | p _{fs} |
|----|-----|----|-------------------|-----------------|------|-------------------|-------------------|--------------------|----------------|-----------------|----------------|-----------------|
| | V | Hz | min ⁻¹ | W | A | dB(A) | dB(A) | dB(A) | m³/h | Pa | cfm | in. wg |
| 1 | 400 | 50 | 3230 | 1483 | 2.30 | 86 | 93 | 95 | 8190 | 0 | 4820 | 0.00 |
| 2 | 400 | 50 | 3230 | 2164 | 3.32 | 79 | 87 | 91 | 6745 | 600 | 3970 | 2.41 |
| 3 | 400 | 50 | 3230 | 2680 | 4.10 | 75 | 83 | 88 | 5080 | 1200 | 2990 | 4.82 |
| 4 | 400 | 50 | 3230 | 2560 | 3.94 | 79 | 87 | 91 | 3355 | 1600 | 1975 | 6.42 |
| 5 | 400 | 50 | 2955 | 1123 | 1.78 | 83 | 90 | 93 | 7420 | 0 | 4365 | 0.00 |
| 6 | 400 | 50 | 2885 | 1550 | 2.40 | 76 | 84 | 88 | 6045 | 483 | 3555 | 1.94 |
| 7 | 400 | 50 | 2840 | 1800 | 2.76 | 72 | 80 | 85 | 4455 | 922 | 2620 | 3.70 |
| 8 | 400 | 50 | 2845 | 1750 | 2.69 | 76 | 83 | 88 | 2940 | 1227 | 1730 | 4.93 |
| 9 | 400 | 50 | 2215 | 525 | 0.96 | 76 | 84 | 87 | 5530 | 0 | 3255 | 0.00 |
| 10 | 400 | 50 | 2185 | 718 | 1.22 | 70 | 78 | 82 | 4570 | 276 | 2690 | 1.11 |
| 11 | 400 | 50 | 2165 | 831 | 1.37 | 67 | 74 | 80 | 3405 | 538 | 2005 | 2.16 |
| 12 | 400 | 50 | 2165 | 815 | 1.35 | 70 | 77 | 81 | 2240 | 711 | 1315 | 2.85 |
| 13 | 400 | 50 | 1460 | 194 | 0.43 | 65 | 74 | 77 | 3625 | 0 | 2130 | 0.00 |
| 14 | 400 | 50 | 1440 | 248 | 0.51 | 60 | 68 | 73 | 3000 | 119 | 1765 | 0.48 |
| 15 | 400 | 50 | 1425 | 280 | 0.57 | 58 | 65 | 71 | 2235 | 232 | 1315 | 0.93 |
| 16 | 400 | 50 | 1425 | 276 | 0.56 | 59 | 66 | 72 | 1475 | 309 | 870 | 1.24 |

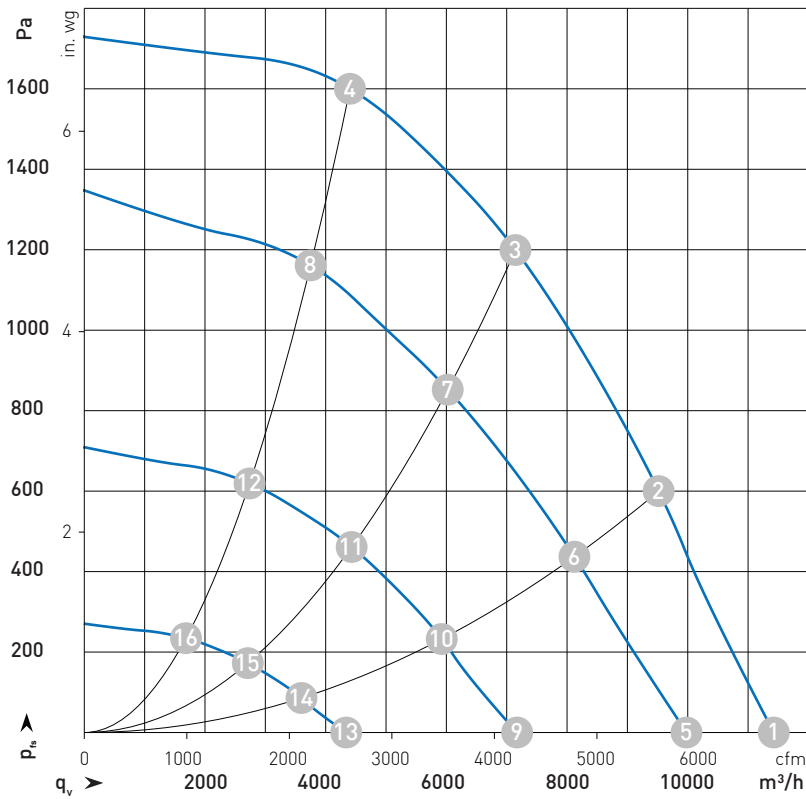
U = Supply voltage. f = Frequency. n = Speed (RPM). P_{ed} = Absorbed power. I = Absorbed current. LpA_{in} = Sound pressure level on suction side. LwA_{in} = Sound power level on suction side. LwA_{out} = Sound power level on pressure side. q_v = Volume flow rate. p_{fs} = Pressure increase.



Ventilation

Comfort and performance
at maximum efficiency
energy

UPB 6000 - K3G400PA2762
UPB 12000 - 2x K3G400PA2762*



* Referring to the graph, double the flow rates

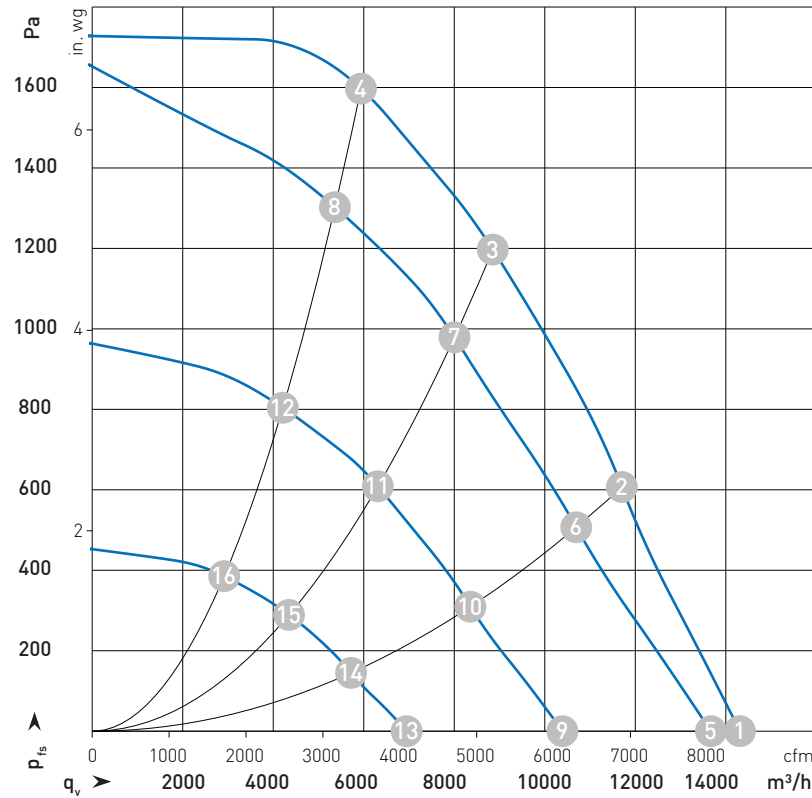
| Wiring | U | F | n | P _{ed} | I | LpA _{in} | LwA _{in} | LwA _{out} | q _v | p _{fs} | q _v | p _{fs} | |
|--------|----|-----|-------------------|-----------------|------|-------------------|-------------------|--------------------|-------------------|-----------------|----------------|-----------------|------|
| | V | Hz | min ⁻¹ | W | A | dB(A) | dB(A) | dB(A) | m ³ /h | Pa | cfm | in. wg | |
| 1 | 3~ | 400 | 50 | 2800 | 2291 | 3,54 | 91 | 98 | 100 | 11425 | 0 | 6725 | 0,00 |
| 2 | 3~ | 400 | 50 | 2800 | 3219 | 4,92 | 83 | 91 | 96 | 9520 | 600 | 5600 | 2,41 |
| 3 | 3~ | 400 | 50 | 2800 | 3650 | 5,50 | 78 | 86 | 93 | 7145 | 1200 | 4205 | 4,82 |
| 4 | 3~ | 400 | 50 | 2800 | 3429 | 5,23 | 82 | 89 | 95 | 4405 | 1600 | 2590 | 6,42 |
| 5 | 3~ | 400 | 50 | 2455 | 1579 | 2,51 | 87 | 94 | 96 | 9980 | 0 | 5875 | 0,00 |
| 6 | 3~ | 400 | 50 | 2375 | 2009 | 3,13 | 79 | 87 | 91 | 8120 | 441 | 4780 | 1,77 |
| 7 | 3~ | 400 | 50 | 2360 | 2200 | 3,42 | 73 | 81 | 88 | 6025 | 855 | 3545 | 3,43 |
| 8 | 3~ | 400 | 50 | 2380 | 2133 | 3,32 | 77 | 84 | 89 | 3750 | 1163 | 2210 | 4,67 |
| 9 | 3~ | 400 | 50 | 1770 | 665 | 1,24 | 78 | 85 | 88 | 7175 | 0 | 4220 | 0,00 |
| 10 | 3~ | 400 | 50 | 1745 | 846 | 1,48 | 70 | 78 | 83 | 5925 | 236 | 3485 | 0,95 |
| 11 | 3~ | 400 | 50 | 1735 | 931 | 1,59 | 65 | 73 | 80 | 4430 | 463 | 2610 | 1,86 |
| 12 | 3~ | 400 | 50 | 1740 | 891 | 1,54 | 68 | 75 | 81 | 2740 | 620 | 1610 | 2,49 |
| 13 | 3~ | 400 | 50 | 1090 | 199 | 0,56 | 65 | 73 | 75 | 4340 | 0 | 2555 | 0,00 |
| 14 | 3~ | 400 | 50 | 1075 | 237 | 0,62 | 58 | 66 | 72 | 3600 | 87 | 2120 | 0,35 |
| 15 | 3~ | 400 | 50 | 1070 | 256 | 0,66 | 54 | 62 | 68 | 2710 | 173 | 1595 | 0,69 |
| 16 | 3~ | 400 | 50 | 1070 | 248 | 0,64 | 55 | 62 | 69 | 1685 | 235 | 990 | 0,94 |

Wiring = Wiring. U = Supply voltage. f = Frequency. n = Speed (RPM). P_{ed} = Absorbed power. I = Absorbed current. LpA_{in} = Sound pressure level on suction side. LwA_{in} = Sound power level on suction side. LwA_{out} = Sound power level on pressure side. q_v = Volume flow rate. p_{fs} = Pressure increase.

U SERIES

Modular air handling unit

UPB 7500 - K3G450PA3161



| | Wiring | U | F | n | P _{ed} | I | LpA _{in} | LwA _{in} | LwA _{out} | q _v | p _{fs} | q _v | p _{fs} |
|----|--------|-----|----|-------------------|-----------------|------|-------------------|-------------------|--------------------|----------------|-----------------|----------------|-----------------|
| | | V | Hz | min ⁻¹ | W | A | dB(A) | dB(A) | dB(A) | m³/h | Pa | cfm | in. wg |
| 1 | 3~ | 400 | 50 | 2480 | 2775 | 4.26 | 91 | 99 | 99 | 14310 | 0 | 8425 | 0.00 |
| 2 | 3~ | 400 | 50 | 2480 | 3925 | 5.98 | 85 | 92 | 95 | 11705 | 600 | 6890 | 2.41 |
| 3 | 3~ | 400 | 50 | 2480 | 4450 | 6.80 | 78 | 85 | 91 | 8850 | 1200 | 5210 | 4.82 |
| 4 | 3~ | 400 | 50 | 2480 | 4413 | 6.71 | 82 | 89 | 94 | 5940 | 1600 | 3495 | 6.42 |
| 5 | 3~ | 400 | 50 | 2365 | 2421 | 3.74 | 90 | 97 | 98 | 13670 | 0 | 8045 | 0.00 |
| 6 | 3~ | 400 | 50 | 2260 | 2968 | 4.56 | 82 | 89 | 93 | 10695 | 507 | 6295 | 2.04 |
| 7 | 3~ | 400 | 50 | 2225 | 3286 | 5.03 | 75 | 83 | 89 | 8005 | 980 | 4710 | 3.93 |
| 8 | 3~ | 400 | 50 | 2230 | 3210 | 4.91 | 80 | 86 | 91 | 5365 | 1305 | 3155 | 5.24 |
| 9 | 3~ | 400 | 50 | 1815 | 1132 | 1.87 | 84 | 91 | 92 | 10390 | 0 | 6115 | 0.00 |
| 10 | 3~ | 400 | 50 | 1775 | 1451 | 2.33 | 76 | 83 | 87 | 8355 | 309 | 4920 | 1.24 |
| 11 | 3~ | 400 | 50 | 1755 | 1624 | 2.58 | 69 | 77 | 82 | 6310 | 609 | 3715 | 2.44 |
| 12 | 3~ | 400 | 50 | 1755 | 1574 | 2.50 | 72 | 80 | 85 | 4215 | 806 | 2480 | 3.24 |
| 13 | 3~ | 400 | 50 | 1240 | 422 | 0.92 | 73 | 81 | 84 | 6950 | 0 | 4090 | 0.00 |
| 14 | 3~ | 400 | 50 | 1220 | 518 | 1.05 | 66 | 73 | 77 | 5720 | 145 | 3365 | 0.58 |
| 15 | 3~ | 400 | 50 | 1215 | 578 | 1.14 | 60 | 68 | 73 | 4350 | 289 | 2560 | 1.16 |
| 16 | 3~ | 400 | 50 | 1215 | 567 | 1.12 | 62 | 70 | 75 | 2915 | 386 | 1715 | 1.55 |

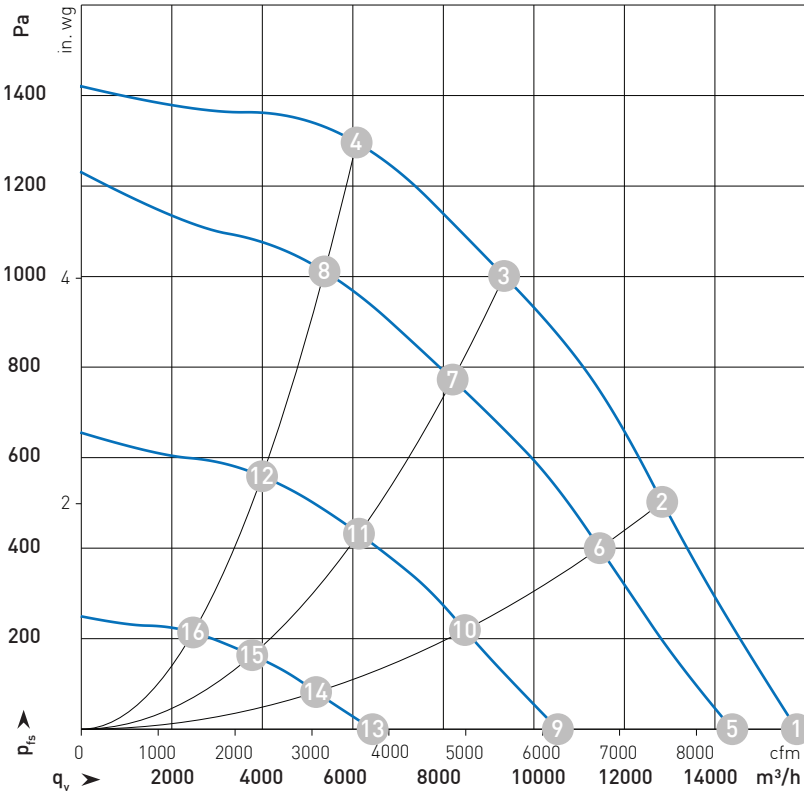
Wiring = Wiring. U = Supply voltage. f = Frequency. n = Speed (RPM). P_{ed} = Absorbed power. I = Absorbed current. LpA_{in} = Sound pressure level on suction side. LwA_{in} = Sound power level on suction side. LwA_{out} = Sound power level on pressure side. q_v = Volume flow rate. p_{fs} = Pressure increase.



Ventilation

Comfort and performance
at maximum efficiency
energy

UPB 9000 - K3G500PB2461



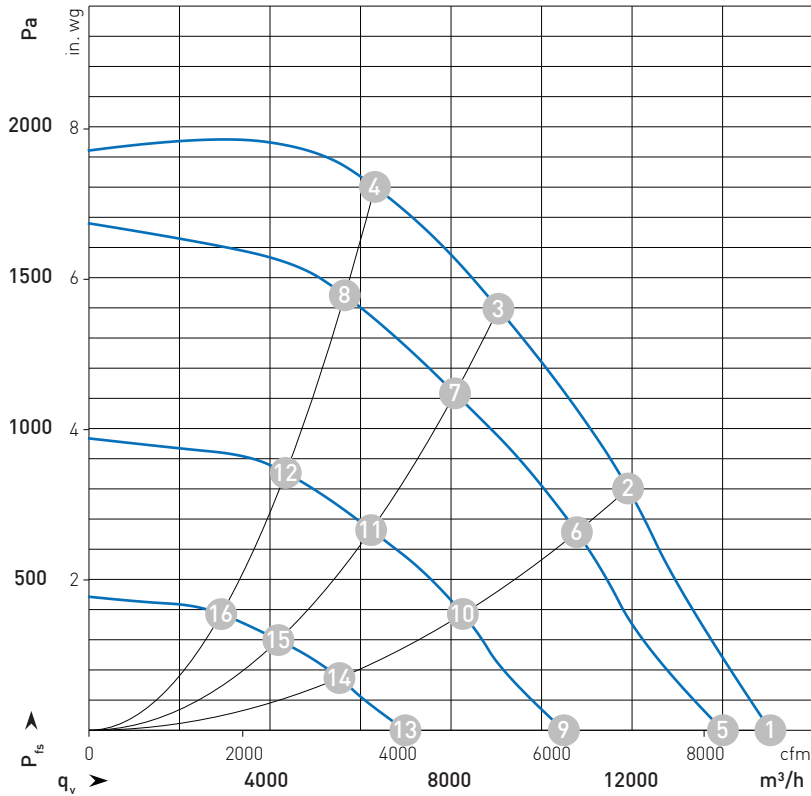
| | Wiring | U | F | n | P _{ed} | I | LpA _{in} | LwA _{in} | LwA _{out} | q _v | p _{fs} | q _v | p _{fs} |
|----|--------|-----|----|-------------------|-----------------|------|-------------------|-------------------|--------------------|-------------------|-----------------|----------------|-----------------|
| | | V | Hz | min ⁻¹ | W | A | dB(A) | dB(A) | dB(A) | m ³ /h | Pa | cfm | in. wg |
| 1 | 3~ | 400 | 50 | 2000 | 2410 | 3.73 | 94 | 101 | 101 | 15810 | 0 | 9305 | 0.00 |
| 2 | 3~ | 400 | 50 | 2000 | 3374 | 5.15 | 86 | 93 | 94 | 12835 | 500 | 7555 | 2.01 |
| 3 | 3~ | 400 | 50 | 2000 | 3900 | 6.00 | 79 | 86 | 89 | 9340 | 1000 | 5500 | 4.01 |
| 4 | 3~ | 400 | 50 | 2000 | 3748 | 5.71 | 82 | 88 | 91 | 6085 | 1300 | 3580 | 5.22 |
| 5 | 3~ | 400 | 50 | 1835 | 1847 | 2.90 | 91 | 99 | 99 | 14385 | 0 | 8465 | 0.00 |
| 6 | 3~ | 400 | 50 | 1795 | 2389 | 3.70 | 83 | 91 | 92 | 11455 | 400 | 6740 | 1.61 |
| 7 | 3~ | 400 | 50 | 1765 | 2636 | 4.07 | 75 | 82 | 86 | 8205 | 773 | 4830 | 3.10 |
| 8 | 3~ | 400 | 50 | 1780 | 2588 | 3.99 | 78 | 85 | 89 | 5375 | 1012 | 3160 | 4.06 |
| 9 | 3~ | 400 | 50 | 1355 | 812 | 1.44 | 83 | 91 | 93 | 10530 | 0 | 6200 | 0.00 |
| 10 | 3~ | 400 | 50 | 1335 | 1038 | 1.75 | 75 | 83 | 85 | 8475 | 219 | 4990 | 0.88 |
| 11 | 3~ | 400 | 50 | 1320 | 1143 | 1.89 | 67 | 75 | 79 | 6135 | 432 | 3610 | 1.73 |
| 12 | 3~ | 400 | 50 | 1325 | 1117 | 1.86 | 69 | 78 | 81 | 3995 | 559 | 2350 | 2.24 |
| 13 | 3~ | 400 | 50 | 835 | 226 | 0.61 | 71 | 80 | 80 | 6435 | 0 | 3790 | 0.00 |
| 14 | 3~ | 400 | 50 | 820 | 277 | 0.69 | 62 | 71 | 73 | 5190 | 82 | 3055 | 0.33 |
| 15 | 3~ | 400 | 50 | 820 | 300 | 0.73 | 55 | 63 | 67 | 3775 | 164 | 2220 | 0.66 |
| 16 | 3~ | 400 | 50 | 815 | 299 | 0.73 | 56 | 63 | 69 | 2470 | 214 | 1455 | 0.86 |

Wiring = Wiring. U = Supply voltage. f = Frequency. n = Speed (RPM). P_{ed} = Absorbed power. I = Absorbed current. LpA_{in} = Sound pressure level on suction side. LwA_{in} = Sound power level on suction side. LwA_{out} = Sound power level on pressure side. q_v = Volume flow rate. p_{fs} = Pressure increase.

U SERIES

Modular air handling unit

UPB 18000 - 2 x K3G450PB2405*



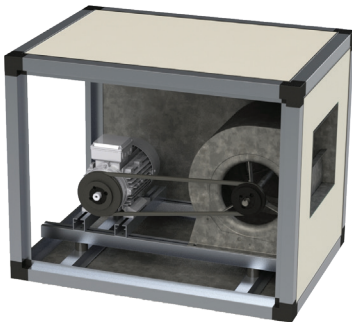
* Referring to the graph, double the flow rates

| | U | F | n | P _{ed} | I | LpA _{in} | LwA _{in} | LwA _{out} | q _v | p _{fs} | q _v | p _{fs} |
|----|-----|----|-------------------|-----------------|------|-------------------|-------------------|--------------------|-------------------|-----------------|----------------|-----------------|
| | V | Hz | min ⁻¹ | W | A | dB(A) | dB(A) | dB(A) | m ³ /h | Pa | cfm | in. wg |
| 1 | 400 | 50 | 2600 | 3067 | 4,78 | 95 | 102 | 102 | 15055 | 0 | 8860 | 0,00 |
| 2 | 400 | 50 | 2600 | 4640 | 7,13 | 85 | 92 | 97 | 11910 | 800 | 7010 | 3,21 |
| 3 | 400 | 50 | 2600 | 5250 | 8,00 | 80 | 87 | 96 | 9045 | 1400 | 5325 | 5,62 |
| 4 | 400 | 50 | 2600 | 5141 | 7,89 | 84 | 91 | 97 | 6320 | 1800 | 3720 | 7,23 |
| 5 | 400 | 50 | 2430 | 2502 | 3,95 | 92 | 99 | 100 | 14010 | 0 | 8245 | 0,00 |
| 6 | 400 | 50 | 2360 | 3460 | 5,36 | 82 | 89 | 96 | 10780 | 660 | 6345 | 2,65 |
| 7 | 400 | 50 | 2335 | 3767 | 5,81 | 77 | 84 | 95 | 8090 | 1117 | 4760 | 4,48 |
| 8 | 400 | 50 | 2345 | 3677 | 5,68 | 80 | 87 | 95 | 5655 | 1445 | 3325 | 5,80 |
| 9 | 400 | 50 | 1840 | 1122 | 2,04 | 84 | 92 | 94 | 10495 | 0 | 6175 | 0,00 |
| 10 | 400 | 50 | 1815 | 1598 | 2,67 | 75 | 82 | 90 | 8260 | 388 | 4865 | 1,56 |
| 11 | 400 | 50 | 1800 | 1761 | 2,89 | 71 | 78 | 89 | 6235 | 663 | 3670 | 2,66 |
| 12 | 400 | 50 | 1805 | 1708 | 2,82 | 74 | 81 | 89 | 4350 | 855 | 2560 | 3,43 |
| 13 | 400 | 50 | 1235 | 402 | 0,84 | 74 | 81 | 85 | 6990 | 0 | 4115 | 0,00 |
| 14 | 400 | 50 | 1215 | 543 | 1,08 | 64 | 71 | 77 | 5535 | 176 | 3260 | 0,71 |
| 15 | 400 | 50 | 1210 | 594 | 1,17 | 62 | 69 | 76 | 4185 | 299 | 2465 | 1,20 |
| 16 | 400 | 50 | 121 | 574 | 1,14 | 64 | 71 | 77 | 2920 | 386 | 1720 | 1,55 |

U = Supply voltage. f = Frequency. n = Speed (RPM). P_{ed} = Absorbed power. I = Absorbed current. LpA_{in} = Sound pressure level on suction side. LwA_{in} = Sound power level on suction side. LwA_{out} = Sound power level on pressure side. q_v = Volume flow rate. p_{fs} = Pressure increase.



FAN MODULE UTR



Forward curved blade fan unit with belt drive.

Galvanized steel centrifugal fan with forward curved blades, double inlet, belt-driven.

Rubber anti-vibration mounts and anti-vibration coupling on the discharge outlet. Belt-driven execution with maintenance-free bearings mounted in stamped steel bearing frames.

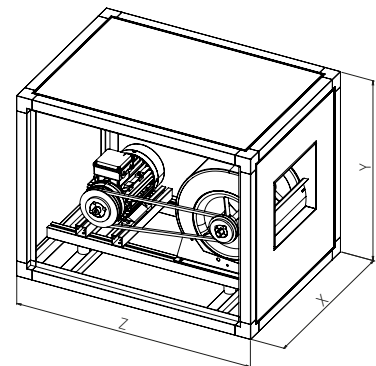
Three-phase asynchronous 4-pole motors with squirrel cage rotor, class IE3, in 400 V - 3ph - 50/60 Hz execution, IP55 protection. Available in dual polarity double winding 4/6-pole 2-speed version. SPA pulley transmission coupled with TAPER BUSH to shafts. Belt tensioning slide on aluminum base.

Operating temperature range -20 ÷ +60 °C.

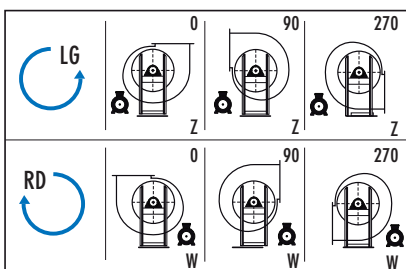
Represents the most economical and widely used solution in the restaurant and catering sector, where the extraction load remains constant over time. With the appropriate transmission ratio, it will be possible to vary the desired operating point.

DIMENSIONS

| Size | Type box | Wt. kg | X mm | Y mm | Z mm |
|-------|----------|--------|------|------|------|
| 3000 | 2 | 70 | 655 | 715 | 900 |
| 4500 | 2 | 90 | 945 | 715 | 1000 |
| 6000 | 2 | 120 | 1250 | 715 | 1000 |
| 7500 | 2 | 140 | 1540 | 715 | 1000 |
| 9000 | 2 | 160 | 1250 | 1005 | 1000 |
| 12000 | 2 | 190 | 1250 | 1310 | 1000 |



ORIENTATIONS



STANDARD orientation 3000-4500-9000-12000: LG90.

STANDARD orientation 6000-7500: RD270.

NOTE - At the time of ordering, please communicate the required operating point and orientation.

U SERIES

Modular air handling unit

QUICK SELECTION TABLE

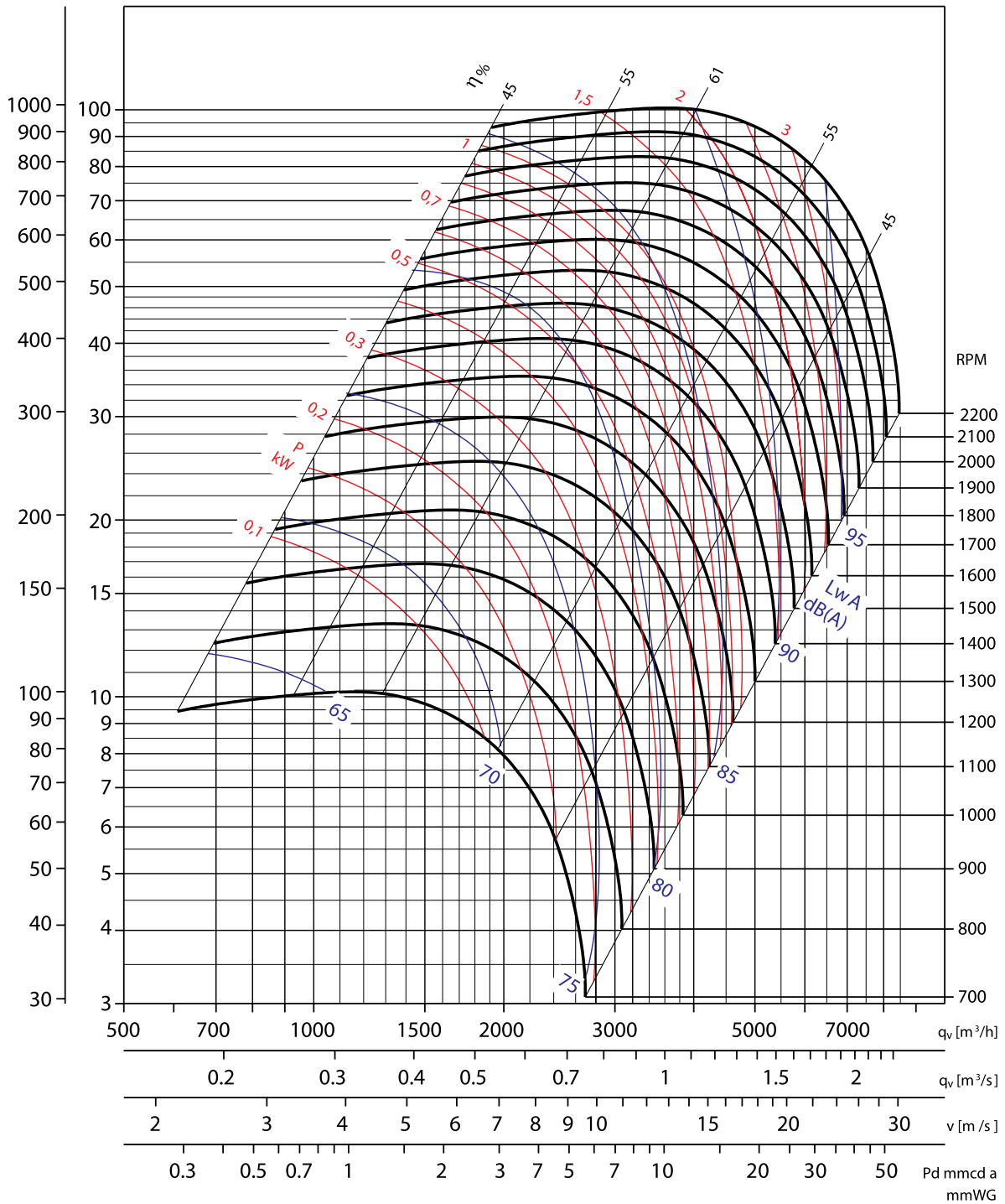
| Model | Fan | Flow rate m ³ h | Max. total pressure Pa | Power nominal kW | Power Duty point kW | RPM RPM | Power sound dB |
|-------|-------|-------------------------------|---------------------------|------------------------|---------------------------|------------|----------------------|
| 3000 | 9/9 | 3000 | 850 | 1,5 | 1,4 | 2014 | 65 |
| 4500 | 10/10 | 4500 | 850 | 2,2 | 2,1 | 1743 | 67 |
| 6000 | 12/12 | 6000 | 800 | 3 | 2,7 | 1460 | 68 |
| 7500 | 12/12 | 7500 | 850 | 4 | 3,7 | 1479 | 69 |
| 9000 | 15/15 | 9000 | 750 | 4 | 3,7 | 1167 | 68 |
| 12000 | 18/18 | 12000 | 750 | 5,5 | 4,9 | 978 | 68 |



CHARACTERISTIC CURVES

UTR 3000 - 9/9

p_{sf} (Pa) p_{sf} (mmcda)



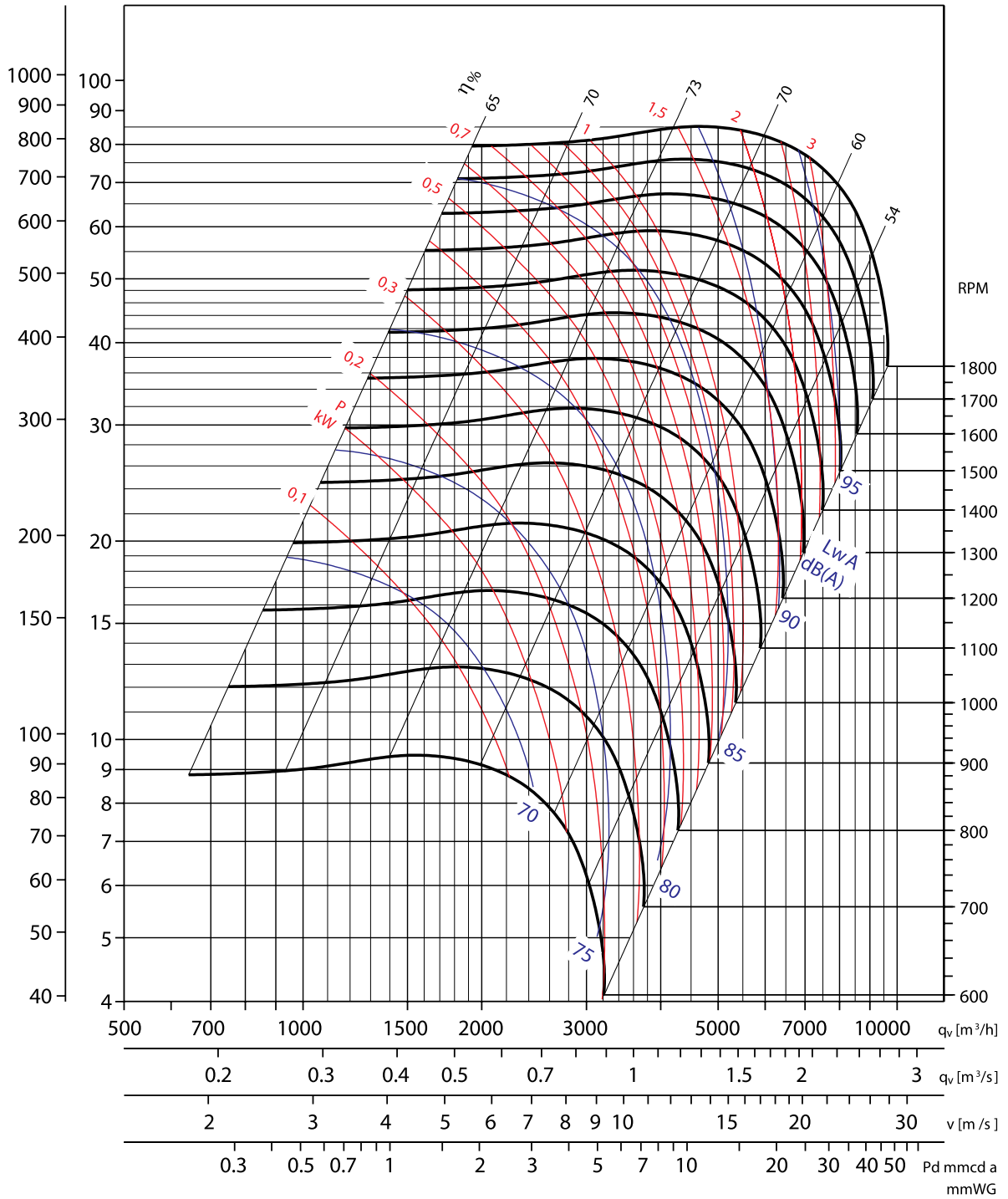
| | | | | | | | | |
|-------------|----|-----|-----|-----|------|------|------|------|
| Hz | 63 | 125 | 250 | 500 | 1000 | 2000 | 4000 | 8000 |
| Δ dB | 25 | 21 | 12 | 10 | 4.1 | 5.5 | 9 | 16 |

U SERIES

Modular air handling unit

UTR 4500 - 10/10

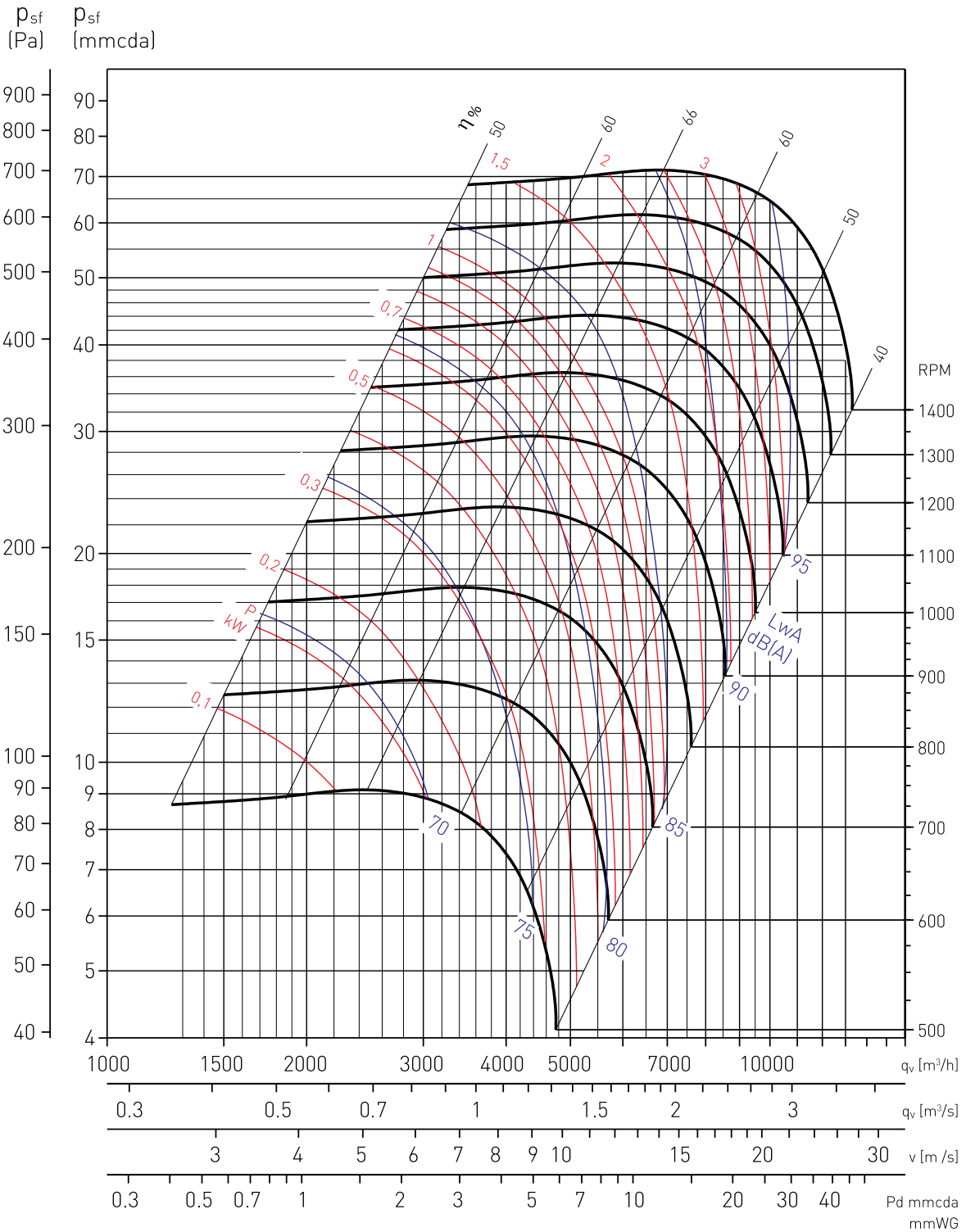
p_{sf} (Pa)
 p_{sf} (mmcda)



| | | | | | | | | |
|-------------|----|-----|-----|-----|------|------|------|------|
| Hz | 63 | 125 | 250 | 500 | 1000 | 2000 | 4000 | 8000 |
| Δ dB | 31 | 21 | 14 | 9 | 3.6 | 6.2 | 9 | 17 |



UTR 6000/ UTR 7500 - 12/12

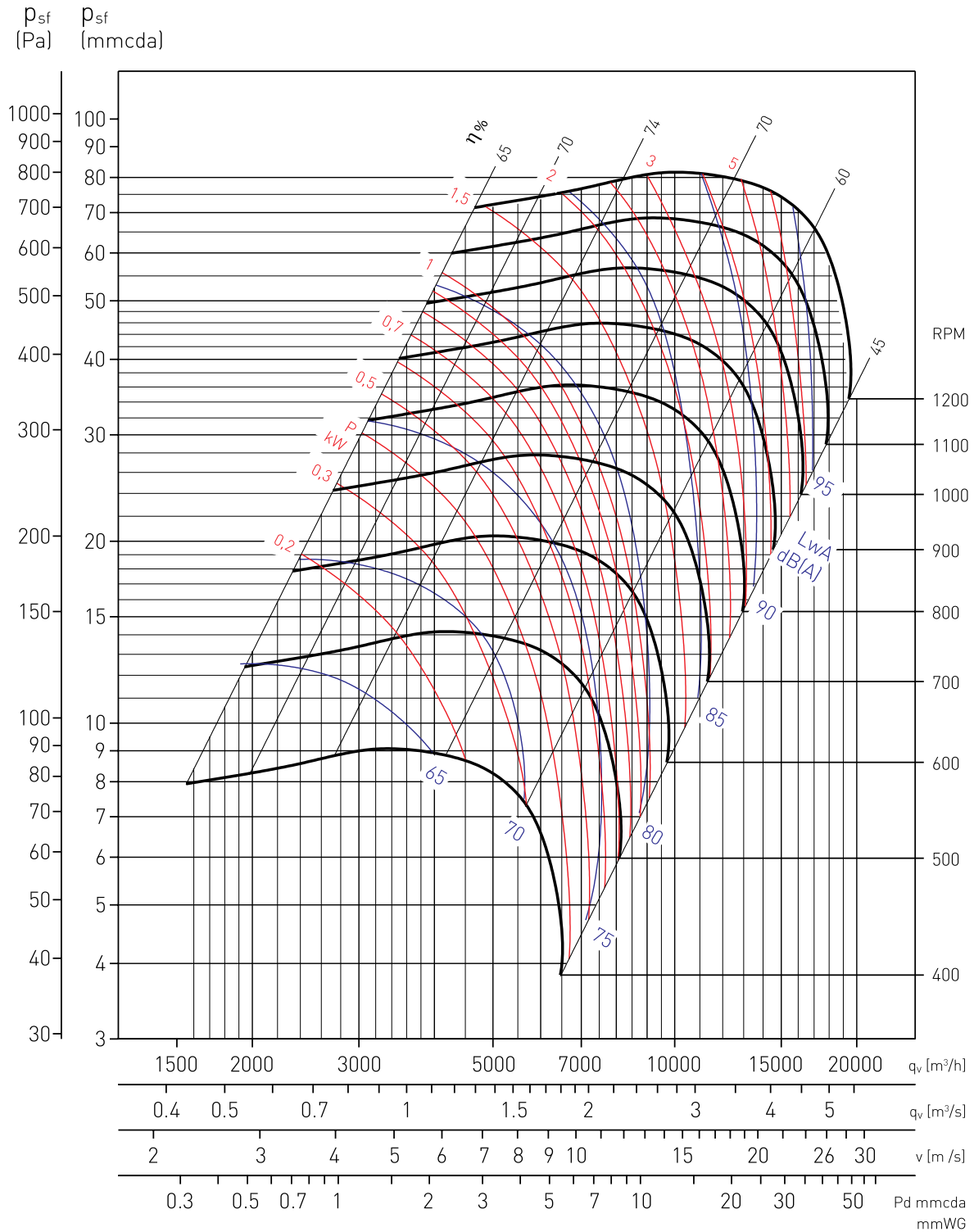


| | | | | | | | | |
|-------------|----|-----|-----|-----|------|------|------|------|
| Hz | 63 | 125 | 250 | 500 | 1000 | 2000 | 4000 | 8000 |
| Δ dB | 30 | 21 | 15 | 8 | 3.8 | 5.7 | 10 | 19 |

U SERIES

Modular air handling unit

UTR 9000 - 15/15



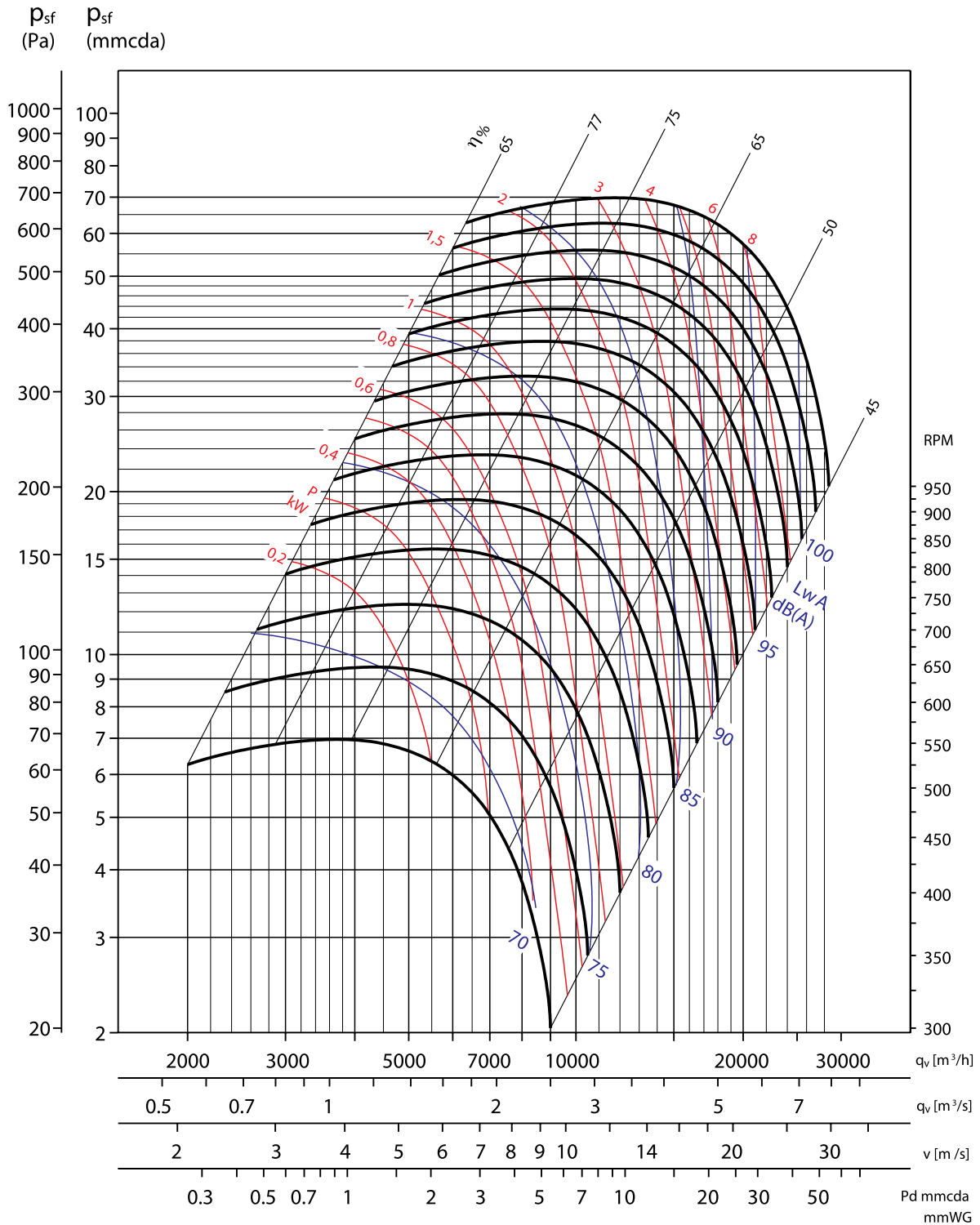
| | | | | | | | | |
|-------------|------|------|------|-----|------|------|------|------|
| Hz | 63 | 125 | 250 | 500 | 1000 | 2000 | 4000 | 8000 |
| Δ dB | 24.6 | 15.1 | 14.2 | 8.2 | 4.8 | 5.8 | 9.6 | 15.5 |



Ventilation

Comfort and performance
at maximum efficiency
energy

UTR 12000 - 18/18

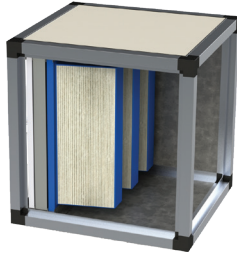


| | | | | | | | | |
|-------------|----|-----|-----|-----|------|------|------|------|
| Hz | 63 | 125 | 250 | 500 | 1000 | 2000 | 4000 | 8000 |
| Δ dB | 24 | 17 | 13 | 5 | 4.9 | 7 | 10 | 20 |

U SERIES

Modular air handling unit

FILTER MODULE UFT



Filter unit ideal for the civil air conditioning sector and air filtration in industrial processes. Capable of retaining air impurities, improving air quality.

F13 Filter class (EN 779) G2 in flat section aluminium wire (ISO coarse 25%).

F12 Filter class (EN 779) G4 pleated polyester fibre (ISO coarse 75%).

F18 Filter class (EN 779) F8 (ISO ePm1 60%) 4 rigid bags.

QUICK SELECTION TABLE

| Model/Flow rate | F13 | | | | F12 | | |
|-------------------|----------|------------|-------------------|--|----------|------------|-------------------|
| | Quantity | Dimensions | Efficiency | Pressure drop medium / final recommended | Quantity | Dimensions | Efficiency |
| m ³ /h | N. | mm | | Pa | N. | mm | |
| 3000 | 1 | 592x592x22 | G2 ISO coarse 25% | 80 / 150 | 1 | 592x592x48 | G4 ISO coarse 75% |
| 4500 | 1 | 592x592x22 | G2 ISO coarse 25% | 80 / 150 | 1 | 592x592x48 | G4 ISO coarse 75% |
| | 1 | 592x287x22 | G2 ISO coarse 25% | 80 / 150 | 1 | 592x287x48 | G4 ISO coarse 75% |
| 6000 | 2 | 592x592x22 | G2 ISO coarse 25% | 80 / 150 | 2 | 592x592x48 | G4 ISO coarse 75% |
| 7500 | 2 | 592x592x22 | G2 ISO coarse 25% | 80 / 150 | 2 | 592x592x48 | G4 ISO coarse 75% |
| | 1 | 592x287x22 | G2 ISO coarse 25% | 80 / 150 | 1 | 592x287x48 | G4 ISO coarse 75% |
| 9000 | 2 | 592x592x22 | G2 ISO coarse 25% | 80 / 150 | 2 | 592x592x48 | G4 ISO coarse 75% |
| | 2 | 592x287x22 | G2 ISO coarse 25% | 80 / 150 | 2 | 592x287x48 | G4 ISO coarse 75% |
| 12000 | 4 | 592x592x22 | G2 ISO coarse 25% | 80 / 150 | 4 | 592x592x48 | G4 ISO coarse 75% |
| 18000 | 6 | 592x592x22 | G2 ISO coarse 25% | 80 / 150 | 6 | 592x592x48 | G4 ISO coarse 75% |

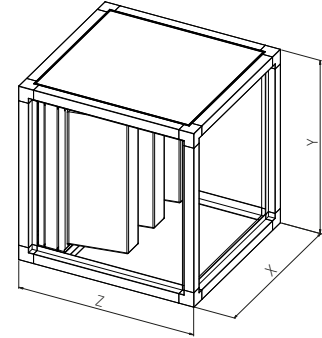


Ventilation

Comfort and performance
at maximum efficiency
energy

DIMENSIONS

| Size | Type box | Wt. kg | X mm | Y mm | Z mm |
|-------|----------|--------|------|------|------|
| 3000 | 1 | 39 | 655 | 715 | 700 |
| 4500 | 1 | 51 | 945 | 715 | 700 |
| 6000 | 1 | 61 | 1250 | 715 | 700 |
| 7500 | 1 | 74 | 1540 | 715 | 700 |
| 9000 | 1 | 83 | 1250 | 1005 | 700 |
| 12000 | 1 | 86 | 1250 | 1310 | 700 |
| 18000 | 1 | 130 | 1845 | 1310 | 700 |

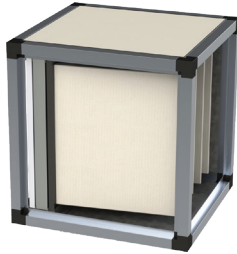


| Pressure drop medium / final recommended Pa | Quantity N. | Dimensions mm | F18/4 95% | Pressure drop medium / final recommended Pa | Pressure total average load Pa | Pressure load total final Pa |
|--|----------------|------------------|-----------------|--|-----------------------------------|---------------------------------|
| | | | Efficiency | | | |
| 125 / 200 | 1 | 592x592x292 | F8 ISO ePm1 60% | 330 / 600 | 535 | 950 |
| 125 / 200 | 1 | 592x592x292 | F8 ISO ePm1 60% | 330 / 600 | 535 | 950 |
| 125 / 200 | 1 | 592x287x292 | F8 ISO ePm1 60% | 330 / 600 | 535 | 950 |
| 125 / 200 | 2 | 592x592x292 | F8 ISO ePm1 60% | 330 / 600 | 535 | 950 |
| 125 / 200 | 2 | 592x592x292 | F8 ISO ePm1 60% | 330 / 600 | 535 | 950 |
| 125 / 200 | 1 | 592x287x292 | F8 ISO ePm1 60% | 330 / 600 | 535 | 950 |
| 125 / 200 | 2 | 592x592x292 | F8 ISO ePm1 60% | 330 / 600 | 535 | 950 |
| 125 / 200 | 2 | 592x287x292 | F8 ISO ePm1 60% | 330 / 600 | 535 | 950 |
| 125 / 200 | 4 | 592x592x292 | F8 ISO ePm1 60% | 330 / 600 | 535 | 950 |
| 125 / 200 | 6 | 592x592x292 | F8 ISO ePm1 60% | 330 / 600 | 535 | 950 |

U SERIES

Modular air handling unit

UFTF



Filter unit ideal for the civil air conditioning sector and air filtration in industrial processes. Represents the right compromise between cost and filtration efficiency.

F13 Filter class (EN 779) G2 in flat section aluminium wire (ISO coarse 25%).

F12 Filter class (EN 779) G4 pleated polyester fibre (ISO coarse 75%).

F16 S Filter class (EN 779) F9 (ISO ePm1 85%) 12 flexible bags thickness 380 mm.

QUICK SELECTION TABLE

| Model/Flow rate | F13 | | | | F12 | | |
|-------------------|----------|------------|-------------------|---|----------|------------|-------------------|
| | Quantity | Dimensions | Efficiency | Pressure drop average / recommended final | Quantity | Dimensions | Efficiency |
| m ³ /h | N. | mm | | Pa | N. | mm | |
| 3000 | 1 | 592x592x22 | G2 ISO coarse 25% | 80 / 150 | 1 | 592x592x48 | G4 ISO coarse 75% |
| 4500 | 1 | 592x592x22 | G2 ISO coarse 25% | 80 / 150 | 1 | 592x592x48 | G4 ISO coarse 75% |
| | 1 | 592x287x22 | G2 ISO coarse 25% | 80 / 150 | 1 | 592x287x48 | G4 ISO coarse 75% |
| 6000 | 2 | 592x592x22 | G2 ISO coarse 25% | 80 / 150 | 2 | 592x592x48 | G4 ISO coarse 75% |
| 7500 | 2 | 592x592x22 | G2 ISO coarse 25% | 80 / 150 | 2 | 592x592x48 | G4 ISO coarse 75% |
| | 1 | 592x287x22 | G2 ISO coarse 25% | 80 / 150 | 1 | 592x287x48 | G4 ISO coarse 75% |
| 9000 | 2 | 592x592x22 | G2 ISO coarse 25% | 80 / 150 | 2 | 592x592x48 | G4 ISO coarse 75% |
| | 2 | 592x287x22 | G2 ISO coarse 25% | 80 / 150 | 2 | 592x287x48 | G4 ISO coarse 75% |
| 12000 | 4 | 592x592x22 | G2 ISO coarse 25% | 80 / 150 | 4 | 592x592x48 | G4 ISO coarse 75% |
| 18000 | 6 | 592x592x22 | G2 ISO coarse 25% | 80 / 150 | 6 | 592x592x48 | G4 ISO coarse 75% |

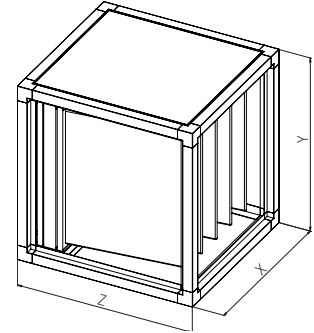


Ventilation

Comfort and performance
at maximum efficiency
energy

DIMENSIONS

| Size | Type box | Wt. kg | X mm | Y mm | Z mm |
|-------|----------|--------|------|------|------|
| 3000 | 1 | 39 | 655 | 715 | 700 |
| 4500 | 1 | 51 | 945 | 715 | 700 |
| 6000 | 1 | 61 | 1250 | 715 | 700 |
| 7500 | 1 | 74 | 1540 | 715 | 700 |
| 9000 | 1 | 83 | 1250 | 1005 | 700 |
| 12000 | 1 | 86 | 1250 | 1310 | 700 |
| 18000 | 1 | 130 | 1845 | 1310 | 700 |

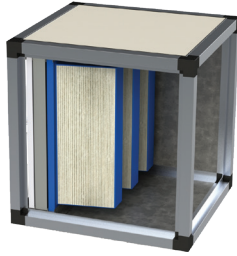


| Pressure drop medium / final recommended Pa | Quantity N. | Dimensions mm | F16 90 S | Pressure drop medium / final recommended Pa | Pressure total average load Pa | Pressure load total final Pa |
|--|----------------|------------------|-----------------|--|-----------------------------------|---------------------------------|
| | | | Efficiency | | | |
| 125 / 200 | 1 | 592x592x380 | F9 ISO ePm1 85% | 310 / 450 | 515 | 800 |
| 125 / 200 | 1 | 592x592x380 | F9 ISO ePm1 85% | 310 / 450 | 515 | 800 |
| 125 / 200 | 1 | 592x287x380 | F9 ISO ePm1 85% | 310 / 450 | 515 | 800 |
| 125 / 200 | 2 | 592x592x380 | F9 ISO ePm1 85% | 310 / 450 | 515 | 800 |
| 125 / 200 | 2 | 592x592x380 | F9 ISO ePm1 85% | 310 / 450 | 515 | 800 |
| 125 / 200 | 1 | 592x287x380 | F9 ISO ePm1 85% | 310 / 450 | 515 | 800 |
| 125 / 200 | 2 | 592x592x380 | F9 ISO ePm1 85% | 310 / 450 | 515 | 800 |
| 125 / 200 | 2 | 592x287x380 | F9 ISO ePm1 85% | 310 / 450 | 515 | 800 |
| 125 / 200 | 4 | 592x592x380 | F9 ISO ePm1 85% | 310 / 450 | 515 | 800 |
| 125 / 200 | 6 | 592x592x380 | F9 ISO ePm1 85% | 310 / 450 | 515 | 800 |

U SERIES

Modular air handling unit

UFTH



Filter unit ideal for the hospital and chemical/biological research sector. Capable of retaining not only fine dust but also viruses and bacteria thanks to its extremely high efficiency.

F13 Filter class (EN 779) **G2** in flat section aluminium wire (ISO coarse 25%).

F12 Filter class (EN 779) **G4** pleated polyester fibre (ISO coarse 75%).

F18H Filter class (EN 779) **H13** (ISO ePm1 99%) 4 rigid bags.

QUICK SELECTION TABLE

| Model/Flow rate | F13 | | | | F12 | | |
|-----------------|----------|------------|-------------------|---|----------|------------|-------------------|
| | Quantity | Dimensions | Efficiency | Pressure drop average / recommended final | Quantity | Dimensions | Efficiency |
| | N. | mm | | Pa | N. | mm | |
| 3000 | 1 | 592x592x22 | G2 ISO coarse 25% | 80 / 150 | 1 | 592x592x48 | G4 ISO coarse 75% |
| 4500 | 1 | 592x592x22 | G2 ISO coarse 25% | 80 / 150 | 1 | 592x592x48 | G4 ISO coarse 75% |
| | 1 | 592x287x22 | G2 ISO coarse 25% | 80 / 150 | 1 | 592x287x48 | G4 ISO coarse 75% |
| 6000 | 2 | 592x592x22 | G2 ISO coarse 25% | 80 / 150 | 2 | 592x592x48 | G4 ISO coarse 75% |
| 7500 | 2 | 592x592x22 | G2 ISO coarse 25% | 80 / 150 | 2 | 592x592x48 | G4 ISO coarse 75% |
| | 1 | 592x287x22 | G2 ISO coarse 25% | 80 / 150 | 1 | 592x287x48 | G4 ISO coarse 75% |
| 9000 | 2 | 592x592x22 | G2 ISO coarse 25% | 80 / 150 | 2 | 592x592x48 | G4 ISO coarse 75% |
| | 2 | 592x287x22 | G2 ISO coarse 25% | 80 / 150 | 2 | 592x287x48 | G4 ISO coarse 75% |
| 12000 | 4 | 592x592x22 | G2 ISO coarse 25% | 80 / 150 | 4 | 592x592x48 | G4 ISO coarse 75% |
| 18000 | 6 | 592x592x22 | G2 ISO coarse 25% | 80 / 150 | 6 | 592x592x48 | G4 ISO coarse 75% |

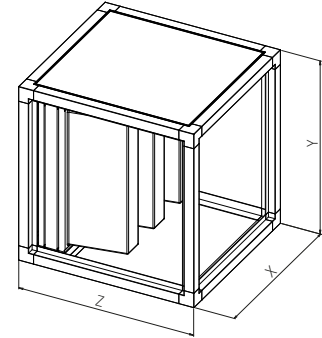


Ventilation

Comfort and performance
at maximum efficiency
energy

DIMENSIONS

| Size | Type box | Wt. kg | X mm | Y mm | Z mm |
|-------|----------|--------|------|------|------|
| 3000 | 1 | 39 | 655 | 715 | 700 |
| 4500 | 1 | 51 | 945 | 715 | 700 |
| 6000 | 1 | 61 | 1250 | 715 | 700 |
| 7500 | 1 | 74 | 1540 | 715 | 700 |
| 9000 | 1 | 83 | 1250 | 1005 | 700 |
| 12000 | 1 | 86 | 1250 | 1310 | 700 |
| 18000 | 1 | 130 | 1845 | 1310 | 700 |

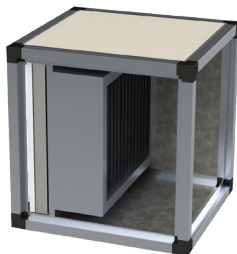


| Pressure drop medium / final recommended Pa | Quantity N. | Dimensions mm | F10/4 H13 | Pressure drop medium / final recommended Pa | Pressure load total medium Pa | Pressure load total final Pa |
|--|----------------|------------------|------------------|--|----------------------------------|---------------------------------|
| | | | Efficiency | | | |
| 125 / 200 | 1 | 592x592x292 | H13 ISO ePm1 99% | 425 / 600 | 630 | 950 |
| 125 / 200 | 1 | 592x592x292 | H13 ISO ePm1 99% | 425 / 600 | 630 | 950 |
| 125 / 200 | 1 | 592x287x292 | H13 ISO ePm1 99% | 425 / 600 | 630 | 950 |
| 125 / 200 | 2 | 592x592x292 | H13 ISO ePm1 99% | 425 / 600 | 630 | 950 |
| 125 / 200 | 2 | 592x592x292 | H13 ISO ePm1 99% | 425 / 600 | 630 | 950 |
| 125 / 200 | 1 | 592x287x292 | H13 ISO ePm1 99% | 425 / 600 | 630 | 950 |
| 125 / 200 | 2 | 592x592x292 | H13 ISO ePm1 99% | 425 / 600 | 630 | 950 |
| 125 / 200 | 2 | 592x287x292 | H13 ISO ePm1 99% | 425 / 600 | 630 | 950 |
| 125 / 200 | 4 | 592x592x292 | H13 ISO ePm1 99% | 425 / 600 | 630 | 950 |
| 125 / 200 | 6 | 592x592x292 | H13 ISO ePm1 99% | 425 / 600 | 630 | 950 |

U SERIES

Modular air handling unit

UFES



Filter unit ideal across all sectors. It is the top of filtration. Unlike conventional mechanical filtration, the electrostatic filter attracts onto its plates everything that passes through it with 95% efficiency. Advantages include extremely low pressure drop throughout the entire operating cycle. Furthermore, the filter is permanent: simply clean and rinse it with the appropriate product (see accessories) to restore it to its original condition. This makes it possible to use less powerful fans with lower electricity consumption, thus generating less noise, more reliability and long-term cost savings.

F13 Filter class (EN 779) G2 in flat section aluminium wire (ISO coarse 25%).

F12 Filter class (EN 779) G4 pleated polyester fibre (ISO coarse 75%).

FE-H Filter class (EN 779) E10 electrostatic filter (ISO ePm1 95%).

QUICK SELECTION TABLE

| Model/Flow rate | F13 | | | | F12 | | |
|-------------------|----------|------------|-------------------|---|----------|------------|-------------------|
| | Quantity | Dimensions | Efficiency | Pressure drop average / recommended final | Quantity | Dimensions | Efficiency |
| m ³ /h | N. | mm | | Pa | N. | mm | |
| 3000 | 1 | 592x592x22 | G2 ISO coarse 25% | 80 / 150 | 1 | 592x592x48 | G4 ISO coarse 75% |
| 4500 | 1 | 592x592x22 | G2 ISO coarse 25% | 80 / 150 | 1 | 592x592x48 | G4 ISO coarse 75% |
| | 1 | 592x287x22 | G2 ISO coarse 25% | 80 / 150 | 1 | 592x287x48 | G4 ISO coarse 75% |
| 6000 | 2 | 592x592x22 | G2 ISO coarse 25% | 80 / 150 | 2 | 592x592x48 | G4 ISO coarse 75% |
| 7500 | 2 | 592x592x22 | G2 ISO coarse 25% | 80 / 150 | 2 | 592x592x48 | G4 ISO coarse 75% |
| | 1 | 592x287x22 | G2 ISO coarse 25% | 80 / 150 | 1 | 592x287x48 | G4 ISO coarse 75% |
| 9000 | 2 | 592x592x22 | G2 ISO coarse 25% | 80 / 150 | 2 | 592x592x48 | G4 ISO coarse 75% |
| | 2 | 592x287x22 | G2 ISO coarse 25% | 80 / 150 | 2 | 592x287x48 | G4 ISO coarse 75% |
| 12000 | 4 | 592x592x22 | G2 ISO coarse 25% | 80 / 150 | 4 | 592x592x48 | G4 ISO coarse 75% |
| 18000 | 6 | 592x592x22 | G2 ISO coarse 25% | 80 / 150 | 6 | 592x592x48 | G4 ISO coarse 75% |

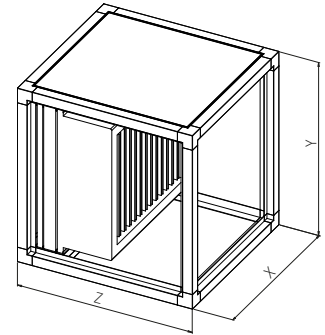


Ventilation

Comfort and performance
at maximum efficiency
energy

DIMENSIONS

| Size | Type box | Wt. kg | X mm | Y mm | Z mm |
|-------|----------|--------|------|------|------|
| 3000 | 1 | 54 | 655 | 715 | 700 |
| 4500 | 1 | 71 | 945 | 715 | 700 |
| 6000 | 1 | 91 | 1250 | 715 | 700 |
| 7500 | 1 | 107 | 1540 | 715 | 700 |
| 9000 | 1 | 125 | 1250 | 1005 | 700 |
| 12000 | 1 | 155 | 1250 | 1310 | 700 |
| 18000 | 1 | 250 | 1845 | 1310 | 700 |

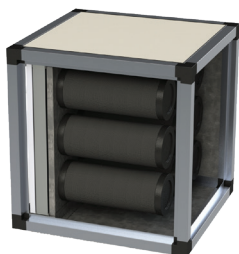


| Pressure drop medium / final recommended Pa | Quantity N. | Dimensions mm | FEH | Pressure drop medium / final recommended Pa | Pressure load total medium Pa | Pressure total final load Pa |
|--|----------------|------------------|--------------|--|----------------------------------|---------------------------------|
| | | | Efficiency | | | |
| 125 / 200 | 1 | 592x592x218 | E10 ePm1 95% | 50 / 80 | 255 | 430 |
| 125 / 200 | 1 | 592x592x218 | E10 ePm1 95% | 50 / 80 | 255 | 430 |
| 125 / 200 | 1 | 592x287x218 | E10 ePm1 95% | 50 / 80 | 255 | 430 |
| 125 / 200 | 2 | 592x592x218 | E10 ePm1 95% | 50 / 80 | 255 | 430 |
| 125 / 200 | 2 | 592x592x218 | E10 ePm1 95% | 50 / 80 | 255 | 430 |
| 125 / 200 | 1 | 592x287x218 | E10 ePm1 95% | 50 / 80 | 255 | 430 |
| 125 / 200 | 2 | 592x592x218 | E10 ePm1 95% | 50 / 80 | 255 | 430 |
| 125 / 200 | 2 | 592x287x218 | E10 ePm1 95% | 50 / 80 | 255 | 430 |
| 125 / 200 | 4 | 592x592x218 | E10 ePm1 95% | 50 / 80 | 255 | 430 |
| 125 / 200 | 6 | 592x592x218 | E10 ePm1 95% | 50 / 80 | 255 | 430 |

U SERIES

Modular air handling unit

UFC



Filter unit ideal for the industrial, catering and restaurant sector. Thanks to activated carbon cartridges, it is capable of absorbing unpleasant odors from food cooking and chemical vapors generated by welding.

F13 Filter class (EN 779) **G2** in flat section aluminium wire (ISO coarse 25%).

F12 Filter class (EN 779) **G4** pleated polyester fibre (ISO coarse 75%).

F19C Filter (CTC 45%) 160 mm cartridges (3.1 kg activated carbon each) or on request 140 mm (2.5 kg activated carbon each).

QUICK SELECTION TABLE

| Model/Flow rate | F13 | | | | F12 | | | |
|-------------------|----------|------------|-------------------|--|----------|------------|-------------------|---|
| | Quantity | Dimensions | Efficiency | Pressure drop medium / final recommended | Quantity | Dimensions | Efficiency | Loss of medium load / finale recommended Pa |
| m ³ /h | N. | mm | | Pa | N. | mm | | |
| 3000 | 1 | 592x592x22 | G2 ISO coarse 25% | 80 / 150 | 1 | 592x592x48 | G4 ISO coarse 75% | 125 / 200 |
| 4500 | 1 | 592x592x22 | G2 ISO coarse 25% | 80 / 150 | 1 | 592x592x48 | G4 ISO coarse 75% | 125 / 200 |
| | 1 | 592x287x22 | G2 ISO coarse 25% | 80 / 150 | 1 | 592x287x48 | G4 ISO coarse 75% | 125 / 200 |
| 6000 | 2 | 592x592x22 | G2 ISO coarse 25% | 80 / 150 | 2 | 592x592x48 | G4 ISO coarse 75% | 125 / 200 |
| 7500 | 2 | 592x592x22 | G2 ISO coarse 25% | 80 / 150 | 2 | 592x592x48 | G4 ISO coarse 75% | 125 / 200 |
| | 1 | 592x287x22 | G2 ISO coarse 25% | 80 / 150 | 1 | 592x287x48 | G4 ISO coarse 75% | 125 / 200 |
| 9000 | 2 | 592x592x22 | G2 ISO coarse 25% | 80 / 150 | 2 | 592x592x48 | G4 ISO coarse 75% | 125 / 200 |
| | 2 | 592x287x22 | G2 ISO coarse 25% | 80 / 150 | 2 | 592x287x48 | G4 ISO coarse 75% | 125 / 200 |
| 12000 | 4 | 592x592x22 | G2 ISO coarse 25% | 80 / 150 | 4 | 592x592x48 | G4 ISO coarse 75% | 125 / 200 |
| 18000 | 6 | 592x592x22 | G2 ISO coarse 25% | 80 / 150 | 6 | 592x592x48 | G4 ISO coarse 75% | 125 / 200 |

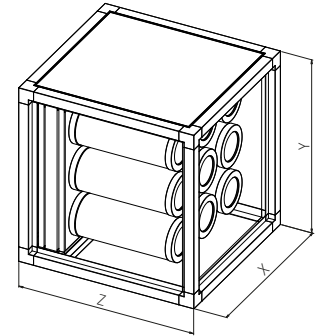


Ventilation

Comfort and performance
at maximum efficiency
energy

DIMENSIONS

| Size | Type box | Wt. kg | X mm | Y mm | Z mm |
|-------|----------|--------|------|------|------|
| 3000 | 1 | 63 | 655 | 715 | 700 |
| 4500 | 1 | 91 | 945 | 715 | 700 |
| 6000 | 1 | 118 | 1250 | 715 | 700 |
| 7500 | 1 | 142 | 1540 | 715 | 700 |
| 9000 | 1 | 164 | 1250 | 1005 | 700 |
| 12000 | 1 | 210 | 1250 | 1310 | 700 |
| 18000 | 1 | 300 | 1845 | 1310 | 700 |

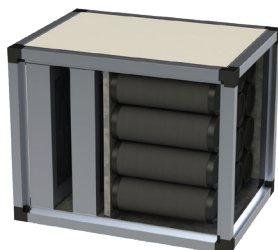


| Quantity | Plate size mm | Efficiency | F19 C | | | | | | Pressure total average load (F19 160/140) Pa | Pressure total final load (F19 160/140) Pa |
|----------|------------------|------------|-------------------|---------------|---------------|-------------------|---------------|---------------|---|---|
| | | | 160 mm cartridges | | | 140 mm cartridges | | | | |
| | | | Cartridges | Carbon active | Pressure load | Cartridges | Carbon active | Pressure load | | |
| | | | mm / N. | kg | Pa | mm / N. | kg | Pa | | |
| 1 | 592x592x24 | CTC 45% | Ø 160x400 / 9 | 3,1 | 180 | Ø 140x400 / 16 | 2,5 | 250 | 385 / 530 | 530 / 600 |
| 1 | 592x592x24 | CTC 45% | Ø 160x400 / 9 | 3,1 | 180 | Ø 140x400 / 16 | 2,5 | 250 | 385 / 530 | 530 / 600 |
| 1 | 592x287x24 | CTC 45% | Ø 160x400 / 4 | 3,1 | 180 | Ø 140x400 / 7 | 2,5 | 250 | 385 / 530 | 530 / 600 |
| 2 | 592x592x24 | CTC 45% | Ø 160x400 / 9 | 3,1 | 180 | Ø 140x400 / 16 | 2,5 | 250 | 385 / 530 | 530 / 600 |
| 2 | 592x592x24 | CTC 45% | Ø 160x400 / 9 | 3,1 | 180 | Ø 140x400 / 16 | 2,5 | 250 | 385 / 530 | 530 / 600 |
| 1 | 592x287x24 | CTC 45% | Ø 160x400 / 4 | 3,1 | 180 | Ø 140x400 / 7 | 2,5 | 250 | 385 / 530 | 530 / 600 |
| 2 | 592x592x24 | CTC 45% | Ø 160x400 / 9 | 3,1 | 180 | Ø 140x400 / 16 | 2,5 | 250 | 385 / 530 | 530 / 600 |
| 2 | 592x287x24 | CTC 45% | Ø 160x400 / 4 | 3,1 | 180 | Ø 140x400 / 7 | 2,5 | 250 | 385 / 530 | 530 / 600 |
| 4 | 592x592x24 | CTC 45% | Ø 160x400 / 9 | 3,1 | 180 | Ø 140x400 / 16 | 2,5 | 250 | 385 / 530 | 530 / 600 |
| 6 | 592x592x24 | CTC 45% | Ø 160x400 / 9 | 3,1 | 180 | Ø 140x400 / 16 | 2,5 | 250 | 385 / 530 | 530 / 600 |

U SERIES

Modular air handling unit

UFIOC



Additional filter unit to be placed after the fan module (following air flow direction). Represents the most performant version of the UFC unit. Ideal in the catering and restaurant sector for the triple combined action of negative ionization, ozone and activated carbon, which eliminates any unpleasant odor from food cooking and vapors.

The unit contains:

- **Negative ionization stage.** It exploits the corona effect principle, whereby the fine particles passing through it become negatively charged and stick to surfaces, thus no longer remaining suspended in the air.
- **Ozone generator stage.** By recombining oxygen molecules, it creates ozone which, through oxidation-reduction, eliminates all odor-causing molecules, as well as viruses and molds. Furthermore, being placed before the activated carbon, the ozone is able to extend its lifespan.
- **Activated carbon cartridge stage.** It is capable of absorbing unpleasant odours from cooking food and vapours.

Ionizing cell (ion emission 5 million per cm³).

Ozone-generating cell (O₃ emissions 294 µg/m³).

F19C Filter (CTC 45%) 160 mm cartridges (3.1 kg activated carbon each) or on request 140 mm (2.5 kg activated carbon each).

QUICK SELECTION TABLE

| Model/Flow rate | Ionizing cell | | | Ozone-generating cell | | |
|-------------------|---------------|------------|-------------------------|-----------------------|------------|-------------------|
| | Quantity | Dimensions | Emission ion | Quantity | Dimensions | Emission ozone |
| m ³ /h | N. | mm | million/cm ³ | N. | mm | µg/m ³ |
| 3000 | 1 | 592x592x95 | 5 | 1 | 592x592x95 | 196 |
| 4500 | 1 | 592x592x95 | 5 | 1 | 592x592x95 | 196 |
| | 1 | 592x287x95 | 5 | 1 | 592x287x95 | 196 |
| 6000 | 2 | 592x592x95 | 5 | 2 | 592x592x95 | 196 |
| | 2 | 592x592x95 | 5 | 2 | 592x592x95 | 196 |
| 7500 | 1 | 592x287x95 | 5 | 1 | 592x287x95 | 196 |
| | 2 | 592x592x95 | 5 | 2 | 592x592x95 | 196 |
| 9000 | 2 | 592x287x95 | 5 | 2 | 592x287x95 | 196 |
| | 2 | 592x592x95 | 5 | 2 | 592x592x95 | 196 |
| 12000 | 4 | 592x592x95 | 5 | 4 | 592x592x95 | 196 |
| 18000 | 6 | 592x592x95 | 5 | 6 | 592x592x95 | 196 |

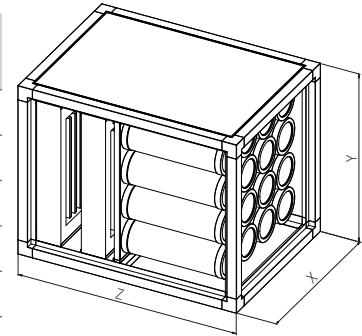


Ventilation

Comfort and performance
at maximum efficiency
energy

DIMENSIONS

| Size | Type box | Wt. kg | X mm | Y mm | Z mm |
|-------|----------|--------|------|------|------|
| 3000 | 1 | 92 | 655 | 715 | 900 |
| 4500 | 1 | 120 | 945 | 715 | 1000 |
| 6000 | 1 | 170 | 1250 | 715 | 1000 |
| 7500 | 1 | 200 | 1540 | 715 | 1000 |
| 9000 | 1 | 250 | 1250 | 1005 | 1000 |
| 12000 | 1 | 286 | 1250 | 1310 | 1000 |
| 18000 | 1 | 440 | 1845 | 1310 | 1000 |



| F19 C | | | | | | | | |
|----------|------------------|------------|-------------------|---------------|---------------|-------------------|---------------|---------------|
| Quantity | Plate size mm | Efficiency | 160 mm cartridges | | | 140 mm cartridges | | |
| | | | Cartridges | Carbon active | Pressure load | Cartridges | Carbon active | Pressure load |
| | | | mm / N. | kg | Pa | mm / N. | kg | Pa |
| 1 | 592x592x24 | CTC 45% | Ø 160x400 / 9 | 3,1 | 180 | Ø 140x400 / 16 | 2,5 | 250 |
| 1 | 592x592x24 | CTC 45% | Ø 160x400 / 9 | 3,1 | 180 | Ø 140x400 / 16 | 2,5 | 250 |
| 1 | 592x287x24 | CTC 45% | Ø 160x400 / 4 | 3,1 | 180 | Ø 140x400 / 7 | 2,5 | 250 |
| 2 | 592x592x24 | CTC 45% | Ø 160x400 / 9 | 3,1 | 180 | Ø 140x400 / 16 | 2,5 | 250 |
| 2 | 592x592x24 | CTC 45% | Ø 160x400 / 9 | 3,1 | 180 | Ø 140x400 / 16 | 2,5 | 250 |
| 1 | 592x287x24 | CTC 45% | Ø 160x400 / 4 | 3,1 | 180 | Ø 140x400 / 7 | 2,5 | 250 |
| 2 | 592x592x24 | CTC 45% | Ø 160x400 / 9 | 3,1 | 180 | Ø 140x400 / 16 | 2,5 | 250 |
| 2 | 592x287x24 | CTC 45% | Ø 160x400 / 4 | 3,1 | 180 | Ø 140x400 / 7 | 2,5 | 250 |
| 4 | 592x592x24 | CTC 45% | Ø 160x400 / 9 | 3,1 | 180 | Ø 140x400 / 16 | 2,5 | 250 |
| 6 | 592x592x24 | CTC 45% | Ø 160x400 / 9 | 3,1 | 180 | Ø 140x400 / 16 | 2,5 | 250 |