

AFPM

Panel-mounted axial fan with "UNEL MEC" motor



Product AFPM
Installation Wall-mounted

FEATURES

AFPM series axial fans are ideal for applications requiring substantial air flow rates and moderate pressures, in wall or panel mounting applications. They consist of an impeller featuring a robust die-cast aluminium clamp hub for fixing of the blades, manufactured by stamping from various materials, always with the objective of withstanding high workloads. The motor is built following international standards, thus guaranteeing reliability and - in the long term - an economical fan recovery, by simply repairing or replacing the motor itself.

FAN

Square-frame inlet cone with wide suction range in corrosion-resistant or weather-protected material. Motor support and safety guard mesh on the motor side in steel wire, protected against atmospheric agents, manufactured in compliance with UNI EN ISO 12499 standard. High-efficiency impeller with airfoil profile blades, with adjustable pitch angle at standstill in technopolymer and die-cast aluminium hub. Balancing according to UNI ISO 21940-11 standards.

MOTOR

AC asynchronous electric motor, three-phase or single-phase, IP 55 protection, insulation class F, duty S1, form B5, manufactured in compliance with IEC/EEC (UNEL-MEC) standards. Execution 5 (direct coupling with overhung impeller).

ON REQUEST

Versions with impeller having die-cast aluminium blades.
ATEX versions.
Versions with airflow from impeller to motor, position B (FGM).
Gravity closure damper (SG).
Impeller-side safety guard (PG-P) (Required for free inlet use).

APPLICATIONS

Ventilation of factories, car parks, farms, cooling of electrical and refrigeration equipment, etc.

APPLICATIONS



PLANT VENTILATION



CAR PARKS



LIVESTOCK FARMS



COOLING OF ELECTRICAL EQUIPMENT, COLD ROOMS, ETC.

TECHNICAL CHARACTERISTICS

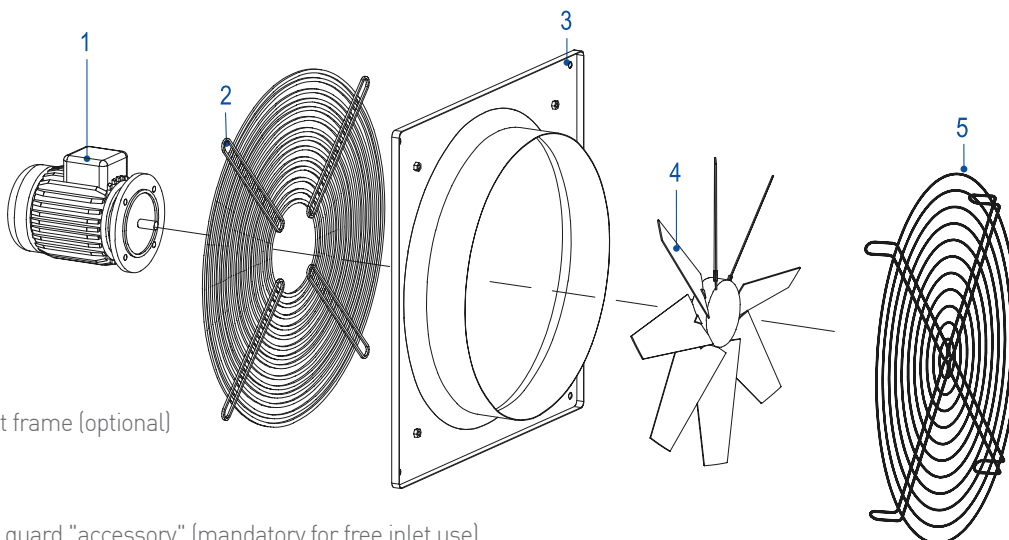
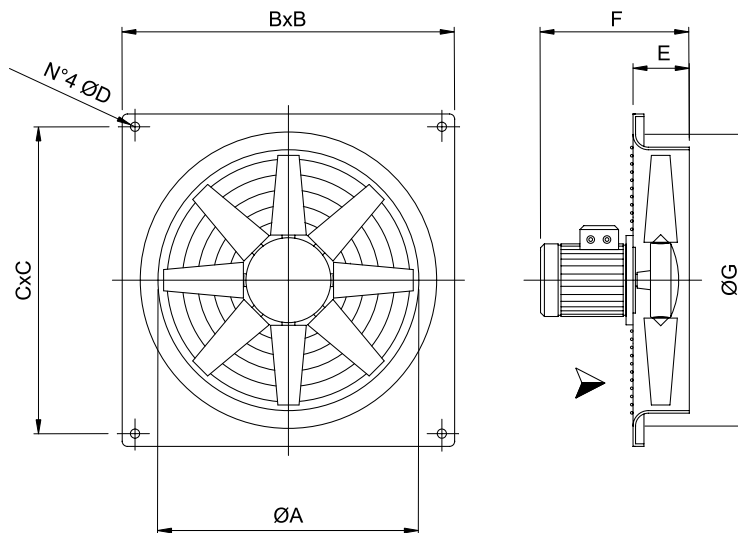
Ducted air	Clean or slightly dusty, non-abrasive
Conveyed air temperature	-20°C / +50°C
Supply voltage	Three-phase version (T) 400V-3Ph-50Hz
	Single-phase version (M) 230V-1Ph-50Hz
	Airflow from motor to impeller, position A (FMG)



DIMENSIONS

Model	ØA mm	BxB mm	CxC mm	ØD mm	E mm	F(*) mm	ØG mm	Weight(*) kg
25	260	340	300	10	90	270	315	6
31	310	390	350	10	110	320	365	7
35	360	440	400	10	110	320	410	8
40	410	500	450	10	110	320	465	9
45	460	560	510	10	110	340	510	13
50	510	650	580	10	110	360	570	18
56	570	700	630	10	130	380	630	22
63	640	800	730	12	130	400	700	25
71	710	850	800	12	130	460	770	33
80	810	950	900	12	180	460	900	46

(*) Indicative



- 1- Motor
- 2- Motor support frame (optional)
- 3- Panel
- 4- Impeller
- 5- Impeller-side guard "accessory" (mandatory for free inlet use)

AFPM

Panel-mounted axial fan with "UNEL MEC" motor

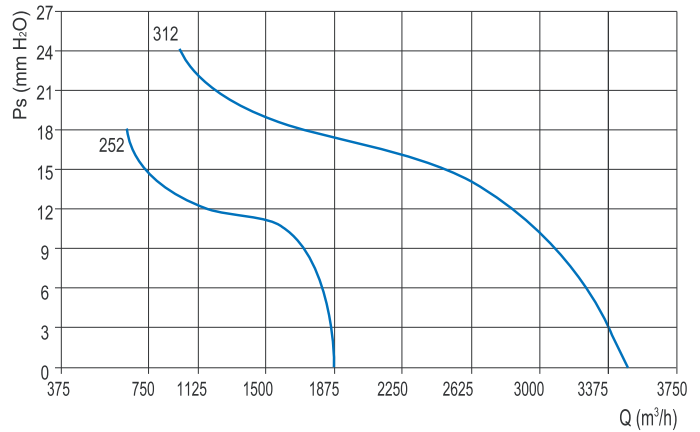
CHARACTERISTIC CURVES

2 POLES (3000 RPM) - SINGLE-PHASE (1PH-230V 50HZ)

Model	Flow rate (m³/h)	Pm kW	In max A	Motor (H)	Lp dB(A)
252 M	1850	0,09	0,8	56	64
312 M	3500	0,25	1,7	63	70

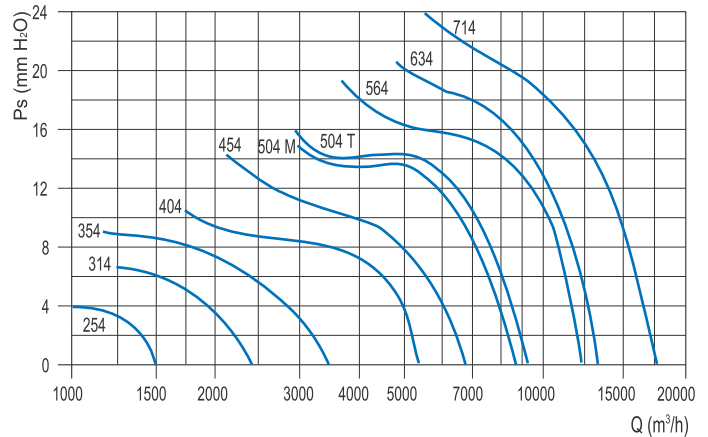
2 POLES (3000 RPM) - THREE-PHASE (3PH-400V 50HZ)

Model	Flow rate (m³/h)	Pm kW	In max A	Motor (H)	Lp dB(A)
252 T	1850	0,09	0,4	56	64
312 T	3500	0,25	0,7	63	70



4 POLES (1500 RPM) - SINGLE-PHASE (1PH-230V 50HZ)

Model	Flow rate (m³/h)	Pm kW	In max A	Motor (H)	Lp dB(A)
254 M	1400	0,06	0,4	56	47
314 M	2300	0,09	1	56	52
354 M	3200	0,09	1	63	57
404 M	5200	0,18	1,4	63	62
454 M	6800	0,25	1,8	71	66
504 M	8500	0,37	3,3	80	69



4 POLES (1500 RPM) - THREE-PHASE (3PH-400V 50HZ)

Model	Flow rate (m³/h)	Pm kW	In max A	Motor (H)	Lp dB(A)
254 T	1400	0,06	0,3	56	47
314 T	2300	0,09	0,4	56	52
354 T	3200	0,09	0,4	63	57
404 T	5200	0,18	0,6	63	62
454 T	6800	0,25	0,8	71	66
504 T	9500	0,55	1,6	80	69
564 T	12500	0,75	2	80	72
634 T	13500	0,75	2	80	76
714 T	17500	1,5	3,5	90	77

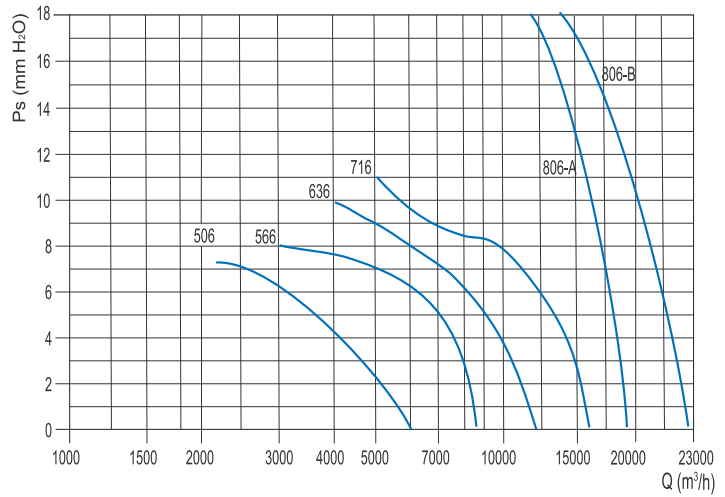


Ventilation

Comfort and performance
at maximum efficiency
energy

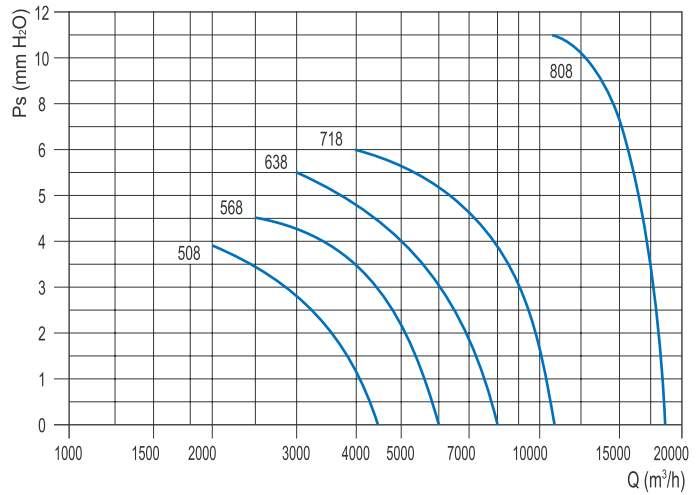
6 POLES (1000 RPM) - THREE-PHASE (3PH-400V 50HZ)

Model	Flow rate (m³/h)	Pm kW	In max A	Motor (H)	Lp dB(A)
506 T*	6000	0.18	0.7	71	59
566 T	8500	0.25	1	71	62
636 T	12000	0.37	1.3	80	66
716 T	16000	0.75	2.2	90	67
806/A T	19500	1.1	3	90	69
806/B T	23000	1.5	4	100	70



8 POLES (750 RPM) - THREE-PHASE (3PH-400V 50HZ)

Model	Flow rate (m³/h)	Pm kW	In max A	Motor (H)	Lp dB(A)
508 T	4500	0.08	0.6	71	52
568 T	6000	0.12	0.7	71	56
638 T*	8000	0.18	0.8	80	60
718 T*	11000	0.25	1.1	80	61
808 T*	18200	0.75	2.3	100	63

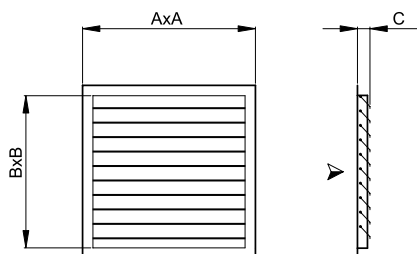


(*) Only for installation outside EU

AFPM

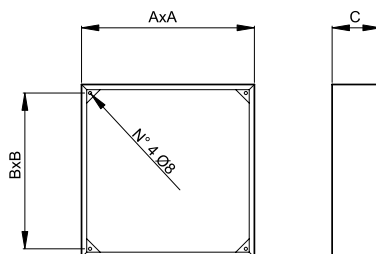
Panel-mounted axial fan with "UNEL MEC" motor

ACCESSORIES



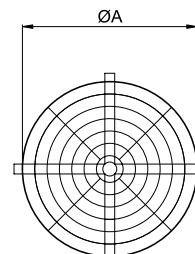
DAMPER

The damper blades open with the air movement when the fan is running and close by gravity when it is switched off, preventing heat loss, and the entry of rain, wind and birds. Made entirely of plastic material.



SPACER

These spacing flanges can be used to fix the damper to the fan when the wall or panel, on which it is to be mounted, has a thickness less than the depth of the inlet cone.



IMPELLER SIDE GUARD

Prevents intrusion from the impeller side by birds, rodents and accidental contact with the rotating impeller. Made of electro-welded steel wire, in compliance with safety regulations.

(Required for free inlet/outlet use)

Model	A	B	C	Kg
AFPM 25-31	370	300	35	0,6
AFPM 35	440	370	35	0,8
AFPM 40-45	510	440	35	1
AFPM 50	580	510	35	1,2
AFPM 56	650	580	35	1,6
AFPM 63	720	650	35	2,6
AFPM 71	785	715	35	3
AFPM 80	920	850	25	6,8

Model	A	B	C	Kg
AFPM 25	390	300	140	3
AFPM 31	390	350	140	3
AFPM 35	440	400	140	3,5
AFPM 40	510	450	140	4
AFPM 45	560	510	140	4,5
AFPM 50	630	580	140	5
AFPM 56	700	630	140	5,5
AFPM 63	790	730	140	6
AFPM 71	840	800	140	6,5
AFPM 80	940	900	200	9

Model	A	Kg
AFPM 25	260	0,4
AFPM 31	320	0,6
AFPM 35	360	0,7
AFPM 40	410	0,9
AFPM 45	460	1
AFPM 50	510	1,3
AFPM 56	570	1,5
AFPM 63	640	1,8
AFPM 71	720	2,5
AFPM 80	820	3