

AFPS

Axial panel fan with compact motor



Product AFPS
Installation Wall-mounted

FEATURES

AFPM series axial fans are ideal for applications requiring substantial air flow rates and moderate pressures, in wall or panel mounting applications. They are characterized by extreme compactness, thanks to the minimal motor protrusion, and by the perfect speed regulation capability, without producing noise (electrical hum) or abnormal current absorption. This is possible thanks to a compact motor, without its own ventilation, designed exclusively for use in axial fans.

FAN

Square-frame inlet cone with wide suction range in corrosion-resistant or weather-protected material. Motor support and safety guard mesh on the motor side in steel wire, protected against atmospheric agents, manufactured in compliance with UNI EN ISO 12499 standard. High-efficiency impeller with airfoil profile blades, with adjustable pitch angle at standstill in technopolymer and die-cast aluminum hub. Balancing according to UNI ISO 21940-11 standards.

MOTOR

AC asynchronous electric motor, three-phase or single-phase with thermal protection, variable speed, IP 55 protection, insulation class F, duty S1. Execution 5 (direct coupling with overhung impeller).

ON REQUEST

Versions with impeller having die-cast aluminium blades.
Versions with airflow from impeller to motor, position B (FGM).
Gravity closure damper (SG).
Impeller-side safety guard (PG-P) (Required for free inlet use).

APPLICATIONS

Ventilation of factories, car parks, farms, cooling of electrical and refrigeration equipment, etc.

APPLICATIONS



PLANT VENTILATION



CAR PARKS



LIVESTOCK FARMS



COOLING OF ELECTRICAL EQUIPMENT, COLD ROOMS, ETC.

TECHNICAL CHARACTERISTICS

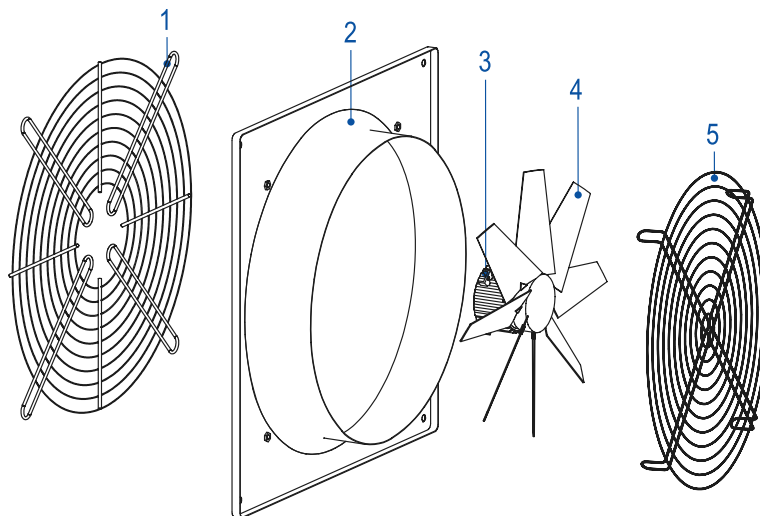
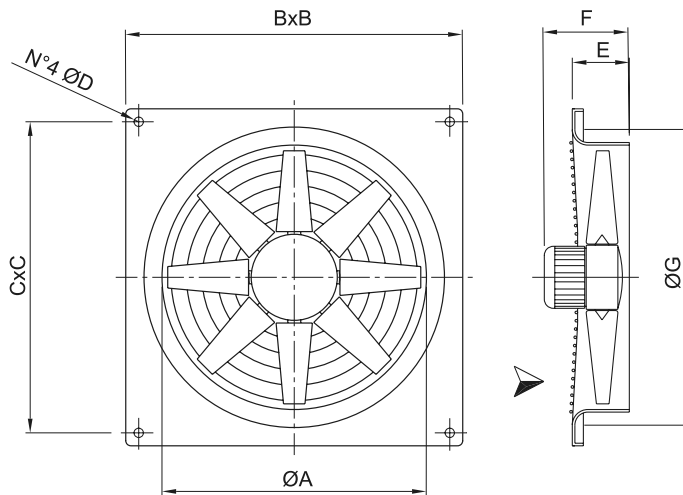
Ducted air	Clean or slightly dusty, non-abrasive
Conveyed air temperature	-20°C / +50°C
Supply voltage	Three-phase version (T) 400V-3Ph-50Hz
	Single-phase version (M) 230V-1Ph-50Hz
	Airflow from motor to impeller, position A (FMG)



DIMENSIONS

Model	ØA mm	BxB mm	CxC mm	ØD mm	E mm	F(*) mm	ØG mm	Weight(*) kg
31	310	390	350	10	110	170	365	7
35	360	440	400	10	110	170	410	7
40	410	500	450	10	110	170	465	9
45	460	560	510	10	110	175	510	10
50	510	650	580	10	110	175	570	12
56	570	700	630	10	130	210	630	18
63	640	800	730	12	130	210	700	20
71	710	850	800	12	130	220	770	26

(*) Indicative



- 1- Motor support frame (optional)
- 2- Panel
- 3- Motor
- 4- Impeller
- 5- Impeller-side guard "accessory" (mandatory for free inlet use)

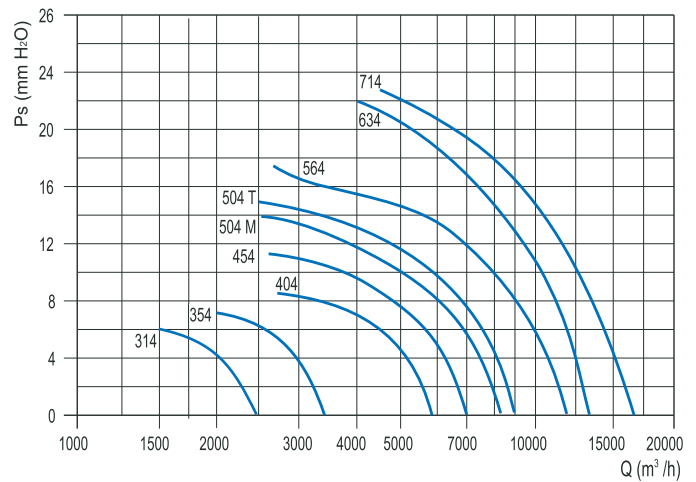
AFPS

Axial panel fan with compact motor

CHARACTERISTIC CURVES

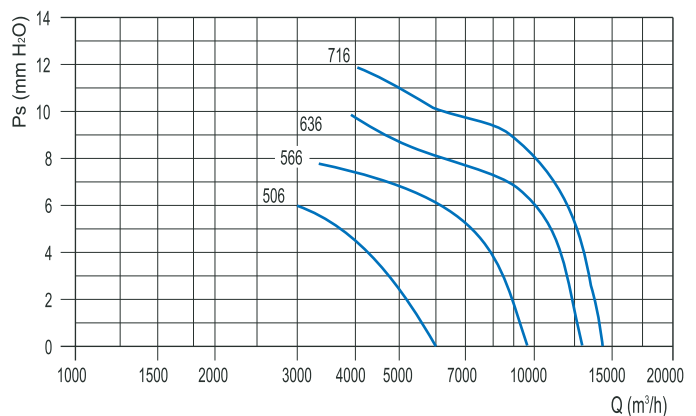
4 POLES (1400 RPM) - SINGLE-PHASE (1PH-230V 50HZ)

Model	Flow rate (m³/h)	Pm kW	In max A	Lp dB(A)
314 M	2300	0,09	0,8	52
354 M	3500	0,09	0,8	57
404 M	6000	0,18	1,7	62
454 M	7000	0,25	2,2	66
504 M	8500	0,25	2,3	69
564 M	11500	0,55	3,8	72
634 T	13500	0,75	2	76
714 T	17500	1,5	3,5	77



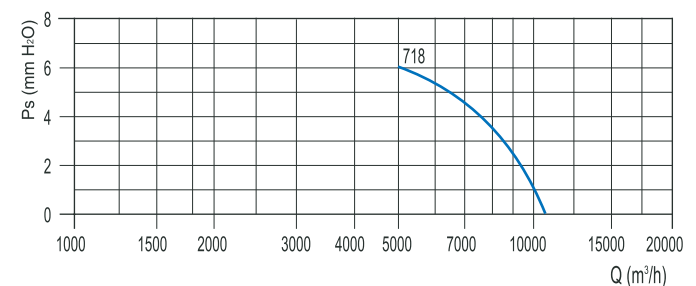
4 POLES (1400 RPM) - THREE-PHASE (3PH-400V 50HZ)

Model	Flow rate (m³/h)	Pm kW	In max A	Lp dB(A)
314 T	2300	0,09	0,5	52
354 T	3500	0,09	0,5	57
404 T	6000	0,18	0,75	62
454 T	7000	0,25	1,1	66
504 T	9000	0,35	1,5	69
564 T	11500	0,55	1,6	72
634 T	13500	0,74	2,2	76
714 T	17000	1,1	2,6	77



6 POLES (900 RPM) - THREE-PHASE (3PH-400V 50HZ)

Model	Flow rate (m³/h)	Pm kW	In max A	Lp dB(A)
506 T*	6000	0,18	0,8	58
566 T	9500	0,25	1,2	62
636 T	13000	0,55	1,7	66
716 T	14500	0,55	1,7	67



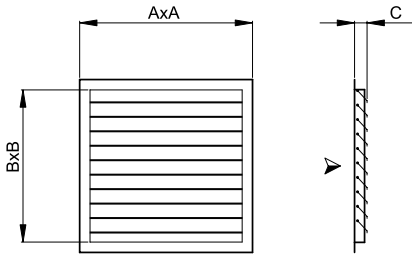
8 POLES (700 RPM) - THREE-PHASE (3PH-400V 50HZ)

Model	Flow rate (m³/h)	Pm kW	In max A	Lp dB(A)
718 T*	10500	0,28	1,3	60

(*) Only for installation outside EU

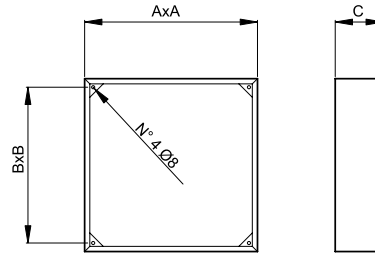


ACCESSORIES



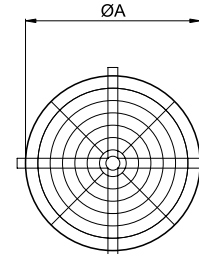
DAMPER

The damper blades open with the air movement when the fan is running and close by gravity when it is switched off, preventing heat loss, and the entry of rain, wind and birds. Made entirely of plastic material.



SPACER

These spacing flanges can be used to fix the damper to the fan when the wall or panel, on which it is to be mounted, has a thickness less than the depth of the inlet cone.



IMPELLER SIDE GUARD

Prevents intrusion from the impeller side by birds, rodents and accidental contact with the rotating impeller. Made of electro-welded steel wire, in compliance with safety regulations. (Required for open inlet operation).

Model	A	B	C	Kg
AFPS 25-31	370	300	35	0,6
AFPS 35	440	370	35	0,8
AFPS 40-45	510	440	35	1
AFPS 50	580	510	35	1,2
AFPS 56	650	580	35	1,6
AFPS 63	720	650	35	2,6
AFPS 71	785	715	35	3
AFPS 80	920	850	25	6,8

Model	A	B	C	Kg
AFPS 25	390	300	140	3
AFPS 31	390	350	140	3
AFPS 35	440	400	140	3,5
AFPS 40	510	450	140	4
AFPS 45	560	510	140	4,5
AFPS 50	630	580	140	5
AFPS 56	700	630	140	5,5
AFPS 63	790	730	140	6
AFPS 71	840	800	140	6,5
AFPS 80	940	900	200	9

Model	A	Kg
AFPS 25	260	0,4
AFPS 31	320	0,6
AFPS 35	360	0,7
AFPS 40	410	0,9
AFPS 45	460	1
AFPS 50	510	1,3
AFPS 56	570	1,5
AFPS 63	640	1,8
AFPS 71	720	2,5
AFPS 80	820	3