

BVI

Super silenced inline centrifugal fan box



Product

BVI

Application

Civil applications

Construction

galvanized sheet metal box with panels lined with sound-absorbing material

FEATURES

The SILENT BOX series consists of carefully soundproofed ventilation box units. The range comprises 7 models with port diameters from 125 to 400 mm. The high thickness of the high-density sound-absorbing lining containing the fan, the minimal height of the plenum, the adjustable motor speed, are characteristics that make the SILENT BOX indispensable in installations where compact dimensions or low noise levels are required.

FAN

Galvanized sheet metal containment housing with walls insulated with high-density sound-absorbing material, 50 mm thick. Circular duct connection ports. Openable panel for fan access. Double-inlet centrifugal fan with forward curved blade impeller.

MOTOR

Single-phase electric motor, IP44 or IP20, cl. B, with thermal protection, electronically adjustable speed.

APPLICATIONS

Ideal for extracting or supplying air through circular ducts in environments such as: public premises, offices, shops, bars, gyms, workshops, bathrooms, garages, restaurants.

APPLICATIONS



PUBLIC PREMISES



OFFICES



SHOPS



BAR



GYMS



LABORATORIES



BATHROOMS



WORKSHOPS



RESTAURANTS

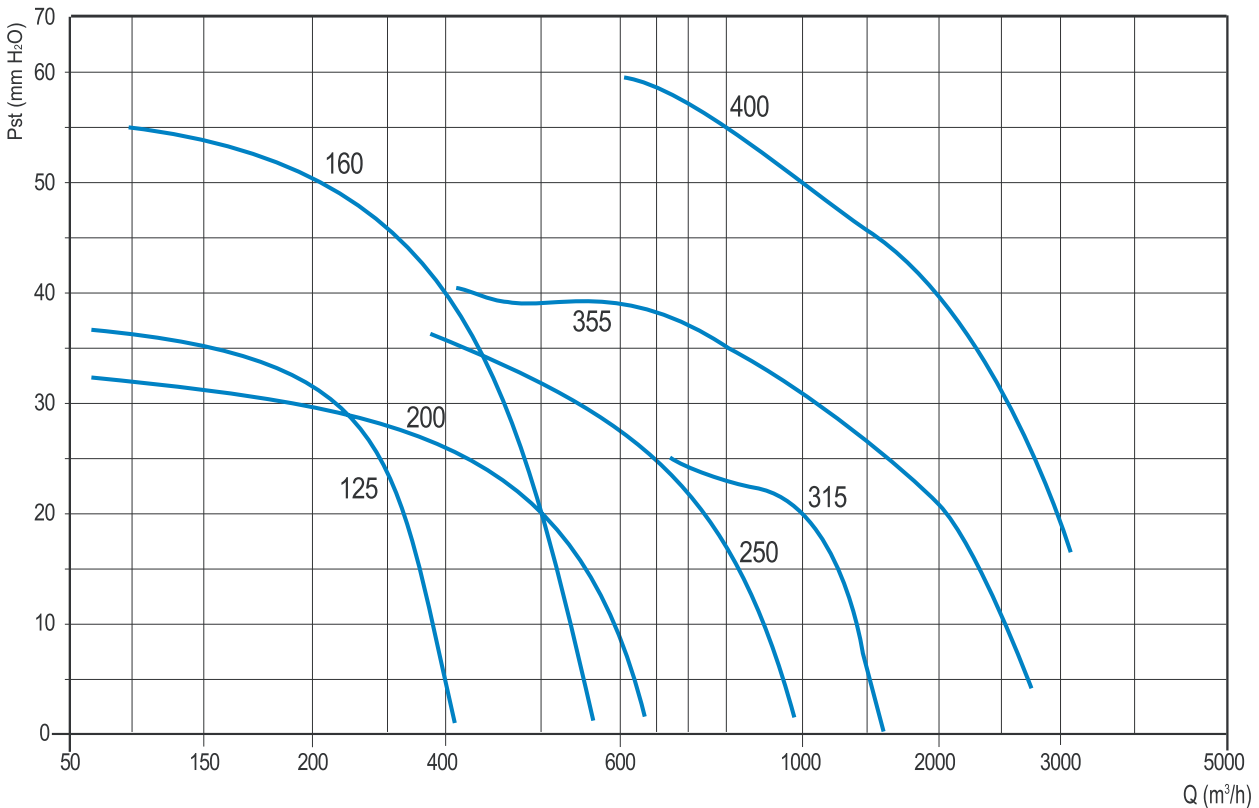
TECHNICAL CHARACTERISTICS

Ducted air	Clean
Air temperature	-20°C/+40°C
Supply voltage	single-phase 230V-1ph-50Hz



CHARACTERISTIC CURVES

BVI



All ventilation units, in accordance with European Regulation 1253/14, must be driven by a speed controller depending on the type of electric motor. The speed controller specification is indicated in the documentation of the ventilation unit itself.

Tolerances: aeraulic performance and noise levels are within the tolerances specified in DIN 24166 standard, Class 2. In case of installation in the EU, use only for extraction in environments NOT exclusively occupied by people (e.g.: professional kitchens, industrial and agricultural applications, machinery, data centers, etc.)

* Only for installation outside EU

QUICK SELECTION TABLE

Model	RPM	Pm (W)	In max (A)	Lp dB(A)
125 M	2480	120	0,5	27
160 M*	2647	270	1,2	33
200 M*	1550	160	0,7	29
250 M*	2082	265	1,1	35
315 M	1400	147	1,2	42
355 M	1400	420	3,7	46
400 M	1400	550	5	50

Model: single-phase (230V 50Hz)

Rpm= Rated motor speed

Pm= Motor power

In= Absorbed current

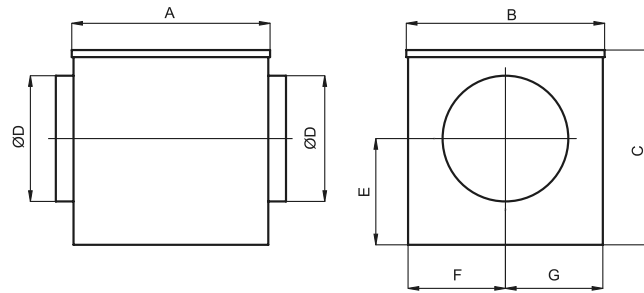
Lp=Sound pressure level in free field at 3 m from the fan with ducted openings.

BVI

Super silenced inline centrifugal fan box

DIMENSIONS

Model	A mm	B mm	C mm	D mm	E mm	F mm	G mm	Kg
125	400	410	300	125	171	277	133	14
160	400	410	300	160	142	148	262	15
200	444	444	420	200	251	222	222	18
250	444	444	420	250	221	222	222	19
315	550	550	550	315	300	275	275	39
355	550	550	550	355	300	275	275	41
400	650	650	650	400	380	325	325	60



- 1- Protection guard (accessory) - Mandatory for free inlet use
- 2- Non-return butterfly damper
- 3- Box casing
- 4- Fixing collar
- 5- Fan
- 6- Closing cover
- 7- Speed controller

