

KCFC

Circular section ductable inline extractor



Product

KCFC

Application

Civil applications

Construction

Casing: painted galvanized sheet metal RAL 7035

Impeller: plastic and metal

SPECIFICATIONS

Circular section inline duct extractor for extraction and supply of clean air up to 1170 m³/h at low pressures.

The circular cross-section with inline flow simplifies installation in existing circuits or new installations with rigid or flexible circular ducts at inlet and outlet.

Structure made entirely of turned aluminum alloy sheet in two parts joined together by exposed screws. Inside the structure, flow straighteners are present that reduce fluid turbulence and limit straight duct lengths. On the outside of the casing, the junction box is located from which all electrical connections can be made.

FAN

Backward curved centrifugal impeller, made of plastic and metal, directly coupled to the external rotor motor, dynamically balanced on two planes according to G6.3 DIN ISO standard.

Scroll housing in galvanized sheet metal painted light grey RAL 7035, also suitable for exposed installations.

Horizontal or vertical mounting. Integrated mounting bracket for easy installation of the fan unit.

Can be used for both supply and return.

MOTOR

IP33 protection motor with insulation class F and external rotor. Only single-phase 230 V, 50 Hz power supply is available.

Thermal protection with automatic reset, ball bearings. A built-in thermostat switch protects the motor from overload and automatically restarts the fan unit after internal temperature dissipation.

Min. fluid temp. = -20 °C.

Max. fluid temp. = +60 °C.

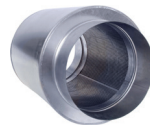
ACCESSORIES



Circular overpressure damper



Speed controller
single-phase



Circular silencer without nose
cone, bayonet connection

All images are only indicative of the product type and may differ from the actual article.

APPLICATIONS



CIVIL VENTILATION



FAST FOOD



CANTEENS



RESTAURANTS



GARAGE

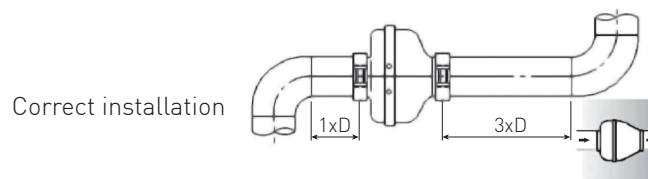
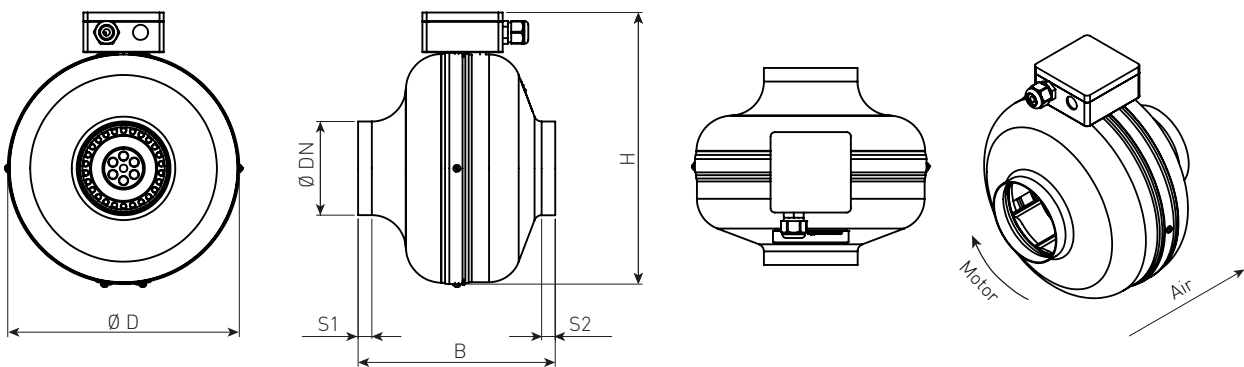


TECHNICAL FEATURES - OPERATING RANGE

Operating range	Flow rate (m ³ /h)	From 20 to 1,170
	Pressure (Pa)	Up to 600
Min. outlet	mm	100
Max. outlet	mm	315
Motor	Volt (±10%)	230 V
	Poles	2-4
	IP	33
Fluid temp min. limit	°C	-20
Fluid max. temp limit	°C	60

DIMENSIONS

KCFC Model	Ø DN	Ø D	Dimensions (mm)			
			B	H	S1	S2
100L	99	245	209	287	15	14,4
125L	124	245	194	287	15	14,4
150	149	270	191	312	15	20
160	159	270	205	310	20	21
200L	199	344	243,5	386	20	30
200	199	344	243,5	386	20	30
250L	249	344	243	386	30	36
250	249	344	243	386	30	36
315	314	402	253,5	444	27	40



KCFC

QUICK SELECTION TABLE

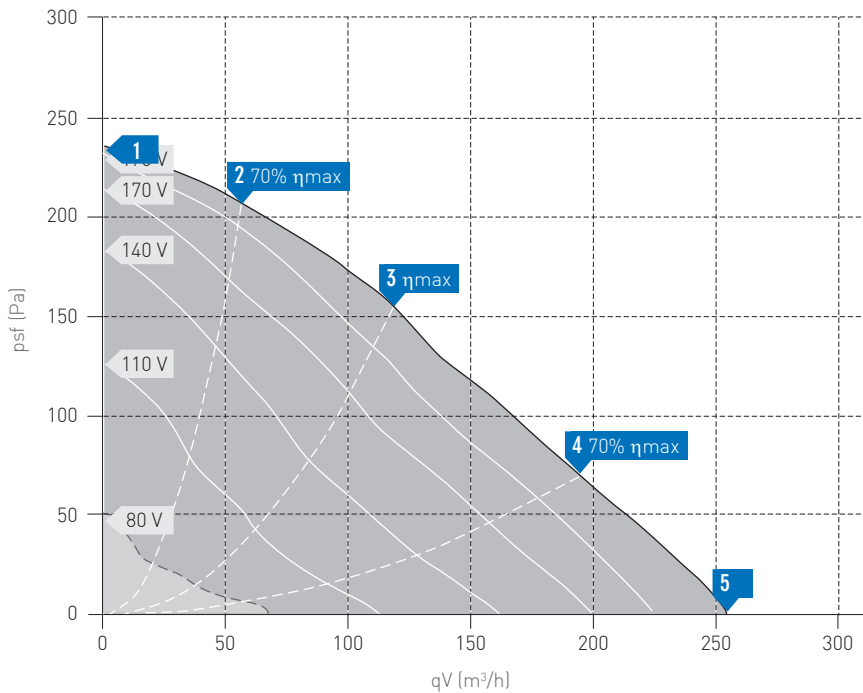
KCFC	Max. flow rate	Speed	Power supply	I max.	Installed power	Degree protection	Sound power
Model	m ³ /h	RPM	Volt/Hz	A	W		dB
100L	250	2390	230/50	0,23	28	IP 33	59
125L	300	2400	230/50	0,23	28	IP 33	-
150	440	2420	230/50	0,30	48	IP 33	62
160	460	2300	230/50	0,30	49	IP 33	62
200L	1040	2710	230/50	0,90	154	IP 33	70
200	810	2450	230/50	0,50	100	IP 33	71
250L	1090	2700	230/50	0,90	161	IP 33	68
250	890	2420	230/50	0,50	100	IP 33	71
315	1170	2700	230/50	0,90	162	IP 33	68

CHARACTERISTIC CURVES

Q= Flow rate expressed in m³/h, m³/s and cfm

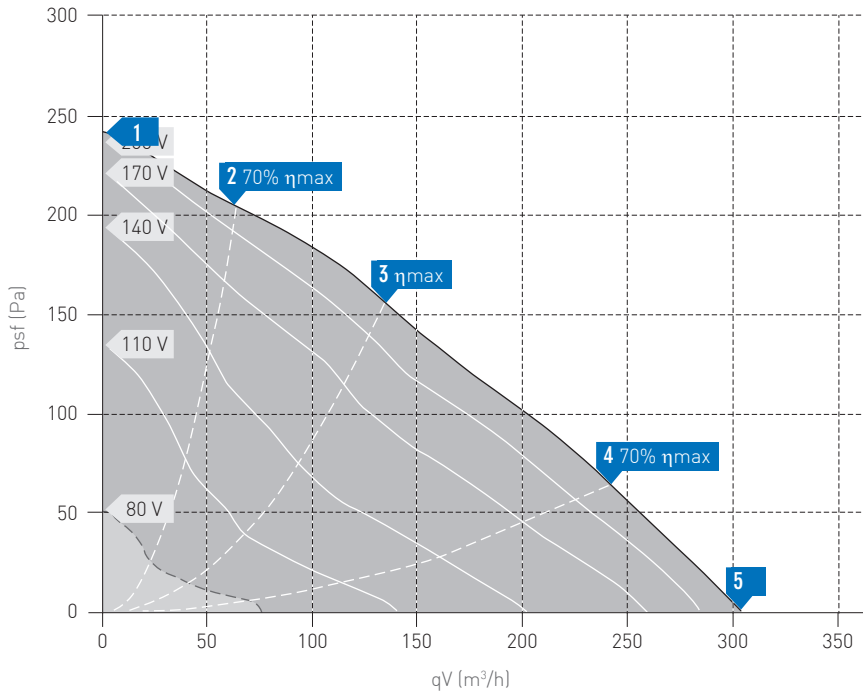
Pe= Static pressure expressed in mm W.G., Pa and in wg

KCFC 100L

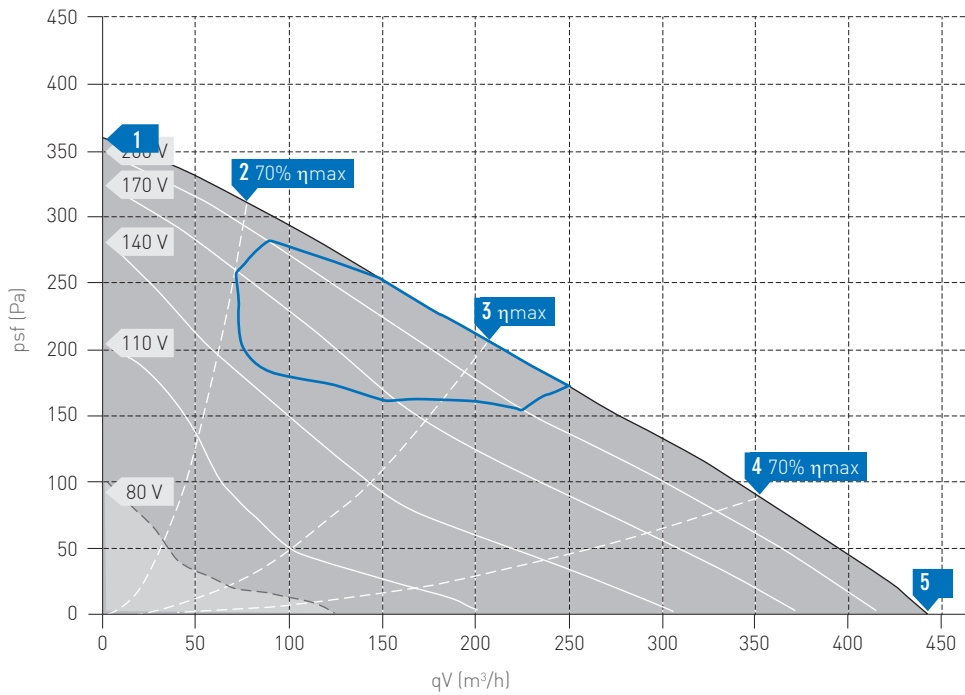




KCFC 125L



KCFC 150



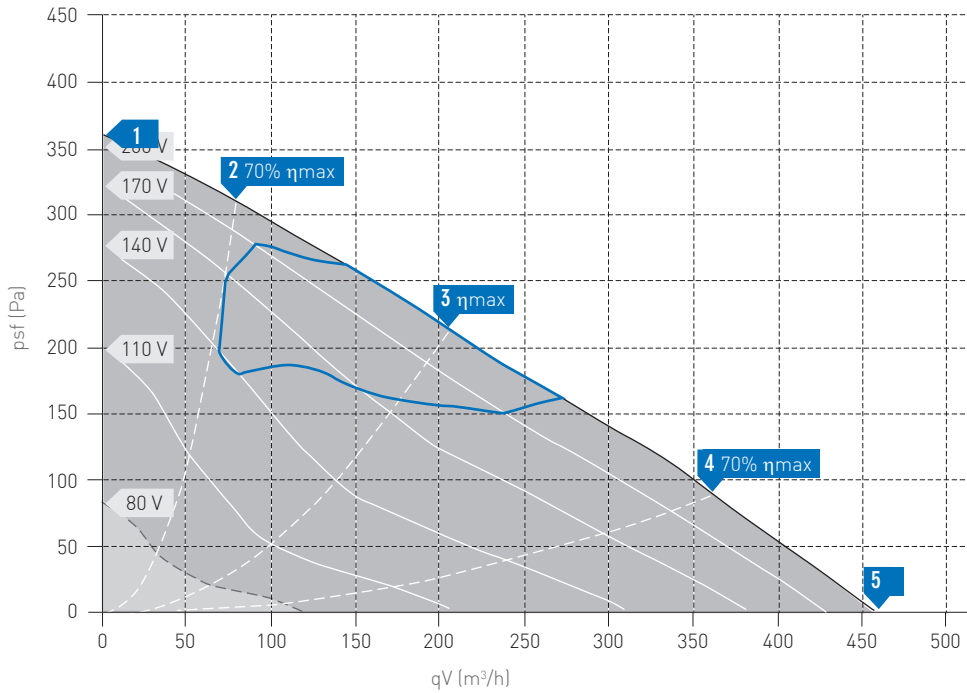
Q= Flow rate expressed in m³/h, m³/s and cfm

Pe= Static pressure expressed in mm W.G., Pa and in wg

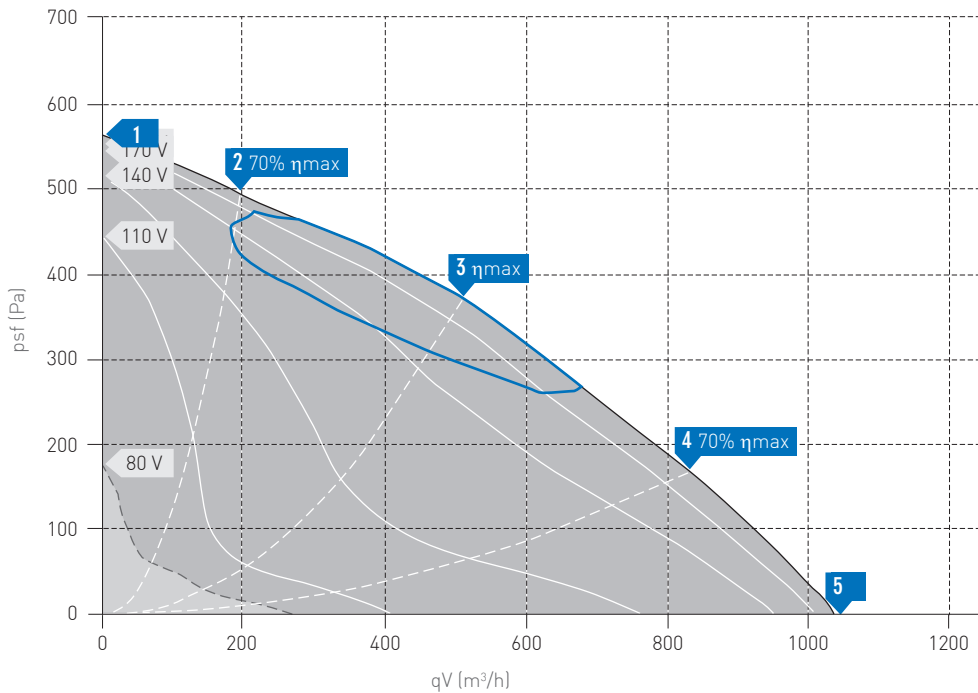
KCFC

Circular section ductable inline extractor

KCFC 160



KCFC 200L



Q= Flow rate expressed in m³/h, m³/s and cfm

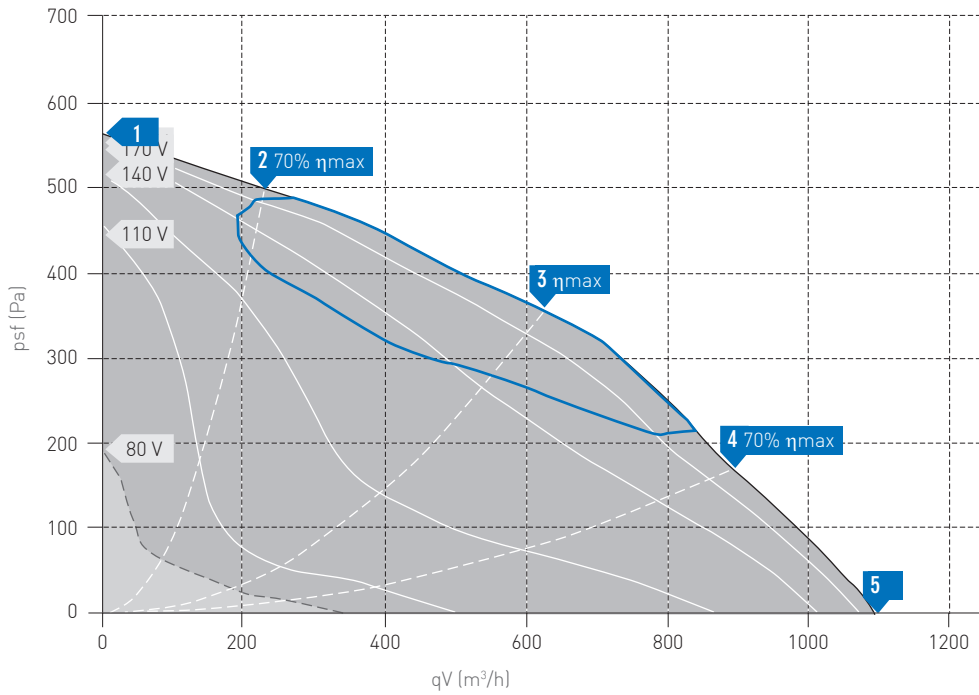
Pe= Static pressure expressed in mm W.G., Pa and in wg



Ventilation

Comfort and performance
at maximum efficiency
energy

KCFC 250L



KCFC 315

