

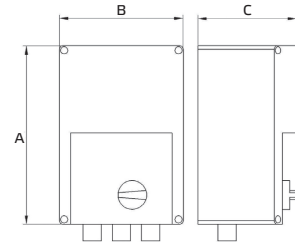
Transformer TEM

For single-phase motors



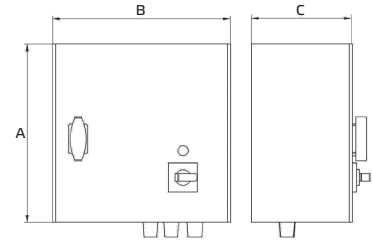
**Product
Detail**

TEM 1 Transformer
Plastic housing



**Product
Detail**

TEM 2 Transformer
Metal housing



FEATURES

- 230V 50/60 Hz
- With motor protection
- With contact for gas solenoid valve
- Wall mounting
- Maximum ambient temperature 35°C
- Protection class IP 54

TECHNICAL CHARACTERISTICS AND DIMENSIONS

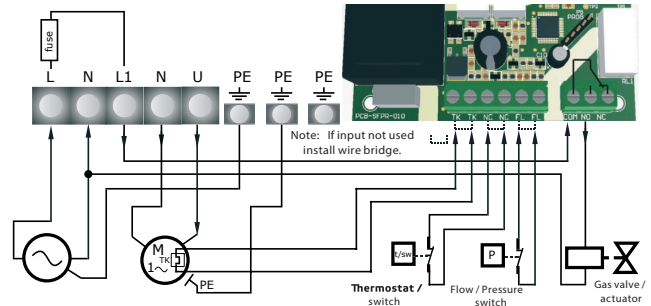
Type	I _{max} A	Fuse A	A mm	B mm	C mm	D mm	E mm	Wt. Kg
TEM 035G	3,5	5,0	305	200	140	183	236	5,1
TEM 050G	5,0	8,0	305	200	140	183	236	5,7
TEM 075G	7,5	12,5	305	200	140	183	236	7,9
TEM 100G	10,0	16,0	325	300	185	255	255	12,6
TEM 130G	13,0	18,0	325	300	185	255	255	15,2

Type	Output voltage U _A V				
	1	2	3	4	5
TEM 035G	110	140	170	200	230
TEM 050G	110	140	170	200	230
TEM 075G	110	140	170	200	230
TEM 100G	110	140	170	200	230
TEM 130G	110	140	170	200	230

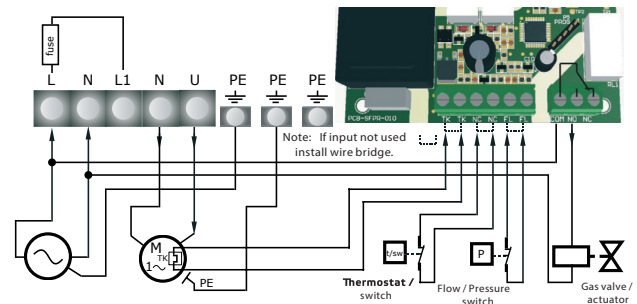


WIRING DIAGRAMS

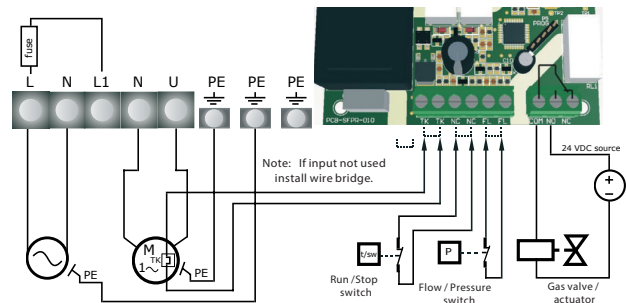
1a.
230 VAC valve/actuator powered from terminals with internal protection fuse



1b.
230 VAC valve/actuator powered from terminals without separate internal protection fuse



1c.
Valve/actuator powered by an external 24 VDC power supply



WIRING AND CONNECTIONS

L, N	Supply voltage 230VAC \pm 10 % - 50 / 60 Hz
PE	Earth terminal
Outputs	
L1, N	Unregulated output, 230 VAC / 2 A
N, U	Regulated output to motor (0 / 110 / 140 / 170 / 200 / 230 VAC \pm 5 %)
PE	Earth terminal
COM, NO, NC	Changeover relay contacts, (230 VAC / 2 A)
Inputs	
TK, TK	Thermal contacts
NC, NC	Limit switch contact, normally closed
FL, FL	Cable gland clamping range
Connections	Cable cross-section: depends on the items

MOUNTING

